

Marsden, 6A Narianne Street

Comfortable Family Living Near Shops, Schools & Parks



For Lease
\$425

View
By Appointment

Rent to increase to \$475 from 18/02/2026

Nestled in a quiet, leafy street within walking distance to Marsden Park Shopping Centre, schools, and parks, this home is set on a private battle-axe block offering peace and privacy with friendly neighbours.

This property includes:

- * 3 spacious bedrooms with brand new carpet
- * Modern kitchen with gas cooking and hot water
- * Polished timber floors
- * A generous lounge room and adjoining dining area
- * Double carport

Disclaimer: We have in preparing this disclosure used our best endeavours to ensure that



LJ Hooker Shailer Park
(07) 3102 0829

Disclaimer: All information contained therein is gathered from relevant third parties sources. We cannot guarantee or give any warranty about the information provided. Interested parties must rely solely on their own enquiries.

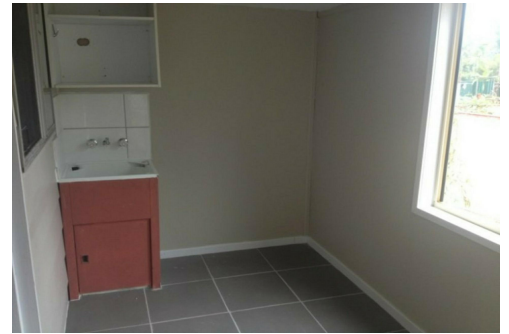
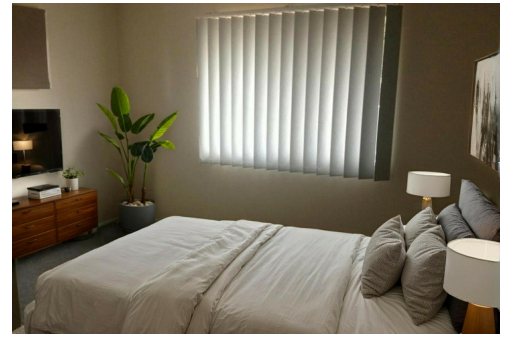
the information contained herein is true and accurate. No responsibility will be accepted for any and all liability in respect of errors, omissions, Photos, inaccuracies or misstatements. Tenants are responsible to carry out their own research.

Please note, we use LJ Hooker Assist for utility connections. This is a free service and you are not obliged to use them however they will contact you regarding your utility connections prior to the lease commencing. Should you not wish to use this service, just let them know when they contact you*

More About this Property

Property ID	683HVG
Property Type	House
Including	Deck Floorboards

LJ Hooker Shailer Park (07) 3102 0829
2/3 Mandew Street, SHAILER PARK QLD 4128
shailerpark.ljhooker.com.au | shailerpark@ljhooker.com.au



LJ Hooker Shailer Park
(07) 3102 0829

Disclaimer: All information contained therein is gathered from relevant third parties sources. We cannot guarantee or give any warranty about the information provided. Interested parties must rely solely on their own enquiries.