



Marryatville, 15 Hackett Terrace

Zoned for Marryatville High



Just moments from Norwood Parade and Burnside Village, and Marryatville High just on the other side of the fence, you have a host of quality schools, amenities, shops, restaurants and cafes on your doorstep.

Features include:

- *Fully enclosed front garden with remote controlled gate
- *Flexible floorplan
- *Floorboards throughout
- *Large lounge, 4th bedroom or work from home space
- *Light filled family room with wet bar, opening to entertaining area
- *Newly updated eat in kitchen with an abundance of storage
- *Kitchen with stone benchtops, plumbing for fridge, dishwasher and electric cooking with induction cooktop
- *3 large bedrooms, 2 with built in robes

For Lease
Please Call

View
ljhooker.com.au/2C14FDZ

Contact
Jackson Dodwell
0434 079 463
jackson.dodwell@ljhadelaidemetro.com.au



Disclaimer: All information contained therein is gathered from relevant third parties sources. We cannot guarantee or give any warranty about the information provided. Interested parties must rely solely on their own enquiries.

LJ Hooker St Peters
(08) 8362 8008

- *First bathroom features shower over bath, toilet and stone bench tops
- *2nd bathroom with shower, toilet and stone bench vanity
- *Internal laundry combined with bathroom
- *Covered deck for entertaining with ceiling fan
- *Ducted reverse cycle air conditioning
- *Single carport and single garage
- *Established gardens with trees and fruit trees
- *Solar system —4.8kW
- *NBN

Situated in highly sought-after Marryatville, this home is a proud member of the Marryatville Primary School and Marryatville High School catchment areas. The prestigious Pembroke School is just a short distance away, as are Norwood Parade, Burnside Village and the cafe culture, shops and restaurants of Adelaide City.

Water charges: Water usage and supply charges apply
 Furniture: Unfurnished
 Exclude: Fireplace & alarm

NOTE ABOUT THE OPEN INSPECTIONS: Interested persons MUST register their details to attend any of the scheduled viewing dates and times allocated. The agent will not attend the listed viewing date and time if you do not register and confirm your attendance. It is for this reason we highly recommend you register to attend to ensure the agent's attendance and to avoid disappointment.

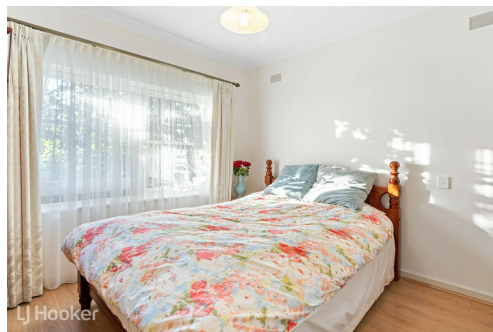
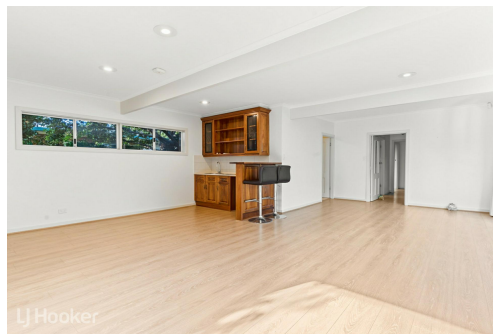
Disclaimer: All information provided has been obtained from sources we believe to be accurate, however, we cannot guarantee the information is accurate and we accept no liability for any errors or omissions. We encourage all interested parties to make their own enquiries, particularly regarding NBN/internet availability at the property.

More About this Property

Property ID	2C14FDZ
Property Type	House

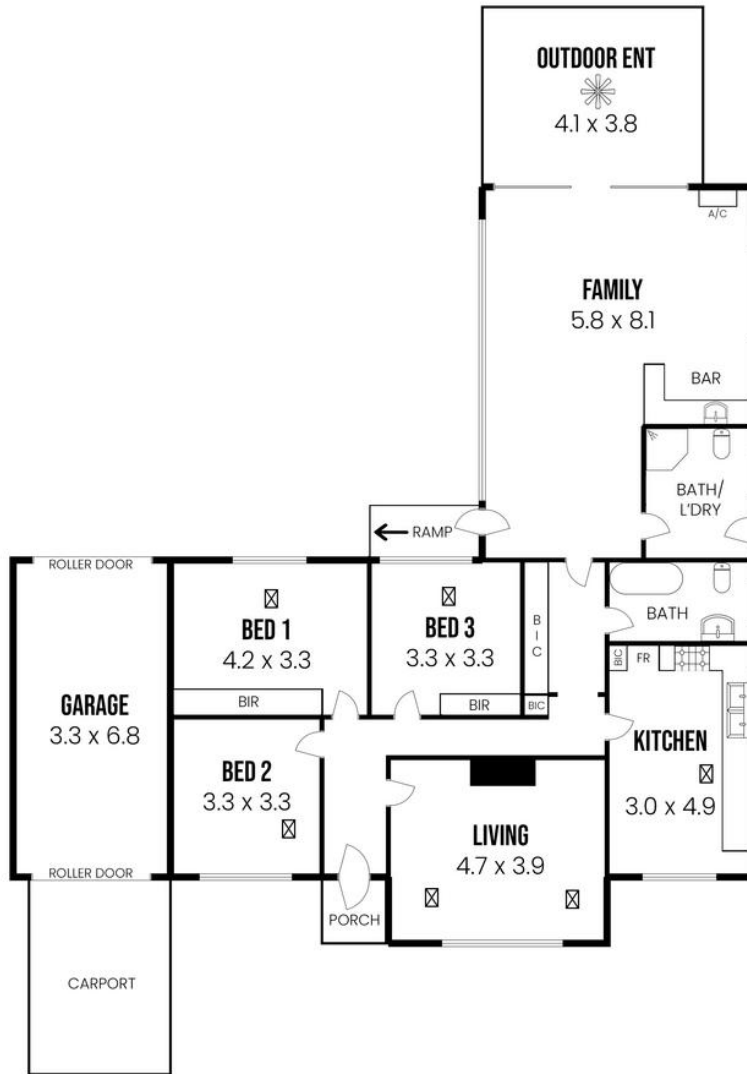
Jackson Dodwell 0434 079 463
 Residential Property Manager | jackson.dodwell@ljhadelaidemetro.com.au

LJ Hooker St Peters (08) 8362 8008
 2a Portrush Road, PAYNEHAM SA 5070
stpeters.ljhooker.com.au | stpeters@ljhadelaidemetro.com.au



Disclaimer: All information contained therein is gathered from relevant third parties sources. We cannot guarantee or give any warranty about the information provided. Interested parties must rely solely on their own enquiries.

LJ Hooker St Peters
(08) 8362 8008



15 Hackett Terrace, Marryatville, SA 5068

Disclaimer: The information & figures obtained within this document has been compiled from information provided by vendor & sources that we believe are reliable. No warranty is given to their accuracy & all figures are subject to change without notice.