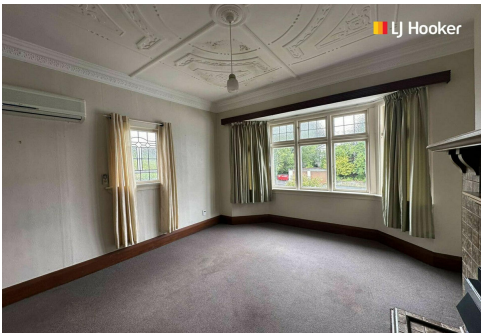


LEASED



Maori Hill, A/16 Passmore Crescent

Great Location & All Day Sun!

TO VIEW: Please register in Trademe under the property advertisement for the set viewing time and day.

This tidy one bedroom flat in Maori Hill is available to rent. In a great location and all day sun this home provides you with a spacious lounge with large wall mounted heat pump, good size kitchen and dining offering plenty of cupboard space, fridge/freezer and door out to private courtyard, large double bedroom with wardrobe, bathroom includes shower over bath, vanity, toilet and washing/dryer.

With a garage, close to the fabulous No 7 Balamac, Balamac golf course and easy commute to the university or town, this is a superb home for a couple or single person.

NB: The garage is suitable for car parking only or storage of bikes, kayaks etc



For Lease
Please Call

View
ljhooker.co.nz/3P97GDS

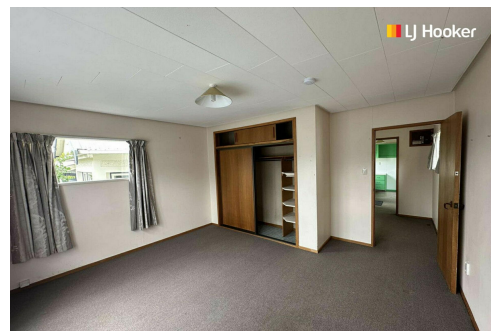
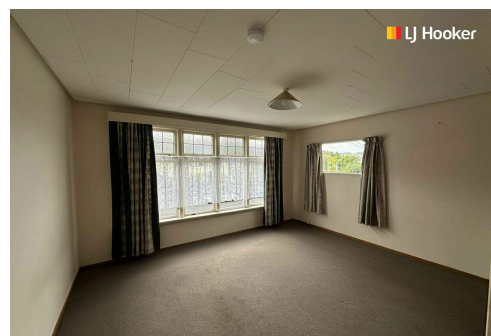
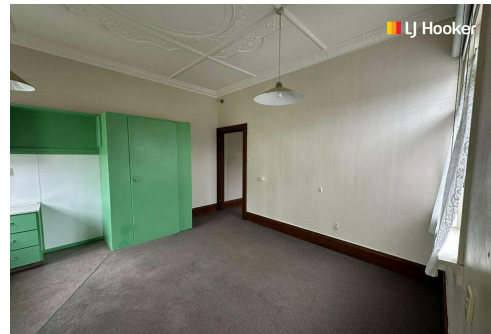
Contact
Nathan Dickson
027 214 7265
nathan@ljhdunedin.co.nz

More About this Property

Property ID	3P97GDS
Property Type	Flat
Licensed Real Estate Agents (REAA2008)	

Nathan Dickson 027 214 7265
Leasing Agent | nathan@ljhdunedin.co.nz

LJ Hooker Dunedin (03) 470 1370
Wayne Graham Realty Ltd
63 Musselburgh Rise, DUNEDIN 9013
dunedin.ljhooker.co.nz | dunedin@ljhdunedin.co.nz



Disclaimer: All information contained therein is gathered from relevant third parties sources.
We cannot guarantee or give any warranty about the information provided. Interested parties must rely solely on their own enquiries.

LJ Hooker Dunedin
(03) 470 1370
Wayne Graham Realty Ltd