

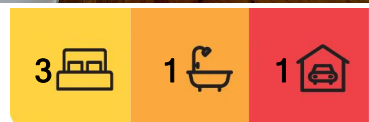
## Macquarie Fields, 27 Parliament Road

### Three Bed House in Macquarie Fields

Convenience at its best! Located in the heart of Macquarie Fields (close to shops, transport and Macquarie Fields Public School) this tidy three-bedroom home will impress any growing family with plenty of space and abundance of features. Fully air-conditioned and with timber floor throughout this home has been freshly painted to welcome you.

The property features:

- + Three spacious bedrooms
- + Built-in to two bedrooms
- + Spacious lounge
- + Updated kitchen with induction cooktop
- + Internal laundry with second toilet
- + Ducted air-con
- + Timber floor
- + Single lock up garage



**For Lease**  
Please Call

**View**  
[l.jhooker.com.au/9ZVHUA](https://l.jhooker.com.au/9ZVHUA)

**Contact**  
**Nahid Zaman**  
0410 703 203  
nahid.minto@l.jhooker.com.au  
**Ashraf Uddin**  
0432 822 644  
ashraf.minto@l.jhooker.com.au



**Disclaimer:** All information contained therein is gathered from relevant third parties sources. We cannot guarantee or give any warranty about the information provided. Interested parties must rely solely on their own enquiries.

**LJ Hooker Minto**  
**02 8734 3211**

## More About this Property

Property ID	9ZVHUA
Property Type	House
Including	Toilets (2)

### Nahid Zaman 0410 703 203

Business Development Manager | [nahid.minto@ljhooker.com.au](mailto:nahid.minto@ljhooker.com.au)

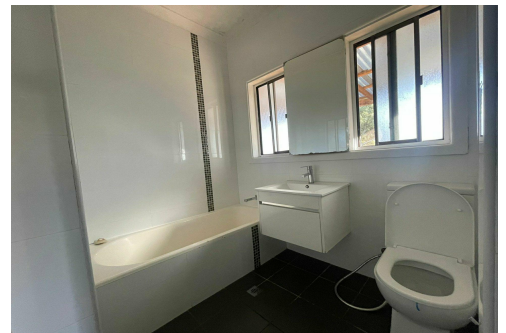
### Ashraf Uddin 0432 822 644

Property Investment Manager | [ashraf.minto@ljhooker.com.au](mailto:ashraf.minto@ljhooker.com.au)

### LJ Hooker Minto 02 8734 3211

Shop 72, 10 Brookfield Road, MINTO NSW 2566

[minto.ljhooker.com.au](mailto:minto.ljhooker.com.au) | [minto@ljhooker.com.au](mailto:minto@ljhooker.com.au)



**Disclaimer:** All information contained therein is gathered from relevant third parties sources.  
We cannot guarantee or give any warranty about the information provided. Interested parties must rely solely on their own enquiries.

**LJ Hooker Minto**  
**02 8734 3211**