

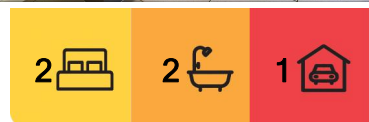
## Lutwyche, 7/71 Thistle Street

**TWO BEDROOM UNIT w/ STUDY, HUGE BALCONY & NEXT TO KEDRON BROOK !**

This property is the ideal low maintenance, secure inner-city living apartment you have been looking for !! Close to public transport and right next door to the beautiful Kedron Brook.

Live here and you'll love;

- Ducted air conditioning !!
- Open plan lounge/dining area
- Modern kitchen with dishwasher and stone benchtops
- Huge covered balcony facing the Kedron Brook
- Large separate study area
- Secure garage with remote access
- Woolloowin State School and Kedron State High School catchments
- Pets considered in line with the new tenancy laws (<https://www.rta.qld.gov.au/forms->



**For Lease**  
Please Call

**View**  
[ljhooker.com.au/1CGMF4N](http://ljhooker.com.au/1CGMF4N)



**LJ Hooker Stafford**  
**(07) 3357 1888**

**Disclaimer:** All information contained therein is gathered from relevant third parties sources. We cannot guarantee or give any warranty about the information provided. Interested parties must rely solely on their own enquiries.

**\*\* PLEASE READ CAREFULLY \*\***

\* To apply online copy & paste this link in your browser

<https://applyonline.ljhookerstafford.com.au/>. We do not accept 1Form applications.

\* To arrange an inspection click GET IN TOUCH and submit your details, we will reply with inspection information.

\* Open Homes are usually on Saturdays and the time will be published as soon as it is confirmed. There is no need to register, simply be there at the start time listed.

\* In preparing this information, we have used our best endeavours to ensure that the information is true and accurate however we accept no responsibility and disclaim all liability in respect of any errors, inaccuracies, or misstatements. Prospective tenants should make their own inquiries to verify the information provided which is provided as a convenience to clients.

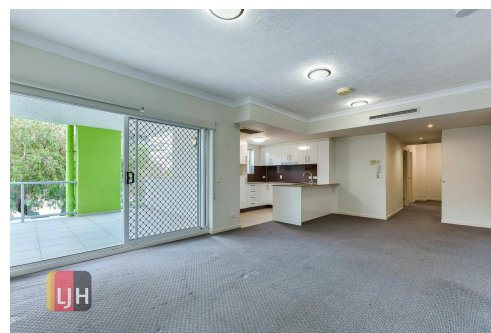
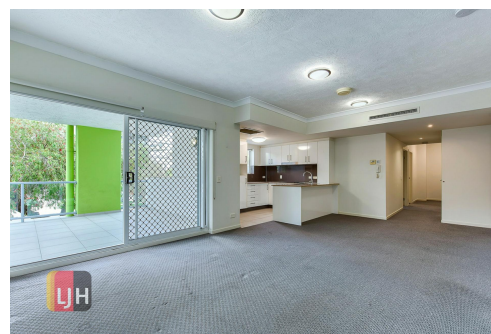
## More About this Property

<b>Property ID</b>	1CGMF4N
<b>Property Type</b>	Unit
<b>Including</b>	Ensuite Balcony Dishwasher

**LJ Hooker Stafford (07) 3357 1888**

205 Stafford Road, STAFFORD QLD 4053

[stafford.ljhooker.com.au](mailto:stafford.ljhooker.com.au) | [stafford@ljhooker.com.au](mailto:stafford@ljhooker.com.au)







**7/71 Thistle St, Lutwyche**

**FLOOR AREA SIZES**

Internal 80m<sup>2</sup> | External 26m<sup>2</sup> | Car Space 14m<sup>2</sup> | **TOTAL 120m<sup>2</sup>**

Whilst every attempt has been made to ensure the accuracy of the floor plans contained here, measurements of doors, windows, rooms and any other items are approximate and no responsibility is taken for any error, omission or misstatement. These plans are for representation purposes only. Provided by primepixels.com.au



**LJ Hooker Stafford**  
**(07) 3357 1888**

**Disclaimer:** All information contained therein is gathered from relevant third parties sources.  
We cannot guarantee or give any warranty about the information provided. Interested parties must rely solely on their own enquiries.