



Lutwyche, 114 Stoneleigh Street

FULLY AIR CONDITIONED HOME WITH CITY VIEWS!

Located in the Windsor State School catchment, this stunning home is well-positioned to give you easy access to travel to several inner city private schools & hospitals PLUS a direct link into the tunnel network for those who need to travel to the airport, Gold Coast or Sunshine Coast.

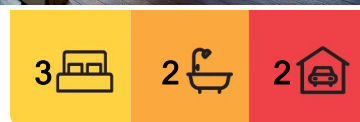
The property is located close to public transport, either a short walk to the Northern Busway or Albion Train Station. In addition, its just a short drive into the CBD or a stroll to the shopping and dining precinct in both Lutwyche and Albion.

Live here and you'll love:

- 3 spacious bedrooms - all with air conditioning, ceiling fans & built in robes
- Master bedroom with ensuite bathroom
- Air conditioned open plan living areas - opening onto the large deck with city views
- Modern kitchen with dishwasher and gas cooking
- Second, lower level entertaining area



Disclaimer: All information contained therein is gathered from relevant third parties sources. We cannot guarantee or give any warranty about the information provided. Interested parties must rely solely on their own enquiries.



For Lease
Please Call

View
ljhooker.com.au/1DMQF4N

LJ Hooker Stafford
(07) 3357 1888

- Fully fenced yard
- Double car lock up garage with extra room for storage
- Side access to backyard from Campbell Street
- Pets considered in line with the new tenancy laws (<https://www.rta.qld.gov.au/forms-resources/factsheets/renting-with-pets-fact-sheet>)

**** PLEASE READ CAREFULLY ****

* To apply online copy & paste this link in your browser

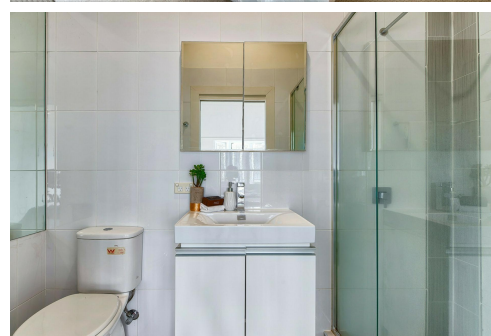
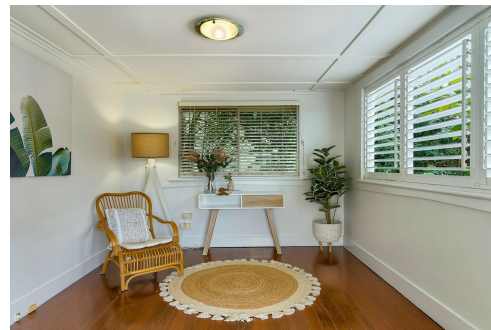
<https://applyonline.ljhookerstafford.com.au/>. We do not accept 1Form applications.

* To apply on paper, you can complete an RTA Form 22 Rental Application at our office.

* To arrange an inspection click GET IN TOUCH and submit your details, we will reply with inspection information.

* Open Homes are usually on Saturdays and the time will be published as soon as it is confirmed. There is no need to register, simply be there at the start time listed.

* In preparing this information, we have used our best endeavours to ensure that the information is true and accurate however we accept no responsibility and disclaim all liability in respect of any errors, inaccuracies, or misstatements. Prospective tenants should make their own inquiries to verify the information provided which is provided as a convenience to clients.



More About this Property

Property ID	1DMQF4N
Property Type	House
Including	Deck

LJ Hooker Stafford (07) 3357 1888

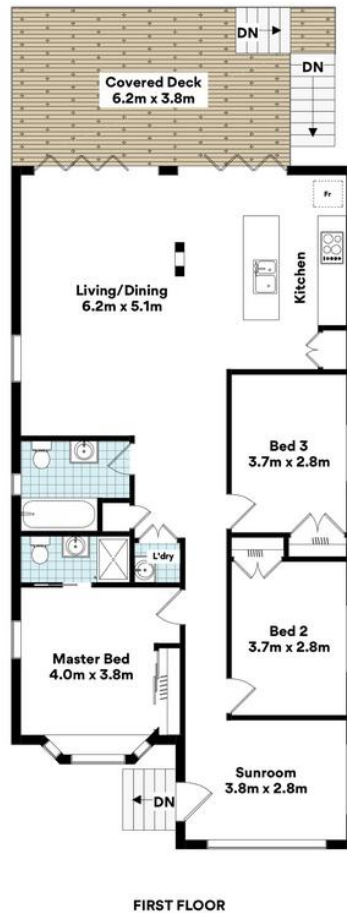
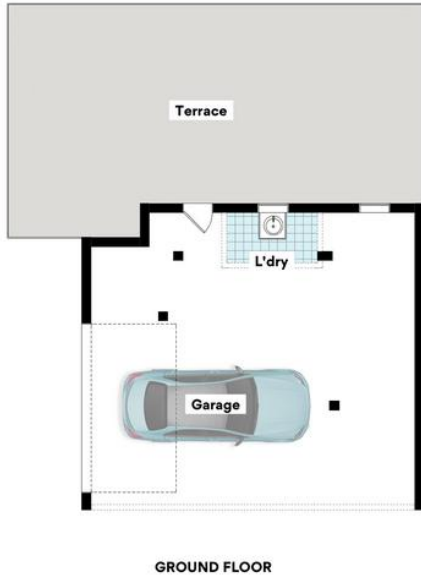
205 Stafford Road, STAFFORD QLD 4053

stafford.ljhooker.com.au | stafford@ljhooker.com.au



Disclaimer: All information contained therein is gathered from relevant third parties sources. We cannot guarantee or give any warranty about the information provided. Interested parties must rely solely on their own enquiries.

LJ Hooker Stafford
(07) 3357 1888



114 Stoneleigh St, Lutwyche



FLOOR AREA SIZES

Internal 179m² | External 74m² | Total 253m²

Whilst every attempt has been made to ensure the accuracy of the floor plans contained here, measurements of doors, windows, rooms and any other items are approximate and no responsibility is taken for any error, omission or misstatement.

These plans are for representation purposes only. Provided by primepixels.com.au