

Lucknow, 17 Bottlebrush Way

Stunning Brand New 4-Bedroom Home in Brookfield Lakes!

AN APPLICATION COMPLETED IN FULL MUST BE SUBMITTED PRIOR TO BOOKING A PRIVATE INSPECTION

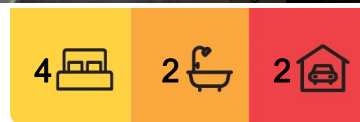
Welcome to your dream home! This beautifully designed brand-new property in the heart of Brookfield Lakes offers everything you need for a comfortable and stylish lifestyle.

Key Features:

- 4 spacious bedrooms, including a main bedroom with an ensuite and walk-in robe.
- A modern open-plan living area with split system, perfect for entertaining or relaxing with family.
- A fully equipped kitchen with a 900mm oven, gas cooktop, and dishwasher for convenience.



Disclaimer: All information contained therein is gathered from relevant third parties sources. We cannot guarantee or give any warranty about the information provided. Interested parties must rely solely on their own enquiries.



For Lease
Please Call

View
ljhooker.com.au/ME1FCA

Contact
Lucy Darby
0422 914 067
ldarby.paynesville@ljhooker.com.au

LJ Hooker Paynesville | Lakes Entrance | Metung
(03) 5156 6166

Main bathroom with contemporary fixtures.
Low-maintenance yard - perfect for busy families or professionals..

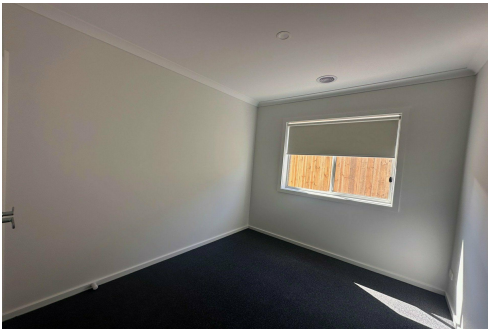
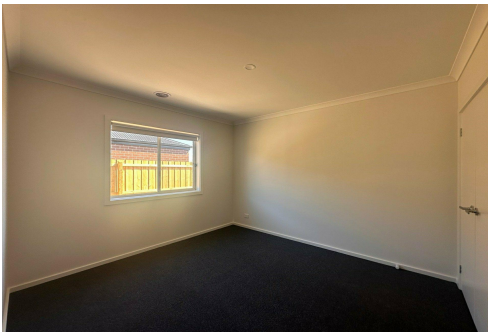
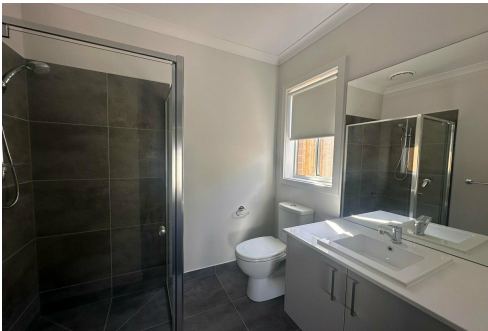
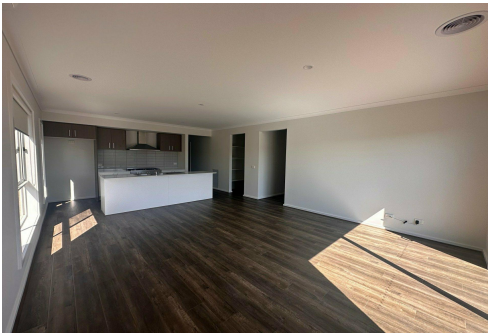
Don't miss out – Contact us now for more details!

More About this Property

Property ID	ME1FCA
Property Type	House
Including	Air Conditioning Ducted Heating Dishwasher Floorboards Built-in-Robes Secure Parking Fully Fenced Remote Garage

Lucy Darby 0422 914 067
Property Manager | ldarby.paynesville@ljhooker.com.au

LJ Hooker Paynesville | Lakes Entrance | Metung (03) 5156 6166
25A Esplanade, PAYNESVILLE VIC 3880
paynesville.ljhooker.com.au | paynesville@ljhooker.com.au



Disclaimer: All information contained therein is gathered from relevant third parties sources.
We cannot guarantee or give any warranty about the information provided. Interested parties must rely solely on their own enquiries.

LJ Hooker Paynesville | Lakes
Entrance | Metung
(03) 5156 6166