

Lovett Bay, 48 Sturdee Lane

Pittwater Sanctuary – Boat Access Only

North facing and abundantly light, this waterfront 3 bedroom home in Lovett Bay welcomes you. Comfortably nestled between the tranquility of Pittwater and the backdrop of Ku-ring-gai National Park's nature trails, this recently renovated lifestyle home offers the perfect retreat amongst it's bushland surroundings.

Features include:

- * Northerly aspect with ample sunlight amongst the native spotted gum forest in the beauty of Lovett Bay.
- * Capture the coastal breeze as you overlook the beautifully landscaped native gardens, complete with built in firepit, with Pittwater and Salvation Creek as your vista.
- * Expansive open living and dining with high vaulted ceilings, combustion



Disclaimer: All information contained therein is gathered from relevant third parties sources. We cannot guarantee or give any warranty about the information provided. Interested parties must rely solely on their own enquiries.

3

2

0

For Lease

Please Call

View

ljhooker.com.au/2S2GF6K

Contact

Kelli Church

0419 019 062

rentals2@ljhmv.com.au

Christopher Nelson

0418 228 613

rentals3@ljhmv.com.au

LJ Hooker Mona Vale
(02) 9979 8000

- fireplace and warm timber look flooring flows to generous entertaining deck
- * Lower level offering 2 double bedrooms and stylishly renovated bathroom complete with heated towel rail and separate laundry
 - * Generous master bedroom complete with walk in wardrobe, private balcony and water views
 - * Renovated contemporary second bathroom with quality inclusions including heated towel rail
 - * Spacious kitchen with dishwasher, stone bench-tops and an abundance of cupboard and bench space
 - * Additional undercover entertaining area on lower level
 - * Ducted and zoned reverse cycle AC throughout
 - * Exclusive use of private jetty and council waste services
 - * Short walk to public wharf and ferry services

A rare opportunity to immerse in the beauty of offshore living and Lovett Bay.

Please contact Kelli Church on 0419 019 062 to arrange an inspection.

APPLICATIONS: are via T-App <https://t-app.com.au/ljhmonavale>
 If form applications are no longer accepted

Disclaimer:

All information contained herewith, including but not limited to the general property description, price and the address, is provided to LJ Hooker Mona Vale by third parties. We have obtained this information from sources we believe to be reliable; however, we cannot guarantee its accuracy. The information contained herewith should not be relied upon and you should make your own enquiries and seek advice in respect of this property or any property on this website.

More About this Property

| | |
|----------------------|---------|
| Property ID | 2S2GF6K |
| Property Type | House |
| Land Area | 960 sqm |

Kelli Church

Property Investment Manager | rentals2@ljhmv.com.au

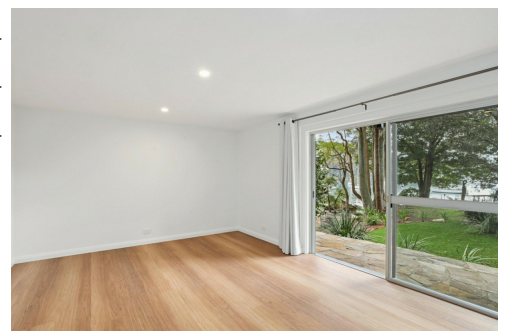
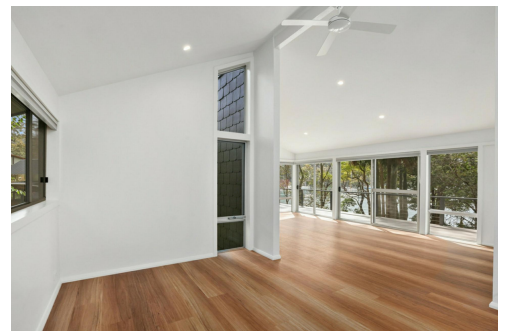
Christopher Nelson

Property Investment Manager | rentals3@ljhmv.com.au

LJ Hooker Mona Vale (02) 9979 8000

3/18 Bungan Street, MONA VALE NSW 2103

monavale.ljhooker.com.au | monavale@ljhmv.com.au



Disclaimer: All information contained therein is gathered from relevant third parties sources. We cannot guarantee or give any warranty about the information provided. Interested parties must rely solely on their own enquiries.

LJ Hooker Mona Vale
(02) 9979 8000