
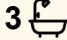



1/338 Robert Road, Lochinvar

4  3  1 

Brand New, Light-Filled Family Home in Lochinvar Downs

Be the first to call this stunning brand new home yours, positioned in the highly sought-after Lochinvar Downs Estate, one of the Hunter region's fastest-growing and most family-friendly communities.

Thoughtfully designed for modern living, this spacious double-storey residence offers flexibility, style and low-maintenance comfort, perfect for families, professionals or anyone needing room to move.

Why You'll Love It:

Flexible Floorplan —4 generous bedrooms, with the downstairs bedroom perfectly positioned to be used as a second living area, media room or home office for those wanting two separate living spaces.

Light-Filled Open Plan Living —Expansive kitchen, dining and lounge area flowing seamlessly to the alfresco.

Designer Kitchen —Stone benchtops, quality appliances, ample storage and breakfast bar.

FOR RENT

Please Call

AGENTS

Karen McMichael
kmc michael.maitland@ljhooker.com.au

AGENCY

LJ Hooker Maitland
(02) 4933 5511

All information contained therein is gathered from relevant third parties sources. We cannot guarantee or give any warranty about the information provided. Interested parties must rely solely on their own enquiries.

 **LJ Hooker**

Upstairs Retreat Feel —Additional bedrooms and bathrooms thoughtfully separated for privacy.

Covered Alfresco Area —Ideal for entertaining or relaxing year-round.

Double Garage —Secure internal access.

Brand New Build —Fresh, modern finishes throughout and ready to enjoy.

Prime Lochinvar Downs Location

Situated in the growing Lochinvar Downs Estate, you'll enjoy:

Minutes to Lochinvar Public School and local shops

Easy access to the New England Highway

Short drive to Maitland CBD

Close to vineyards, parks and open green spaces

Convenient commute to Newcastle and the Hunter Valley

This estate continues to grow in popularity for its peaceful surroundings, community feel and convenient access to everything the Hunter has to offer.

If you've been searching for a home that offers space, flexibility and modern comfort, this one ticks all the boxes, especially with the added option of a second living zone downstairs.

Disclaimer: The photos indicating the condition of the advertised property may or may not be an exact reflection of the current condition of the property. If you have any concerns please contact the office to confirm this prior to any inspection.

MORE DETAILS

Property ID	1ES9F6H
Property Type	Townhouse
Including	Ensuite Air Conditioning Built-in-Robes Area Views Carpeted Close to Schools Close to Shops Close to Transport Heating Kitchenette

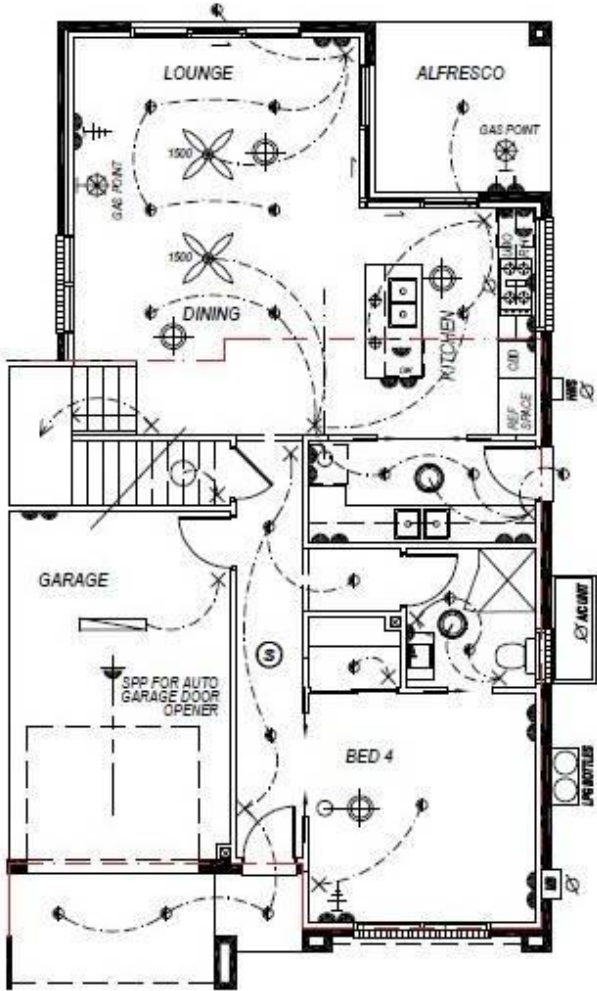
Karen McMichael

Property Investment Manager |
kmc michael.maitland@ljhooker.com.au

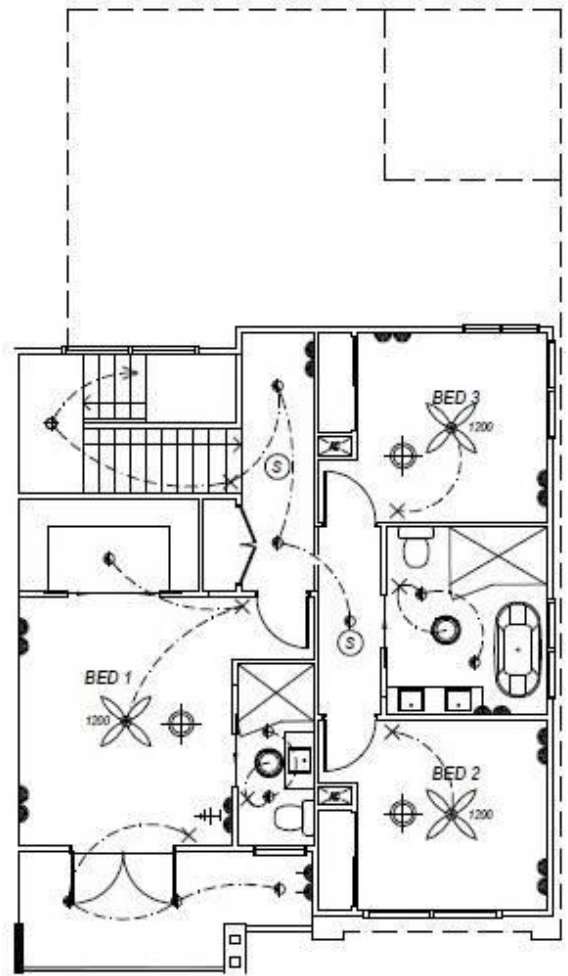
LJ Hooker Maitland (02) 4933 5511

24 Ken Tubman Drive, MAITLAND NSW 2320
maitland.ljhooker.com.au | maitland@ljhooker.com.au





DOWN UPSATIRS



UPSTAIRS