



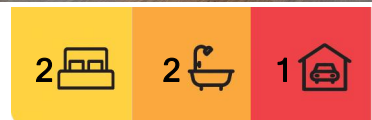
## Liverpool, B603/21 Atkinson Street

### MODERN LIVING AT ITS FINEST

Set in a very sought after modern complex, this two bedroom apartment provides an excellent standard of modern living. Located only a short walk away from The Paper Mill precinct & Liverpool Station the apartment features:

- 2 good size bedrooms. Master comes with ensuite access
- Light filled living space with timber flooring and air-condition
- Gas kitchen with stone benchtops and stainless steel appliances
- Modern bathrooms with an internal laundry
- Spacious balcony + Secure basement parking
- Short walk to The Paper Mill & Liverpool Station
- Within easy access to Liverpool CBD, Westfield Shopping & M5/M7 motorways

Contact LJ Hooker Edensor Park - 9823 8888 to arrange your inspection



**For Lease**  
Please Call

**View**  
[ljhooker.com.au/9JZHUC](http://ljhooker.com.au/9JZHUC)

**Contact**  
**Mariana Esho**  
0488 825 999  
[mariana.esho@ljhooker.com.au](mailto:mariana.esho@ljhooker.com.au)



**Disclaimer:** All information contained therein is gathered from relevant third parties sources. We cannot guarantee or give any warranty about the information provided. Interested parties must rely solely on their own enquiries.

**LJ Hooker Edensor Park**  
**(02) 9823 8888**

## More About this Property

Property ID	9JZHUC
Property Type	Apartment
Including	Toilets (2)

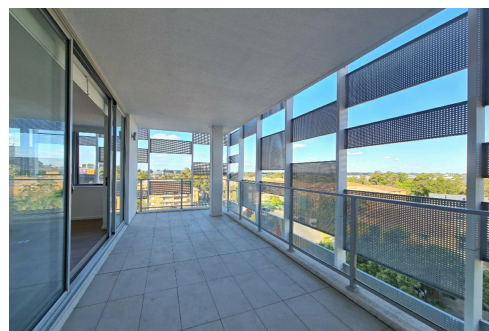
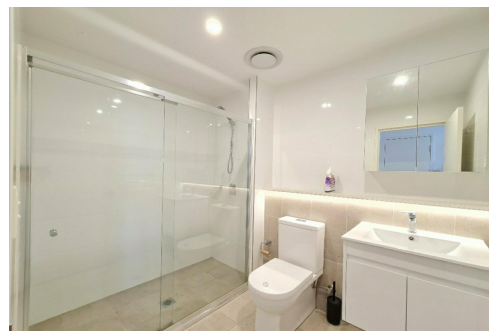
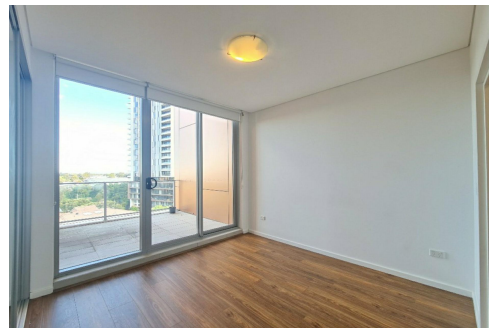
**Mariana Esho 0488 825 999**

| [mariana.esho@ljhooker.com.au](mailto:mariana.esho@ljhooker.com.au)

**LJ Hooker Edensor Park (02) 9823 8888**

Shop 8, 207-215 Edensor Road, Edensor Park Plaza, EDENSOR PARK NSW 2176

[edensorpark@ljhooker.com.au](mailto:edensorpark@ljhooker.com.au) | [edensorpark@ljhooker.com.au](mailto:edensorpark@ljhooker.com.au)



**Disclaimer:** All information contained therein is gathered from relevant third parties sources. We cannot guarantee or give any warranty about the information provided. Interested parties must rely solely on their own enquiries.

**LJ Hooker Edensor Park  
(02) 9823 8888**