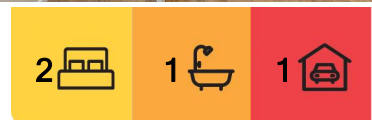




## Lithgow, 16/202-206 Mort Street

### CUSTOM DISABILITY APARTMENTS

- \* Luxurious and spacious Specialist Disability Accommodation (SDA)
- \* Specifically designed and crafted to welcome Participants who may require 'Improved Liveability', 'Fully Accessible', and 'High Physical Support' accommodation via the NDIS scheme.
- \* Your choice of 1, 2, and 3 bedroom apartments
- \* Wheelchair accessible kitchen with electric cooking, dishwasher, and height adjustable bench.
- \* Remote and/or voice activated ducted air-conditioning, lighting, and custom blinds.
- \* High speed NBN to the premises
- \* Bedroom(s) and Bathroom engineered for the installation of wall and/or ceiling mounted hoists (if required)
- \* Undercover and wheelchair accessible community space. Fitted with wheelchair accessible BBQs.



**For Lease**  
Contact agent

**View**  
By Appointment

**Contact**  
**Lynette DeLosa**  
0438 696 291  
ldelosa@ljhlithgow.com.au



**LJ Hooker Lithgow**  
**(02) 6351 2548**

**Disclaimer:** All information contained therein is gathered from relevant third parties sources. We cannot guarantee or give any warranty about the information provided. Interested parties must rely solely on their own enquiries.

## More About this Property

Property ID	1HF4F9X
Property Type	Apartment
Land Area	1996 sqm

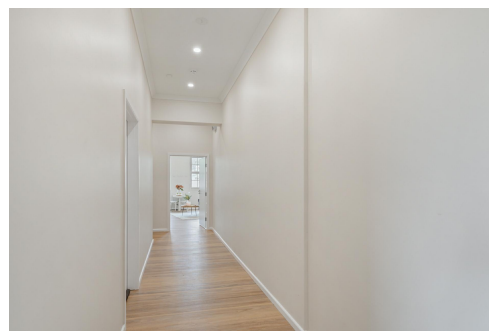
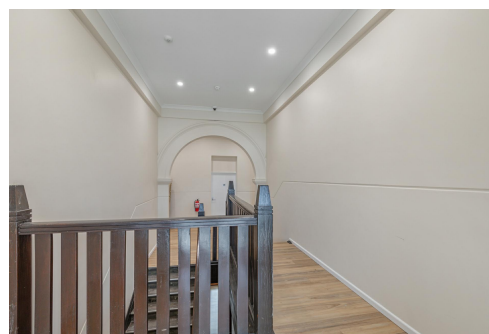
**Lynette DeLosa 0438 696 291**

Leasing & Commercial Manager | [ldelosa@ljhlithgow.com.au](mailto:ldelosa@ljhlithgow.com.au)

**LJ Hooker Lithgow (02) 6351 2548**

201 Main Street, LITHGOW NSW 2790

[lithgow.ljhooker.com.au](http://lithgow.ljhooker.com.au) | [enquiries@ljhlithgow.com.au](mailto:enquiries@ljhlithgow.com.au)



**Disclaimer:** All information contained therein is gathered from relevant third parties sources.  
We cannot guarantee or give any warranty about the information provided. Interested parties must rely solely on their own enquiries.

**LJ Hooker Lithgow**  
**(02) 6351 2548**