

Lightsview, 16 Tiara Street

Edgy in design and exciting in concept

3 3 1

Appointed over 3 levels this chic contemporary terrace home offers an exciting opportunity to live in a near city cosmopolitan location. Set in a wonderful position with a reserve directly across the road, and within walking distance to the café, this property offers an enviable relaxed lifestyle.

Featuring the following:

- * Large windows and central atrium
- * 3 large bedrooms and three bathrooms
- * Bedroom 1 with ensuite
- * Bedroom 2 with private balcony
- * Bedroom 3 with walk-in robe, ensuite and access to the courtyard
- * Central study nook
- * Private courtyard entry
- * Lounge with balcony and views to Adelaide Hills

For Lease

\$630 per week

View

By Appointment

Contact

Jiawen Gao

0422571024

jiawen.gao@ljhadelaidemetro.com.au



LJ Hooker St Peters
(08) 8362 8008

Disclaimer: All information contained therein is gathered from relevant third parties sources. We cannot guarantee or give any warranty about the information provided. Interested parties must rely solely on their own enquiries.

* Remote controlled garage

This amazing property takes in an abundance of natural light and hills views.

Entry to the property is via a private courtyard with stairs leading up to the kitchen, adjacent meals area and third bathroom. The spacious lounge room enjoys a private balcony with hills views. The secure single remote controlled garage provides direct access to the property.

NOTE ABOUT THE OPEN INSPECTIONS: Interested persons MUST register their details to attend any of the scheduled viewing dates and times allocated. The agent will not attend the listed viewing date and time if you do not register and confirm your attendance. It is for this reason we highly recommend you register to attend to ensure the agent's attendance and to avoid disappointment.

Disclaimer: All information provided has been obtained from sources we believe to be accurate, however, we cannot guarantee the information is accurate and we accept no liability for any errors or omissions. We encourage all interested parties to make their own enquiries, particularly regarding NBN/internet availability at the property.

More About this Property

Property ID	2DCCFDZ
Property Type	Townhouse
Including	Air Conditioning Courtyard Built-in-Robes

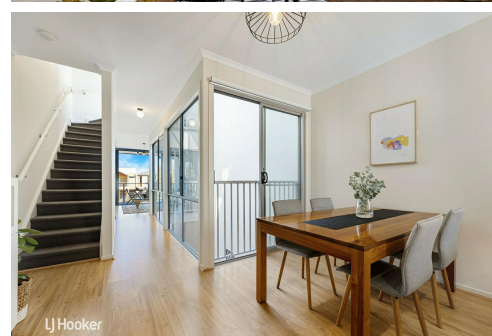
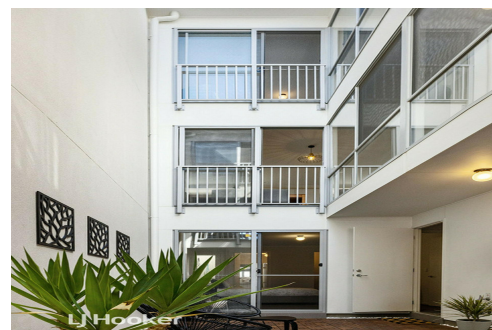
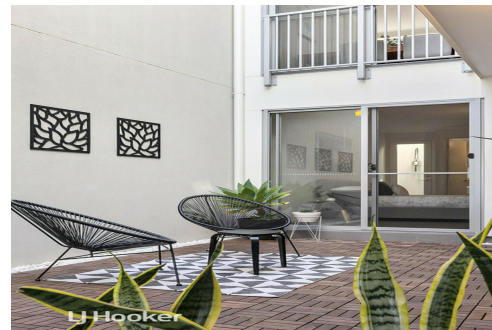
Jiawen Gao 0422571024

Property Investment Manager | jiawen.gao@ljhadelaidemetro.com.au

LJ Hooker St Peters (08) 8362 8008

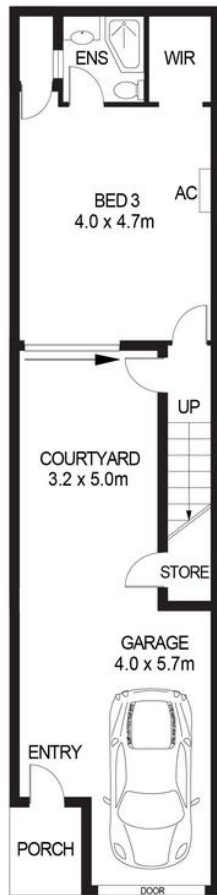
2a Portrush Road, PAYNEHAM SA 5070

stpeters.ljhooker.com.au | stpeters@ljhadelaidemetro.com.au

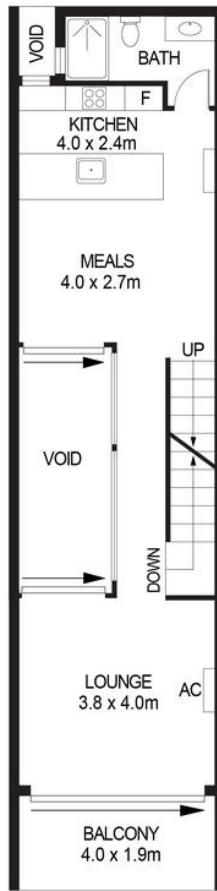


Disclaimer: All information contained therein is gathered from relevant third parties sources. We cannot guarantee or give any warranty about the information provided. Interested parties must rely solely on their own enquiries.

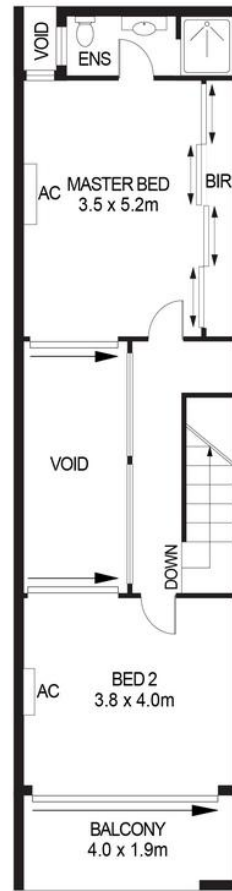
**LJ Hooker St Peters
(08) 8362 8008**



LOWER FLOOR



MIDDLE FLOOR



UPPER FLOOR

APPROXIMATE DIMENSIONS	
LIVING:	185.1m ²
BALCONY:	15.2m ²
PORCH:	2.7m ²
GARAGE:	22.8m ²
TOTAL:	225.8 m ²

16 TIARA STREET, LIGHTSVIEW

DISCLAIMER

PLANS SHOWN ARE FOR MARKETING PURPOSES ONLY. ALL DIMENSIONS ARE APPROXIMATE AND NOT TO SCALE. THEY ARE SUBJECT TO ERRORS AND INACCURACIES AND NO LIABILITY WILL BE ACCEPTED. INTERESTED PARTIES SHOULD MAKE THEIR OWN ENQUIRIES.



IMAGES AND FLOORPLAN BY:
IN-HOUSE
IMAGING
inhouseimaging.com.au