



Leppington

PRIMARY PRODUCERS | 5 ACRES

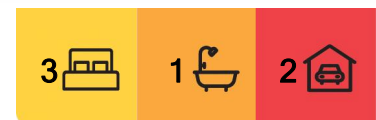
LJ Hooker Leppington | Austral presents a rare opportunity in the heart of our growing Suburb Leppington.

Situated right on Camden Valley Way, you don't want to miss out!

- Three bedrooms
- Bathroom with bath tub
- 2 separate living areas
- Kitchen with ample storage and electrical appliances
- Floor boards and ceiling fans throughout
- Gated entrance
- External laundry with toilet
- Small shed and concreted fenced in backyard
- Single lockable garage, single carport and separate shed behind



Disclaimer: All information contained therein is gathered from relevant third parties sources. We cannot guarantee or give any warranty about the information provided. Interested parties must rely solely on their own enquiries.



For Lease

\$400 wk

View

By Appointment

Contact

Trinity Boscutti

0418 637 708

pm.leppington@ljhooker.com.au

LJ Hooker Leppington | Austral
(02) 9606 4311

This property is commercial, for market gardeners and primary producers, enquire within for further details (02) 9606 4311.

More About this Property

Property ID	119JHCV
Property Type	AcreageSemi-rural
Including	Toilets (2)

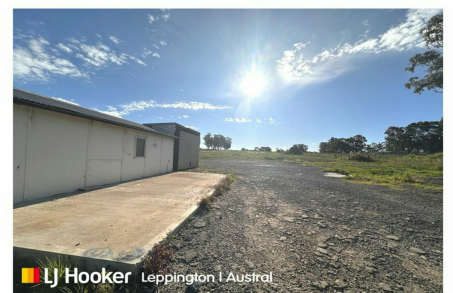
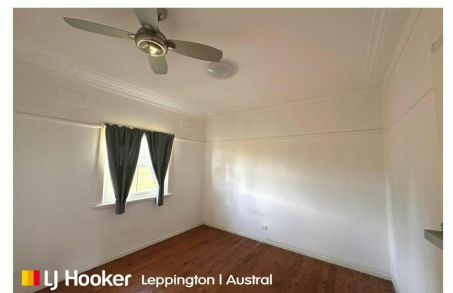
Trinity Boscutti 0418 637 708

Property Investment Manager | pm.leppington@ljhooker.com.au

LJ Hooker Leppington | Austral (02) 9606 4311

Leppington Village Shopping Centre, Shop GC1, 108-116 Ingleburn Road,
LEPPINGTON NSW 2179

leppington@ljhooker.com.au | leppington@ljhooker.com.au



Disclaimer: All information contained therein is gathered from relevant third parties sources.
We cannot guarantee or give any warranty about the information provided. Interested parties must rely solely on their own enquiries.

LJ Hooker Leppington | Austral
(02) 9606 4311