

417 Leigh Road, Leigh

CLIFFTOP DESIGNER HOME AVAILABLE NOW!

Perched on the clifftop with stunning views over Whangateau Harbour, Omaha, and Ti Point, this unique 230m² home is surrounded by native bush with beach access below. Available fully furnished or unfurnished, the home offers expansive decks on every level, a sunny courtyard with outdoor fireplace, and a lovely large fireplace creating warmth and charm year-round.

The spacious layout includes four bedrooms with two upstairs and two downstairs, two bathrooms, a separate lounge, rumpus room, and generous living areas designed for relaxed coastal living and entertaining. Most bedrooms open onto decks to enjoy the breathtaking views.

There is also a double internal access garage, carport, gated entry, and plenty of off-street parking.

Located in sought-after Tramcar Bay, less than 10 minutes to Matakana and only an hour north of Auckland.

Please contact Roxanne on 027 271 4875 to arrange a private viewing.

4 🚗 2 🚗 5 🚗

FOR RENT
\$900 per week

VIEW
By Appointment

AGENTS
Roxanne Harrison
027 2714875
roxanne.harrison@ljhooker.co.nz

AGENCY
LJ Hooker Warkworth
(09) 425 8589

All information contained therein is gathered from relevant third parties sources.
We cannot guarantee or give any warranty about the information provided.
Interested parties must rely solely on their own enquiries.

 **LJ Hooker**

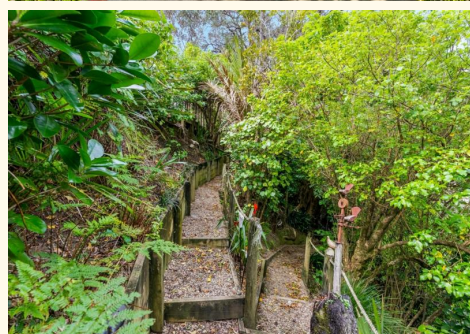
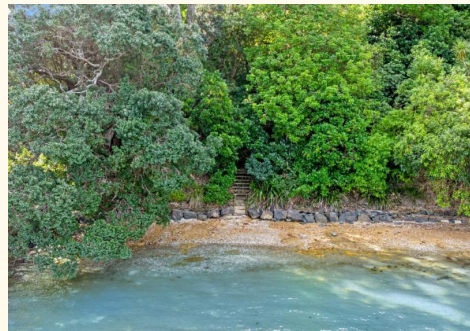
Apply online - <https://apply.tenant.co.nz/6496306>

MORE DETAILS

Property ID EKJ20
Property Type House
Including Toilets (2)
Licensed Real Estate Agents (REAA2008)

Roxanne Harrison 027 2714875
Salesperson | roxanne.harrison@ljhooker.co.nz

LJ Hooker Warkworth (09) 425 8589
20 Queen Street, WARKWORTH NZ
warkworth.ljhooker.co.nz | warkworth@ljhooker.co.nz



All information contained therein is gathered from relevant third parties sources.
We cannot guarantee or give any warranty about the information provided.
Interested parties must rely solely on their own enquiries.