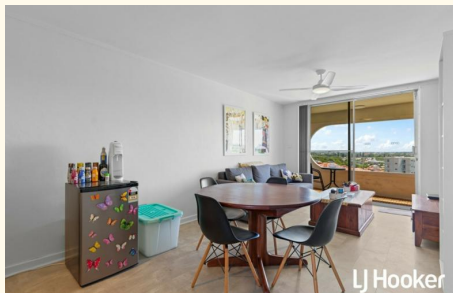




Leased



LJ Hooker



LJ Hooker



LJ Hooker

Unit 33/46-48 Rutland Av, Lathlain

2 🏠 1 🚿 1 🚗

Furnished apartment in the heart of Lathlain

Welcome to 33/46-48 Rutland Avenue, Lathlain, a stylishly fully furnished and low-maintenance apartment offering comfort, convenience, and lifestyle in one of Perth's most connected inner-city pockets.

Perfect for professionals, couples, or anyone seeking easy-care living close to the CBD, this modern residence places you just moments from vibrant café strips, parks, and transport links.

Step inside to discover a light-filled open-plan living and dining area designed for relaxed everyday living. The recently installed kitchen features sleek cabinetry, quality appliances, ample bench space, and generous storage, ideal for cooking and entertaining with ease.

Both bedrooms offer a peaceful retreat, complete with built-in robe storage. A modern bathroom showcases contemporary finishes, a large shower, vanity, and toilet, while the cleverly integrated laundry space adds everyday practicality.

Glass sliding doors extend the living area out to a private balcony, perfect for enjoying your morning coffee or unwinding after work.

FOR RENT

Please Call

AGENCY

LJ Hooker Victoria Park | Belmont (WA)
(08) 9473 7777

All information contained therein is gathered from relevant third parties sources. We cannot guarantee or give any warranty about the information provided. Interested parties must rely solely on their own enquiries.



Situated in sought-after Lathlain, you'll enjoy being just minutes from the popular Victoria Park café strip, leafy local parks, Crown Entertainment Complex, Optus Stadium, and easy access to the Perth CBD. Public transport options are close by, making commuting simple and convenient.

Prime inner-city location close to cafés, parks, and transport

Key Features:

- Fully furnished
- Light-filled open-plan living and dining
- Modern kitchen with quality appliances and ample storage
- Spacious bedrooms with built-in robe
- Private balcony
- Secure complex living
- Allocated parking bay

- Fully Furnished
- 6 or 12-month initial lease term

Please register your details by requesting/booking an inspection

- **** ARE YOU A LANDLORD?** If you are looking for property management services, we would love to hear from you. Contact our Business Development Team on 0407 722 867 or newrentals@ljhvicpark.com.au for a no-obligation and confidential conversation.

MORE DETAILS

Property ID	5GPPFFB
Property Type	Unit
Including	Air Conditioning
	Toilets (1)
	Balcony
	Built-in-Robes
	Area Views
	Car Parking - Surface
	Close to Transport
	Lift Installed

LJ Hooker Victoria Park | Belmont (WA) (08) 9473 7777
288 Albany Highway, VICTORIA PARK WA 6100
victoriapark-belmontwa.ljhooker.com.au |
reception@ljhvicpark.com.au

