

7/1 Jardine Street, Kingston

2 🏠 2 🚿 2 🚗

Parkland views in Kingston's Blue Dome Complex

Discover urban sophistication in this generous contemporary apartment, nestled within the prestigious Blue Dome complex in the heart of Kingston. This split-level apartment offers a unique blend of space, style, and location that's hard to beat.

The light filled, open-plan living area features soaring ceilings that create a sense of spaciousness and grandeur. The freshly painted interior provides a clean, modern canvas for your personal style. The cleverly designed space seamlessly integrates a contemporary kitchen with timber benchtops and modern appliances, perfect for culinary enthusiasts and entertainers alike.

The open plan layout maximizes every inch, with two generous bedrooms thoughtfully positioned upstairs for privacy. The sun-drenched master retreat boasts an ensuite and ample storage, while the second bedroom features built-in robes.

Embrace indoor-outdoor living with large west-facing and east-facing balconies, offering versatile spaces for relaxation and alfresco dining. These outdoor havens provide the perfect vantage point to soak in the leafy surrounds and vibrant Kingston atmosphere.

FOR RENT

Please Call

AGENTS

Luzian Borst

0404 827 483

luzian.borst@ljhmanuka.com.au

AGENCY

LJ Hooker Manuka

(02) 6239 5551

All information contained therein is gathered from relevant third parties sources. We cannot guarantee or give any warranty about the information provided. Interested parties must rely solely on their own enquiries.

 **LJ Hooker**

Just outside the front door, a stand-alone double lock-up garage with attached secure storage room provides ample and rare space for apartment living.

Positioned overlooking picturesque Telopea Park, this Blue Dome gem puts you at the centre of it all. Enjoy easy walks to the bustling Kingston Foreshore, charming Old Bus Depot Markets, and an array of boutique shops and cafes in nearby Manuka Village and old Kingston shops.

This low-maintenance loft-style apartment offers an unparalleled lifestyle in a quiet complex featuring on-site visitor parking and newly landscaped gardens, enhancing the appeal of this already exceptional property.

Features:

- Split Level apartment in the prestigious Blue Dome complex
- Soaring ceilings and open-plan living area
- Freshly painted throughout
- Modern kitchen with timber benchtops
- Large west-facing and east-facing balconies
- Master bedroom with ensuite and ample storage
- Stand-alone double lock-up garage with storage room
- Prime location overlooking Telopea Park
- Walking distance to Kingston Foreshore, Manuka Village, and old Kingston shops
- site visitor parking
- Newly landscaped garden
- Exclusive and quiet complex

EER: Unavailable at this time
Ceiling installation compliant : yes

To register for an open click BOOK INSPECTION on LJ Hooker Manuka, Allhomes & REA websites to select an open time or click EMAIL AGENT on Domain to enter your details and you will be emailed/text instantly with available open times.

Open times are subject to change. Please ensure you have registered to the inspection time so you will be notified of any changes or cancellations.

Please note: Our Leasing Consultant will send you an updated rental list each week to keep you informed of our current rental properties. If at any time you would like your email to be removed please reply UNSUBSCRIBE to the email.

Disclaimer: All information contained herein is gathered from external sources we consider to be reliable. However, we cannot guarantee or give any warranty about the information provided. Interested parties must solely rely on their own inquiries and satisfy themselves in all respects.

Disclaimer:

While all care has been taken in compiling information regarding properties marketed for rent or sale, we accept no responsibility and disclaim all liabilities regarding any errors or inaccuracies contained herein. All parties should rely on their own investigation to validate the information provided.

EER 

MORE DETAILS

Property ID 1UH2FMF
Property Type Apartment
EER 0.5
Including Balcony
Built-in-Robes
Liveability

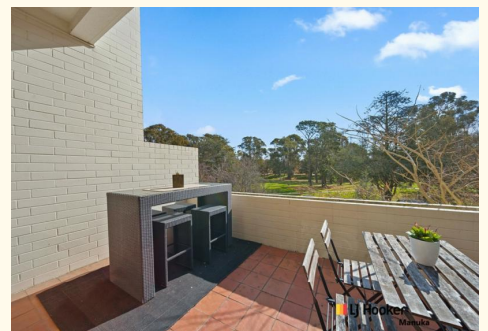
Luzian Borst 0404 827 483

Property Consultant | luzian.borst@ljhmanuka.com.au

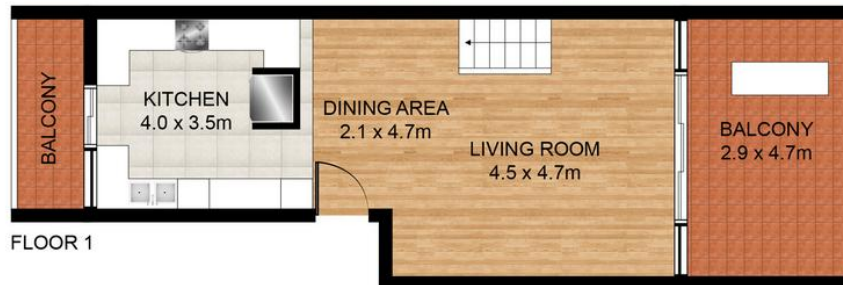
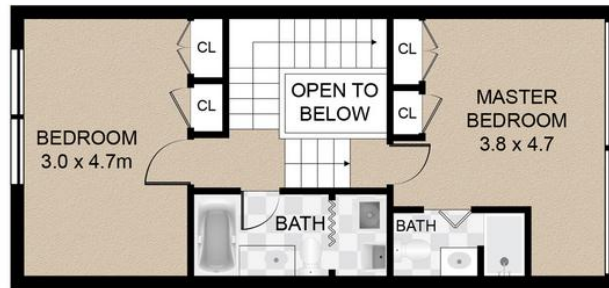
LJ Hooker Manuka (02) 6239 5551

20 Bougainville Street, MANUKA ACT 2603

manuka.ljhooker.com.au | manuka@ljhmanuka.com.au



All information contained therein is gathered from relevant third parties sources.
We cannot guarantee or give any warranty about the information provided.
Interested parties must rely solely on their own enquiries.



7/1 Jardine Street, Kingston



N

Disclaimer: Plans are indicative only and should be checked by the prospective purchaser. Plans shown are for presentation purposes and are not part of any legal document. All measurements and figures are approximate. The information herein is gathered from sources we believe to be reliable.

aperture
real estate