



Kingsford, 132 Botany Street

Stunning 3-Bedroom, 2-Bathroom Freestanding Home in Kingsford

Recently renovated to the highest standards, this exceptional 3-bedroom, 2-bathroom home offers privacy, modern comfort, and a convenient location. Bathed in northern light, the property features multiple outdoor entertaining areas, including terraces and a built-in barbecue.

Inside, the home boasts three spacious bedrooms with built-ins, a cozy lounge with a gas fireplace, and a deluxe kitchen with stone benchtops and gas appliances. Additional features include dark timber floors, chic bathrooms with frameless glass showers, ducted air conditioning, and a sunny garden.

Located just minutes from Randwick Junction, UNSW, Kingsford shops, top schools, Eastern beaches and the light rail, this home offers the ultimate blend of timeless style and modern convenience.

3

2

0

For Lease
\$1,500

View
By Appointment

Contact
Paloma Soulos
0466 975 880
paloma.soulos@ljhdoublebay.com



LJ Hooker Double Bay
(02) 9185 2816

Disclaimer: All information contained therein is gathered from relevant third parties sources. We cannot guarantee or give any warranty about the information provided. Interested parties must rely solely on their own enquiries.

- Freestanding home with abundant northern light
- 3 spacious bedrooms
- Built in wardrobes
- Multiple outdoor entertaining spaces
- Built-in barbecue
- Lounge with gas fireplace
- Modern kitchen with stone benchtops and gas appliances
- 2 stylish bathrooms with frameless glass showers
- Ducted air conditioning
- Potential off-street parking (STCA)
- Easy access to eastern beaches, schools, and public transport

More About this Property

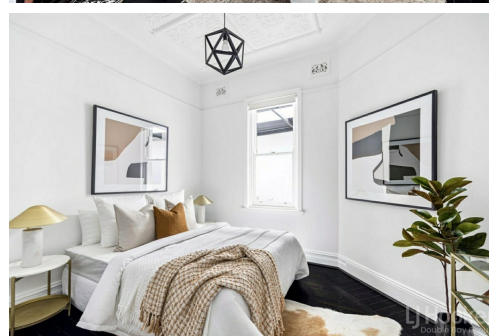
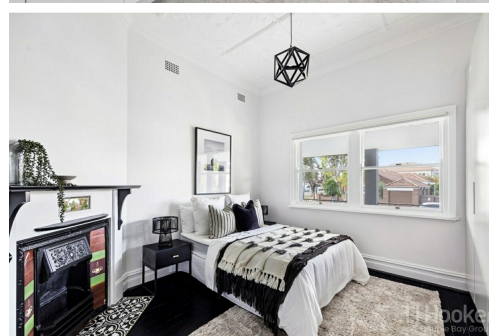
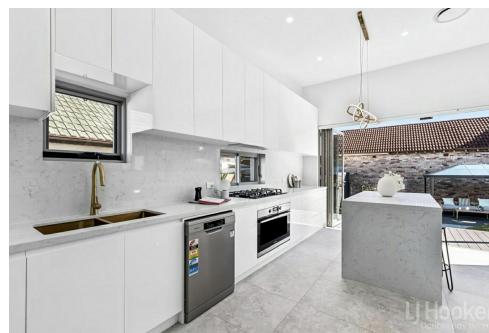
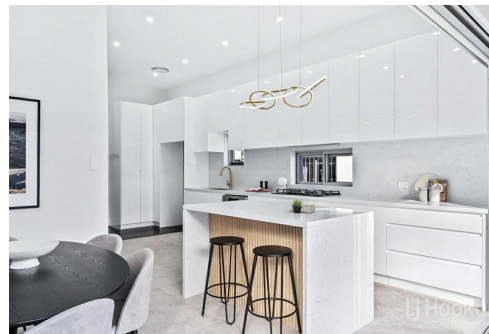
| | |
|----------------------|--|
| Property ID | 20QHYY |
| Property Type | House |
| Land Area | 347.8 sqm |
| Including | Air Conditioning Courtyard Balcony Dishwasher Built-in-Robes Close to Schools Close to Shops Close to Transport |

Paloma Soulos 0466 975 880

Head of Property Management / LREA | paloma.soulos@ljhdouletbay.com

LJ Hooker Double Bay (02) 9185 2816

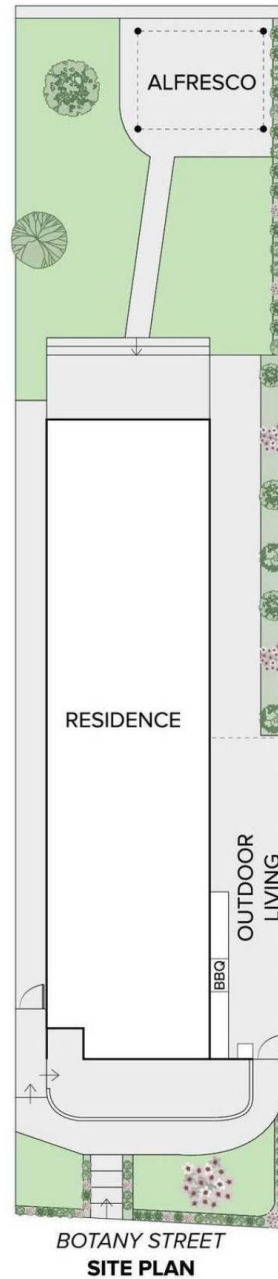
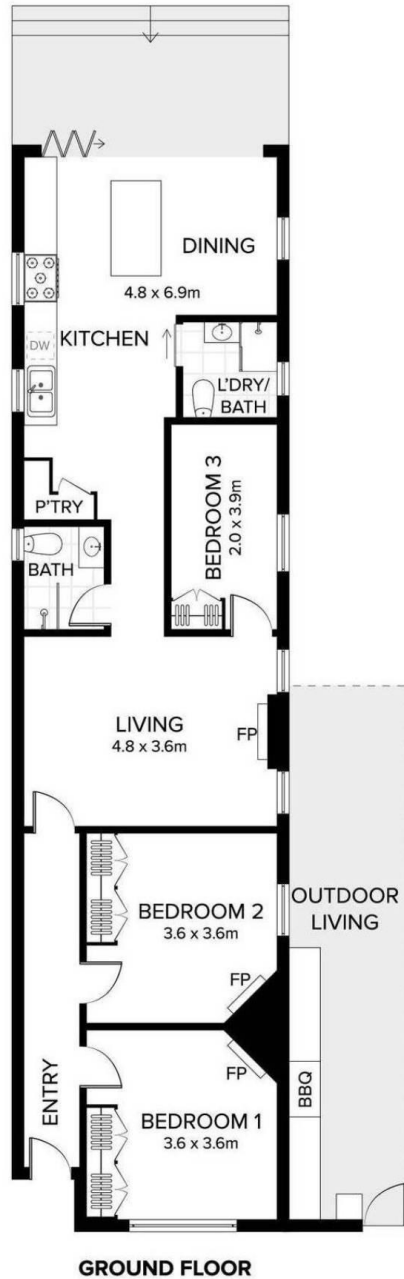
6/710 New South Head Road, ROSE BAY NSW 2029
doublebay.ljhooker.com.au | admin@ljhdouletbay.com



Disclaimer: All information contained therein is gathered from relevant third parties sources.
 We cannot guarantee or give any warranty about the information provided. Interested parties must rely solely on their own enquiries.

LJ Hooker Double Bay
(02) 9185 2816

132 BOTANY STREET KINGSFORD



DISCLAIMER: PLANS SHOWN ARE FOR PRESENTATION PURPOSES AND ARE NOT PART OF ANY LEGAL DOCUMENT. ALL MEASUREMENTS AND FIGURES ARE APPROXIMATE.