

Kilmore, 13 Colt Way

BIG family home

Brand new 4 bedroom family home on a BIG scale! This lovely home offers a huge master with walk in robe and ensuite, three additional bedrooms with built in robes, 2 additional lounge/play room areas, bright central bathroom, massive open plan kitchen with dishwasher and ample cupboard/bench space merging into the oversized lounge. Glass sliding doors open out to an undercover entertainment area and good sized back yard. Additionally offering heating/cooling, neutral tones throughout, 3 x 6 garden shed (to be erected end of Oct) and a double remote garage.

Located only minutes from the town center, shops, cafes and schools.
(NOTE - Instant turf to be laid shortly)



For Lease
Please Call

View
ljhooker.com.au/7T8HJS

Contact
Carla Balfe
0427 699 381
cbalfe.broadford@ljhooker.com.au



LJ Hooker Broadford | Kilmore
(03) 5784 2558

Disclaimer: All information contained therein is gathered from relevant third parties sources. We cannot guarantee or give any warranty about the information provided. Interested parties must rely solely on their own enquiries.

More About this Property

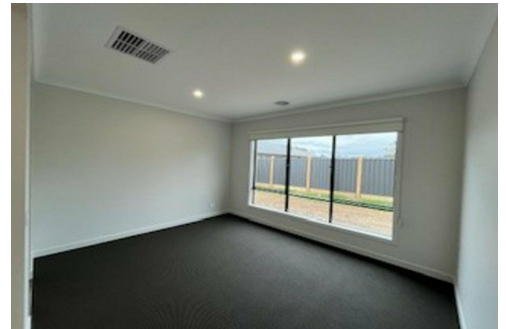
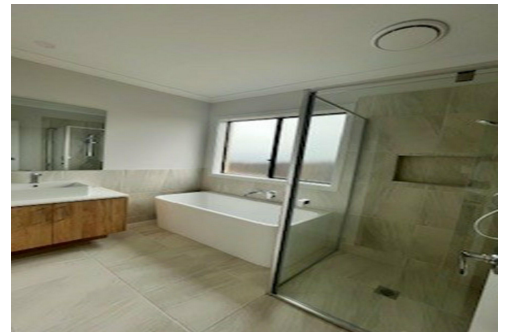
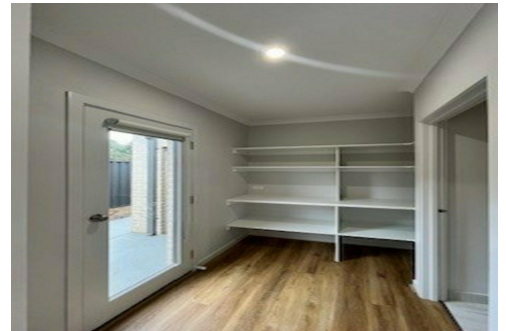
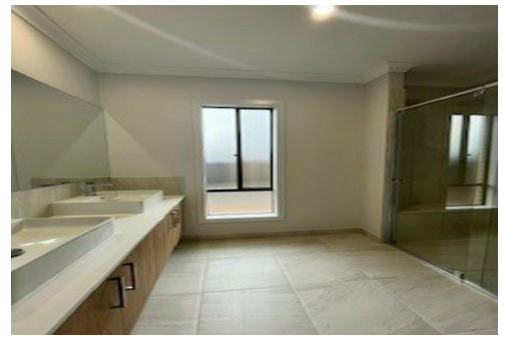
Property ID	7T8HJS
Property Type	House
Including	Ensuite Study Ducted Cooling Ducted Heating Dishwasher Outdoor Entertaining Floorboards Built-in-Robes Fully Fenced Remote Garage

Carla Balfe 0427 699 381

Property Investment Manager | cbalfe.broadford@ljhooker.com.au

LJ Hooker Broadford | Kilmore (03) 5784 2558

1629 Broadford Wandong Road, BROADFORD VIC 3658
broadford.ljhooker.com.au | broadford@ljhooker.com.au



**LJ Hooker Broadford | Kilmore
(03) 5784 2558**

Disclaimer: All information contained therein is gathered from relevant third parties sources. We cannot guarantee or give any warranty about the information provided. Interested parties must rely solely on their own enquiries.