



## Killarney Vale, 72 Brooke Avenue

Centrally Located 3-Bedroom Home with Extra Studio!

Privately set behind a front fence line and situated in a central location within a 250m walk to Brooke Avenue Public School, close to Bay Village Square and Killarney Vale shops; is this well presented three bedroom home with an oversized rear covered entertaining area!

Featuring:

- \* Separate lounge and dining areas.
- \* Kitchen with dishwasher and gas cooking that captures a nice outlook to the rear yard.
- \* Three bedrooms (Two with built in robes)
- \* Separate studio / storage area at rear - could be set up as a home office.
- \* Covered entertaining area with plenty of space for the whole family.

Outside you will find a generous fully fenced yard and plenty that would allow plenty of space for the kids to play.



**Disclaimer:** All information contained therein is gathered from relevant third parties sources. We cannot guarantee or give any warranty about the information provided. Interested parties must rely solely on their own enquiries.



**For Lease**  
\$690

**View**  
By Appointment

**Contact**  
**Mikayla Andrews**  
mikayla.andrews@ljhooker.com.au

**LJ Hooker Tumby Umbi | Killarney  
Vale | Bateau Bay  
(02) 4389 1722**

A single lock up garage plus extra of street parking completes the package.

Fantastic location:

Close to local shops, schools, beaches, cafes, and the scenic bike track. Just 10 minutes to Westfield Tuggerah and the M1 Freeway-making commuting a breeze.

IMPORTANT INFORMATION: Once arranged, open home times will be advertised online.

DISCLAIMER: This advertisement contains information provided by third parties. While all care is taken to ensure otherwise, LJ Hooker Tumbi Umbi 2261 does not make any representation as to the accuracy of the information contained in the advertisement, does not accept any responsibility or liability and recommends that any client make their own investigations and enquiries. All images are indicative of the property only. Please NOTE - NBN may not be compatible or available to the property and tenants are responsible to make their own enquiries.

## More About this Property

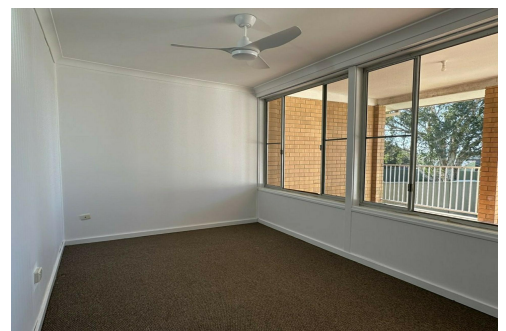
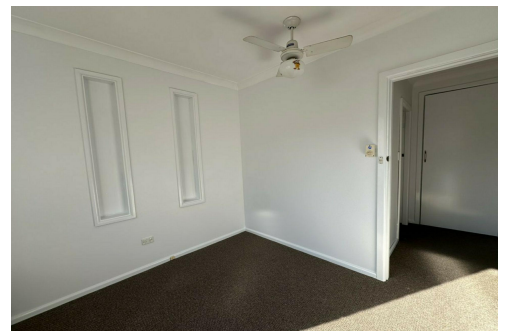
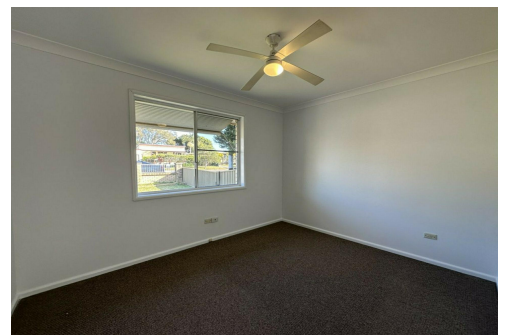
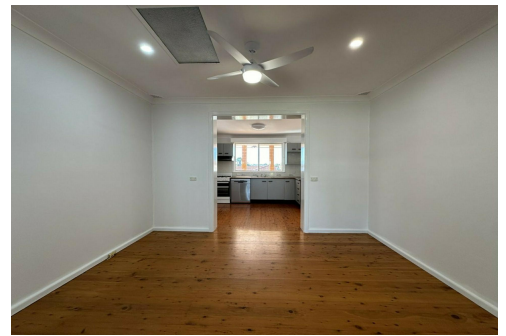
Property ID	WQSGJF
Property Type	House
Land Area	755 sqm

### Mikayla Andrews

Leasing Consultant | [mikayla.andrews@ljhooker.com.au](mailto:mikayla.andrews@ljhooker.com.au)

### LJ Hooker Tumbi Umbi | Killarney Vale | Bateau Bay (02) 4389 1722

Shop 2, 140 Wyong Road, KILLARNEY VALE NSW 2261  
[tumbiumbi.ljhooker.com.au](mailto:tumbiumbi.ljhooker.com.au) | [tumbiumbi@ljhooker.com.au](mailto:tumbiumbi@ljhooker.com.au)



**Disclaimer:** All information contained therein is gathered from relevant third parties sources. We cannot guarantee or give any warranty about the information provided. Interested parties must rely solely on their own enquiries.

**LJ Hooker Tumbi Umbi | Killarney  
Vale | Bateau Bay  
(02) 4389 1722**