



Killarney, 266 Acacia Plateau Road

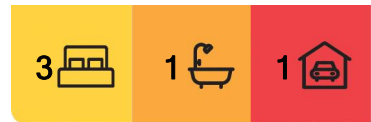
Family Home overlooking scenic valley Legume

Come home and unwind in this lovely family home set back high amongst the trees with valley views. Well designed open plan living with a generous master retreat complete with private balcony. Enjoy the spring breeze and in winter curl up in front of the fire with a hot beverage. This home has everything:

- 3 bedrooms,
- Spacious master with deck overlooking valley
- Open plan lounge and dining room with wood heater
- Spacious kitchen with gas cooking
- Beautiful bathroom with shower over bath, separate toilet
- Internal laundry
- Fully Fenced yard



Disclaimer: All information contained therein is gathered from relevant third parties sources. We cannot guarantee or give any warranty about the information provided. Interested parties must rely solely on their own enquiries.



For Lease

Please Call

View

ljhooker.com.au/9FUH85

Contact

Kristy Murphy

rent@ljhw.com.au

LJ Hooker Warwick
(07) 4661 8100

More About this Property

| | |
|----------------------|--|
| Property ID | 9FUH85 |
| Property Type | House |
| Including | Dishwasher Built-in-Robes Polished Concrete floors and tiles |

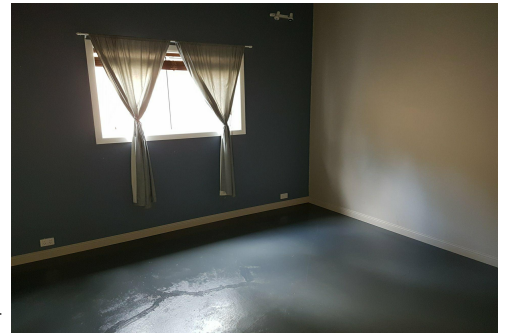
Kristy Murphy

Property Investment Manager | rent@ljhw.com.au

LJ Hooker Warwick (07) 4661 8100

81 Albion Street, WARWICK QLD 4370

warwick.ljhooker.com.au | office@ljhw.com.au



LJ Hooker Warwick
(07) 4661 8100

Disclaimer: All information contained therein is gathered from relevant third parties sources. We cannot guarantee or give any warranty about the information provided. Interested parties must rely solely on their own enquiries.