

Kensington, 149 Douglas Avenue

LOCATED HIGH ON THE HILL

This property sits this perfectly positioned character home . A picturesque blank canvas complete with city skyline views. The opportunities are endless.

Key Features:

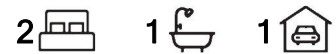
- * Elevated block positioned on the high side of the road
- * City skyline views
- * Character home
- * Complete with 2 bedrooms and polished floorboards throughout

Within 6km to Perth CBD, minutes to schools, shops, cafe strips and public transport . Do not miss the opportunity to secure this rare piece of earth complete with city skyline views and within minutes to Perth CBD.

- Sorry, no pets



Disclaimer: All information contained therein is gathered from relevant third parties sources. We cannot guarantee or give any warranty about the information provided. Interested parties must rely solely on their own enquiries.



For Lease

Please Call

View

ljhooker.com.au/5EAZFFB

**LJ Hooker Victoria Park | Belmont
(WA)
(08) 9473 7777**

- Unfurnished
- 6 or 12 months initial lease term

Would you like to inspect this property? Please register your details by requesting/booking an inspection. You will be sent details of available viewing times or be notified as soon as a time becomes available.

You must book/register for a specific viewing time, otherwise we will not be able to contact you should the viewing be cancelled, or the time changed.

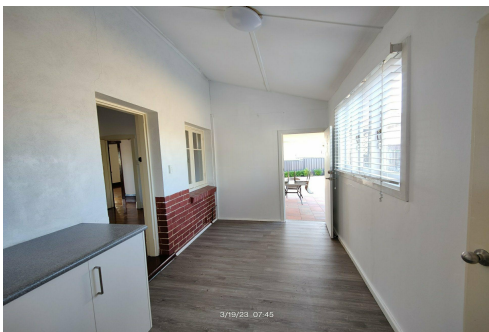
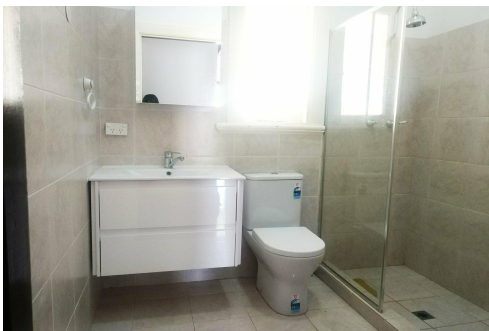
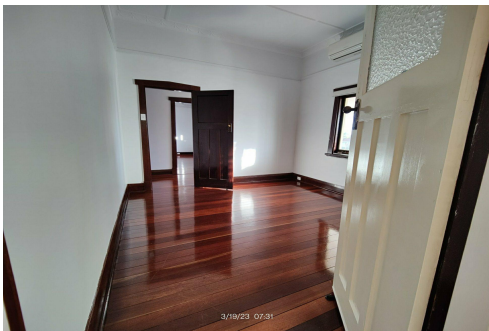
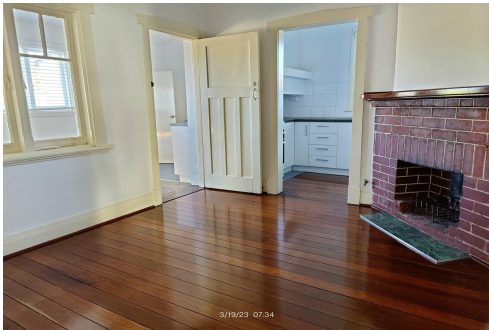
Alternatively, call our office on 08 9473 7777.

*** ARE YOU A LANDLORD? If you are looking for property management services, we would love to hear from you. Contact our Business Development Manager Barry on 0407 722 867 or barry@ljhvicpark.com.au for a no-obligation and confidential conversation.

More About this Property

Property ID	5EAZFFB
Property Type	House
Including	Floorboards

LJ Hooker Victoria Park | Belmont (WA) (08) 9473 7777
 288 Albany Highway, VICTORIA PARK WA 6100
victoriapark-belmontwa.ljhooker.com.au | reception@ljhvicpark.com.au



Disclaimer: All information contained therein is gathered from relevant third parties sources. We cannot guarantee or give any warranty about the information provided. Interested parties must rely solely on their own enquiries.

LJ Hooker Victoria Park | Belmont (WA) (08) 9473 7777