

Kedron, 12 Haines Street

UNBEATABLE LOCATION AND LAYOUT

Located just one street back from Kedron Brook bike way and parks is this near new, architecturally designed, spacious townhome is the ideal place to be starting the new year. With high ceilings to maximize air flow and natural light, this property is private, quiet and secure on a wide and leafy street.

Features Include;

- * Spacious kitchen with stone bench tops, dishwasher, quality stainless steel appliances plus mini butlers pantry and ample storage
- * Open plan living and dining
- * Study nook off living space
- * Three generous bedrooms, all carpeted with built in wardrobes and ceiling fans
- * Master bedroom with a modern ensuite and balcony
- * Large main bathroom with spacious shower and separate deep bath
- * Separate powder rooms; one up stairs and one downstairs



Disclaimer: All information contained therein is gathered from relevant third parties sources. We cannot guarantee or give any warranty about the information provided. Interested parties must rely solely on their own enquiries.

3

2

2

For Lease

\$745 per week

View

By Appointment

Contact

Bella Garside

office.aspley@ljhooker.com.au

LJ Hooker Aspley | Chermide
(07) 3263 6022

- * Covered outdoor entertaining area with minimal garden
- * Ducted air conditioning and heating with separate zones
- * Security screens and blinds throughout.
- * Remote controlled oversized garage with internal access

** Please note that rent will be \$695 per week initially and increase to \$745 per week as of 5/11/2024 **

Exceptionally positioned just 6km from the CBD, close to Kedron Brook bike way and bus station, and able to take full advantage of transport infrastructure, local cafes, shops, schools and park lands, this townhome is sure to impress and will be snapped up fast.

- * 300m to Coffee Shops
- * 300m to Pharmacy
- * 1km to Market Central Lutwyche Shopping Centre with Coles, Woolworths, Aldi and specialty retailers
- * 400m to Kedron State High School
- * 600m to Woolloowin State School
- * 700m to Kedron State School
- * 2.7km to Prince Charles Hospital
- * 200m to Bus Stop
- * 1.1km to Train Station
- * 2.3km to Bradbury Park

Would you like to view this property?

Go directly to <https://aspley.ljhooker.com.au> to register to inspect.

PLEASE NOTE, if you do not register online, we cannot notify you of any time changes or cancellations to inspections.

To apply please submit an online application via 2Apply at the following website - <https://www.2apply.com.au/login>

Alternatively, you can download and print our application by visiting our website - <https://aspley.ljhooker.com.au/renting/tenancy-application-form>

All information contained herein is gathered from sources we consider to be reliable. However, we cannot guarantee or give any warranty about the information provided. Interested parties must solely rely on their own enquiries.



LJ Hooker Aspley | Chermside
(07) 3263 6022

Disclaimer: All information contained therein is gathered from relevant third parties sources. We cannot guarantee or give any warranty about the information provided. Interested parties must rely solely on their own enquiries.

More About this Property

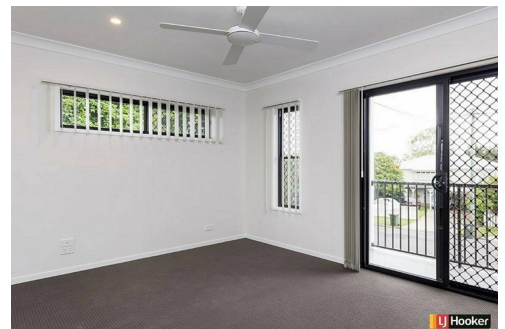
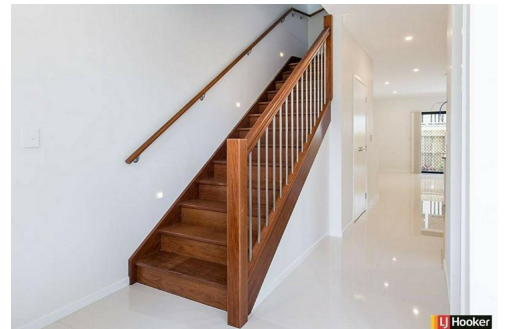
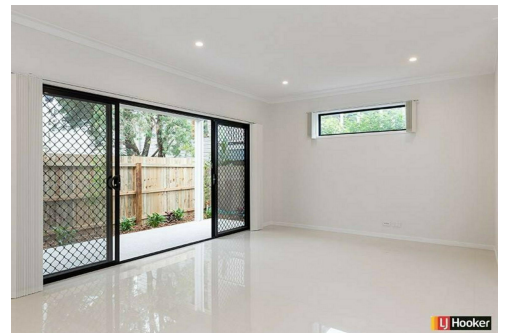
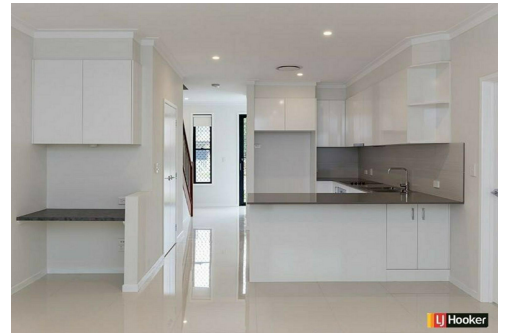
Property ID	38UHF1R
Property Type	House
Including	Ensuite Air Conditioning Toilets (3) Courtyard Balcony Dishwasher Outdoor Entertaining Built-in-Robes Secure Parking Fully Fenced

Bella Garside

Receptionist | office.aspley@ljhooker.com.au

LJ Hooker Aspley | Chermside (07) 3263 6022

1359 Gympie Road, ASPLEY QLD 4034
aspley.ljhooker.com.au | aspley@ljhooker.com.au



LJ Hooker Aspley | Chermside
(07) 3263 6022

Disclaimer: All information contained therein is gathered from relevant third parties sources.
We cannot guarantee or give any warranty about the information provided. Interested parties must rely solely on their own enquiries.

