



88 Windsor View Drive, Julatten

Charming Julatten Retreat Awaits You

Escape to a peaceful and private lifestyle in this spacious 3-bedroom, 2-bathroom home on Windsor View Drive, Julatten. All bedrooms are air-conditioned, providing comfort year-round, and the home features two doors opening onto a large outdoor deck, as well as open windows to take in the beautiful surrounding greenery. The property includes two paddocks, perfect for horses or a limited number of cattle, making it ideal for anyone seeking a rural lifestyle with plenty of outdoor space. This tranquil home offers the perfect combination of modern comfort and country living. Rent is \$700 per week without lawn maintenance or \$750 per week including lawn maintenance. Don't miss this opportunity to enjoy privacy, space, and serene Julatten living-contact us today to arrange an inspection.

Rent: (See below)

\$700 per week without lawn maintenance

\$750 per week with lawn maintenance included


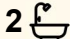

Bond: \$3,000

Available From: 25/03/2026

Term of Lease: 6 Months (Option to renew for 12 months)

IMPORTANT:

All information contained therein is gathered from relevant third parties sources. We cannot guarantee or give any warranty about the information provided. Interested parties must rely solely on their own enquiries.

3  2  4 

FOR RENT
\$750 per week

VIEW
By Appointment

AGENCY
LJ Hooker Atherton
(07) 4091 3144

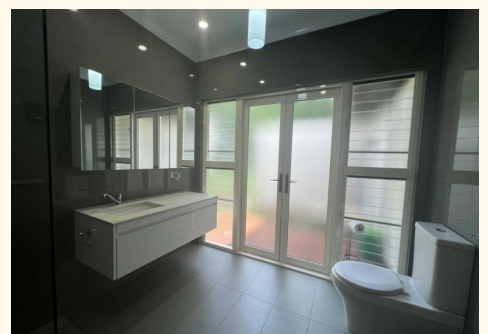
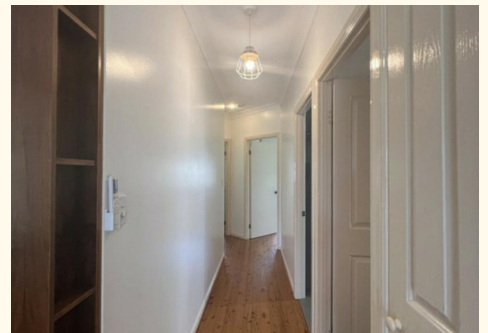
 **LJ Hooker**

Please note - an application must be submitted with the office and be approved by our property managers prior to being offered an opportunity to inspect the property.

MORE DETAILS

Property ID	SHWF1S
Property Type	House
Including	Air Conditioning Balcony

LJ Hooker Atherton (07) 4091 3144
10 Main Street, ATHERTON QLD 4883
atherton.ljhooker.com.au | atherton@ljhatherton.com



All information contained therein is gathered from relevant third parties sources.
We cannot guarantee or give any warranty about the information provided.
Interested parties must rely solely on their own enquiries.