



## Inverell, 6B Queens Terrace

### Tidy Duplex with River Views

- 3 bedroom home
- Bed 1 & 2 with built-in wardrobes
- Kitchen with dishwasher and gas stove
- Lounge room with reverse cycle air-conditioning
- Bathroom with shower and bath
- 2 toilets & internal laundry
- Downstairs studio with reverse cycle air-conditioning
- Covered outdoor deck
- Single lock-up garage with internal access
- Walking distance to town

Online applications are completed via SNUG  
(<https://app.snug.com/apply/ljhookerinverell>). For a paper version of the



**For Lease**

Please Call

**View**

[ljhooker.com.au/P0QH8U](http://ljhooker.com.au/P0QH8U)

**LJ Hooker Inverell**  
**(02) 6721 0215**

**Disclaimer:** All information contained therein is gathered from relevant third parties sources. We cannot guarantee or give any warranty about the information provided. Interested parties must rely solely on their own enquiries.

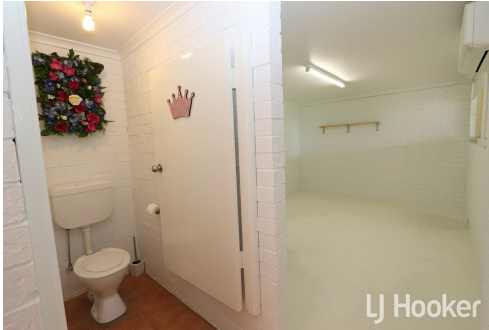
tenancy application please download and print it from our website. Please ensure all fields are completed, signed, and returned with all copies of your supporting documentation.

Disclaimer: All information contained is gathered from relevant third-party sources. We cannot guarantee or give any warranty about the information provided. Interested parties must rely solely on their own enquiries.

## More About this Property

Property ID	P0QH8U
Property Type	DuplexSemi-detached
Land Area	381 sqm
Including	Air Conditioning Built-in-Robes Carpeted City Views Close to Schools Close to Shops Close to Transport River Views

**LJ Hooker Inverell (02) 6721 0215**  
30-32 Otho Street, INVERELL NSW 2360  
[inverell.ljhooker.com.au](http://inverell.ljhooker.com.au) | [inverell@ljhooker.com.au](mailto:inverell@ljhooker.com.au)



**LJ Hooker Inverell**  
**(02) 6721 0215**

Disclaimer: All information contained therein is gathered from relevant third parties sources. We cannot guarantee or give any warranty about the information provided. Interested parties must rely solely on their own enquiries.