



## Indooroopilly, 10904/29 Finney Road

Just Simply Walk In...To your newly furnished home, 10904 at The Witton

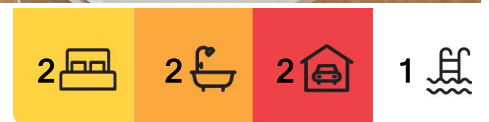
Indulge in Effortless Luxury. Curated by award winning developer Mosaic Group, you are invited to simply 'walk in' to your brand new, furnished unit 10 floors above the leafy, Greater Brisbane Suburb of Indooroopilly.

The fortunate tenant is welcomed to enjoy:

- Spectacular Rooftop Amenities: Infinity-edge pool, BBQ areas, gym, sun deck, and 360 deg; views of Brisbane City, and Mt Coot-tha.
- Prime Location: Just 350m to the Brisbane River, 150m to the Indooroopilly Shopping Centre, and less than 6km to the CBD.
- Designer Kitchen: Gourmet space with stone benchtops, Fisher & Paykel appliances, Westinghouse fridge, and integrated microwave and dishwasher.
- Spacious Living Areas: Open-plan living and dining, furnished with a wall-mounted SONY TV, flowing onto a large, covered balcony perfect for entertaining.



**Disclaimer:** All information contained therein is gathered from relevant third parties sources. We cannot guarantee or give any warranty about the information provided. Interested parties must rely solely on their own enquiries.



**For Lease**

\$840 per week partially furnished

**View**

By Appointment

**Contact**

**Josephine Elvin**

0457 000 897

joey.elvin@ljhookerproperty.com.au

**LJ Hooker Annerley | Yeronga | Salisbury**  
**(07) 3848 7369**

- Two Bedrooms, Two Bathrooms: Main bedroom with ensuite, mirrored built-in robes, balcony access, and stunning views.
- Multi-Purpose Room (MPR): Complete with built-in storage, desk, and Dyson vacuum cleaner - perfect for a home office or guest space.
- Convenience & Storage: Dedicated laundry area with washer and dryer, plus exclusive lockable storage on the unit's level.
- Secure Parking: Two allocated car spaces and multiple bike storage racks.
- Elite Education Nearby: Close to St Peters Lutheran College, Indooroopilly Primary and High School, and easy access to public transport (bus and train).
- Luxury Interiors: Beautifully appointed with high-end finishes, ducted air-conditioning, and interior designer touches.
- Curated by Mosaic: Renowned for delivering award-winning, architecturally stunning, and flawlessly finished developments.

#### BOOK AN INSPECTION ONLINE - ITS EASY!

Click on the · Book Inspection· or · Request an Inspection· Button under the open for inspections times

· · · By registering for an inspection, you will be INSTANTLY informed of any updates, changes or cancellations for your property appointment. If no one registers for an inspection time - then that inspection may not proceed. If there are no times set for this property yet, STILL REGISTER and as soon as times are set, you will be advised of the day and time · · · ·

TO APPLY for this rental property please go direct to our website (below) or contact our office on 07 3848 7369. <https://annerleyyeronga.ljhooker.com.au/search/property-for-rent/page-1>

Disclaimer: Whilst every care is taken in the preparation of the information contained herein, we will not be held liable for any errors in typing or information. All information is considered correct at the time of writing and any interested parties should satisfy themselves in this respect.



**LJ Hooker Annerley | Yeronga |  
Salisbury  
(07) 3848 7369**

**Disclaimer:** All information contained therein is gathered from relevant third parties sources. We cannot guarantee or give any warranty about the information provided. Interested parties must rely solely on their own enquiries.



## More About this Property

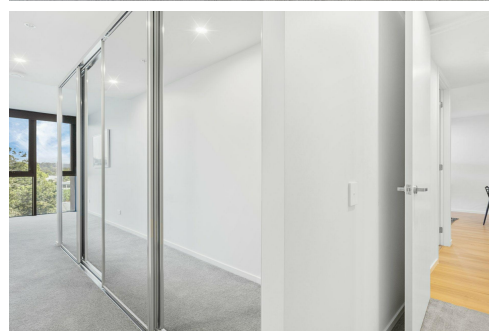
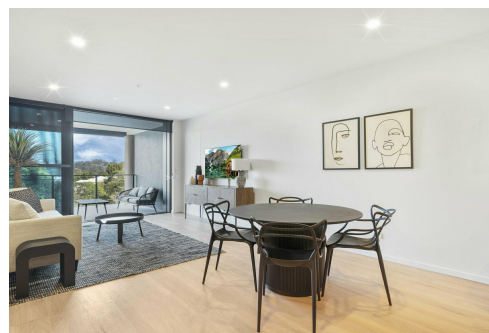
Property ID	1E1NH31
Property Type	Unit
Including	Ensuite Study Air Conditioning Ducted Cooling Ducted Heating Intercom Pool Balcony Gym Dishwasher Outdoor Entertaining Floorboards Built-in-Robes

**Josephine Elvin 0457 000 897**

Property Manager & New Business Manager | Sales Associate to Jane Elvin |  
joey.elvin@ljhookerproperty.com.au

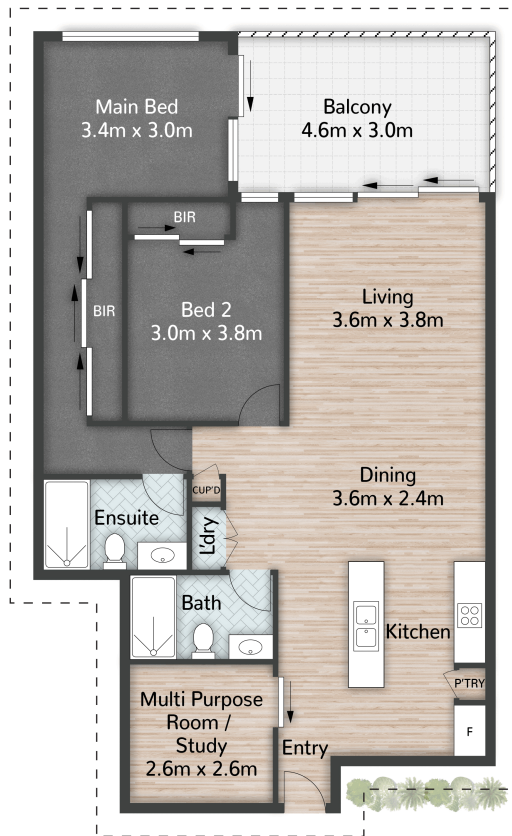
**LJ Hooker Annerley | Yeronga | Salisbury (07) 3848 7369**

443 Ipswich Road, ANNERLEY QLD 4103  
annerleyyeronga.ljhooker.com.au | admin@ljhookerproperty.com.au



**Disclaimer:** All information contained therein is gathered from relevant third parties sources.  
We cannot guarantee or give any warranty about the information provided. Interested parties must rely solely on their own enquiries.

**LJ Hooker Annerley | Yeronga |  
Salisbury  
(07) 3848 7369**



10904/29 Finney Road INDOOROOPIILY

2 | 2 | 2 | 99m<sup>2</sup>

**LJ Hooker**

All dimensions are approximate; they are subject to errors and inaccuracies and no liability will be accepted. Plans are shown for marketing purposes only.

**LJ Hooker**

**Disclaimer:** All information contained therein is gathered from relevant third parties sources. We cannot guarantee or give any warranty about the information provided. Interested parties must rely solely on their own enquiries.

**LJ Hooker Annerley | Yeronga |  
Salisbury  
(07) 3848 7369**