

## Hope Valley, 45 Berri Road

### Spacious Family Living



TO REGISTER AND INSPECT THIS PROPERTY VISIT: <https://tenantoptions.com.au/>

\*\* Only applicants who have inspected the property will be considered \*\*

Discover a cozy and inviting 3-bedroom home perfect for your family! This charming house features spacious rooms and modern amenities, providing comfort and convenience. Located in a desirable neighbourhood, this home offers a peaceful retreat with easy access to schools and parks. Make lasting memories in this lovely 3-bedroom home - your ideal sanctuary for a bright future.

Features you will love:

- \* Kitchen with lots storage and dishwasher
- \* Three bedrooms all with built-in-robos
- \* Ducted reverse cycle heating and cooling, plus gas heater
- \* Solar panels to reduce nasty electricity bills



**Disclaimer:** All information contained therein is gathered from relevant third parties sources. We cannot guarantee or give any warranty about the information provided. Interested parties must rely solely on their own enquiries.

**For Lease**

\$495 p/week

**View**

By Appointment

**Contact**

**Chloe Durdin**

[chloed@ljhpropertymanagement.com.au](mailto:chloed@ljhpropertymanagement.com.au)

**LJ Hooker Greenwith | Golden Grove  
| Mawson Lakes | Modbury  
(08) 8289 6660**

- \* Carport with auto roller door
- \* Roller Shutters for added security

Consider the great location, it's perfectly located in the popular area of Hope Valley, less than 30 minutes from the Adelaide CBD, and just a short stroll to local shops, school, parks and public transport. Don't miss the chance to come and inspect, it ticks so many boxes!

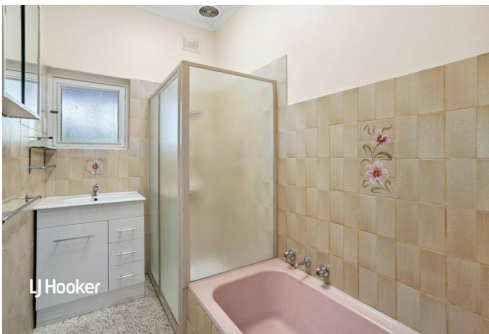
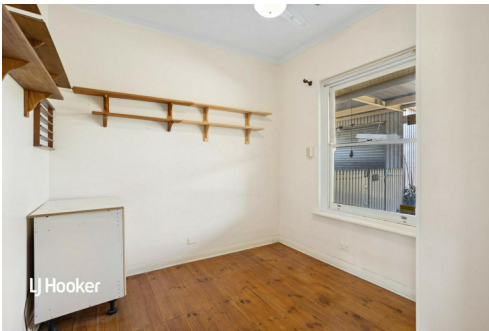
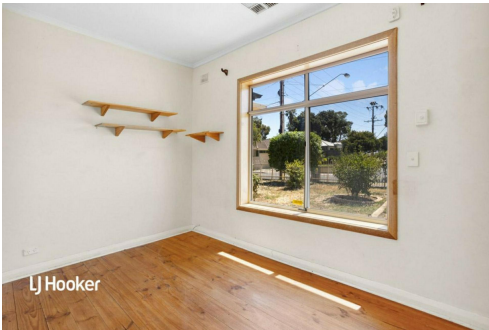
Please contact us during office hours on 8289 6660 (Monday-Friday 9am-5.30pm) if you have any queries regarding the application process. If your queries relate to an open inspection time, please be advised that all open times are updated every Friday by close of business. If you are unable to attend the open inspection or there are no open times scheduled, please send your enquiry through this website.  
 RLA 208516

## More About this Property

Property ID	2B2GGJU
Property Type	House
Land Area	740 sqm

**Chloe Durdin**  
 Property Investment Manager | [chloed@ljhpropertymanagement.com.au](mailto:chloed@ljhpropertymanagement.com.au)

**LJ Hooker Greenwith | Golden Grove | Mawson Lakes | Modbury (08) 8289 6660**  
 North East, Shop 2, 1007 North East Road, RIDGEHAVEN SA 5097  
[greenwithgoldengrove.ljhooker.com.au](http://greenwithgoldengrove.ljhooker.com.au) | [info@ljhsupport.com.au](mailto:info@ljhsupport.com.au)



**Disclaimer:** All information contained therein is gathered from relevant third parties sources. We cannot guarantee or give any warranty about the information provided. Interested parties must rely solely on their own enquiries.

**LJ Hooker Greenwith | Golden Grove  
 | Mawson Lakes | Modbury  
 (08) 8289 6660**