

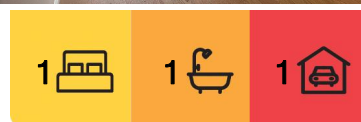
## Highett, 109/1090 Nepean Highway

### BRAND NEW - 1 BEDROOM APARTMENT IN THE HEART OF HIGHETT!

This brand new modern "Neue" apartment is located in a sought after location a short walk from The Highett Road Village and Shopping Centre, giving you a vibrant local community and everything you need within easy reach.

The apartment consists of security entrance, fully equipped contemporary kitchen including gas cooking and dishwasher, open plan living and dining with access to terrace balcony, good sized bedroom with large built-in robe and study nook and modern tiled bathroom with shower.

Other features include two split system aircons, unique triple glazed windows, floorboards in living area, carpeted bedroom, NBN connection, secure off street parking for one car and storage cage.



**For Lease**  
\$500pw | \$2,173pcm

**View**  
By Appointment

**Contact**  
**Monika Papdan**  
03 9702 8388  
monika.papdan@ljhcasey.com.au



**Disclaimer:** All information contained therein is gathered from relevant third parties sources. We cannot guarantee or give any warranty about the information provided. Interested parties must rely solely on their own enquiries.

**LJ Hooker Hampton Park**  
**(03) 9702 8388**

All this is located within two minutes walk to train station and a short drive to Southland Westfield Shopping Centre, central park, gyms and other local amenities. Don't miss out!

RENT PER CALENDAR MONTH = \$2,173.00

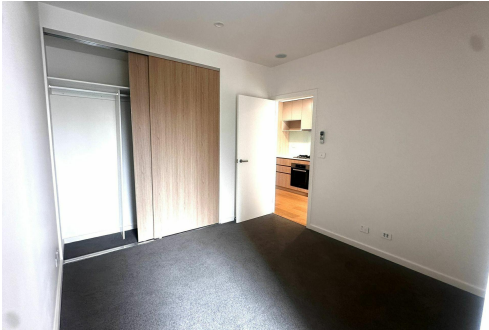
BOND = \$2,173.00

## More About this Property

Property ID	47WTWFHE
Property Type	Apartment
Including	Air Conditioning Built-in-Robes Carpeted Close to Shops Close to Transport

**Monika Papdan 03 9702 8388**  
Business Development Manager | [monika.papdan@ljhcasey.com.au](mailto:monika.papdan@ljhcasey.com.au)

**LJ Hooker Hampton Park (03) 9702 8388**  
Shop 20, Hampton Park Shopping Centre, 166 Somerville Road, HAMPTON PARK VIC 3976  
[hamptonpark.ljhooker.com.au](http://hamptonpark.ljhooker.com.au) | [john.deo@ljhcasey.com.au](mailto:john.deo@ljhcasey.com.au)



**Disclaimer:** All information contained therein is gathered from relevant third parties sources. We cannot guarantee or give any warranty about the information provided. Interested parties must rely solely on their own enquiries.

**LJ Hooker Hampton Park**  
**(03) 9702 8388**