

## Herston, 1/46 Bramston Terrace

### INNER CITY TWO BEDROOM HALF HOUSE (TOP FLOOR ONLY)

Modernised top floor living in a very convenient location - just minutes from public transport, shops and schools!

Features you'll love:

- HUGE open plan living and dining areas with polished floors
- Big entertainers deck
- Great large modern kitchen with dishwasher
- Two big bedrooms with AIR CON & wardrobes
- Modern bathroom with shower and bath facilities
- Single car accommodation off street (left hand side park)
- Electricity, water & gas invoiced directly at fixed cost of \$150 per month

**\*\* PLEASE READ CAREFULLY \*\***



**Disclaimer:** All information contained therein is gathered from relevant third parties sources. We cannot guarantee or give any warranty about the information provided. Interested parties must rely solely on their own enquiries.



**For Lease**  
\$610 p/wk

**View**  
By Appointment

**LJ Hooker Stafford**  
(07) 3357 1888

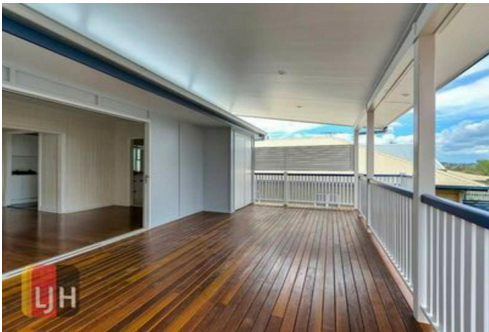


- \* To apply online copy & paste this link in your browser  
<https://applyonlineljhookerstafford.com.au/>. We do not accept 1Form applications.
- \* To arrange an inspection click GET IN TOUCH and submit your details, we will reply with inspection information.
- \* Open Homes are usually on Saturdays and the time will be published as soon as it is confirmed. There is no need to register, simply be there at the start time listed.
- \* In preparing this information, we have used our best endeavours to ensure that the information is true and accurate however we accept no responsibility and disclaim all liability in respect of any errors, inaccuracies, or misstatements. Prospective tenants should make their own inquiries to verify the information provided which is provided as a convenience to clients.

## More About this Property

Property ID	1CV0F4N
Property Type	Apartment
Including	Air Conditioning Balcony Deck Dishwasher Outdoor Entertaining Built-in-Robes

**LJ Hooker Stafford (07) 3357 1888**  
 205 Stafford Road, STAFFORD QLD 4053  
[stafford.ljhooker.com.au](mailto:stafford.ljhooker.com.au) | [stafford@ljhooker.com.au](mailto:stafford@ljhooker.com.au)



**Disclaimer:** All information contained therein is gathered from relevant third parties sources. We cannot guarantee or give any warranty about the information provided. Interested parties must rely solely on their own enquiries.

**LJ Hooker Stafford**  
**(07) 3357 1888**



LOWER LEVEL



UPPER LEVEL

APPROX GROSS INTERNAL AREA 170 sqm

APPROX GROSS TOTAL AREA 227 sqm

Copyright © www.primepixels.com.au

Whilst every attempt has been made to ensure the accuracy of the floor plans contained here, measurements of doors, windows, rooms and any other items are approximate and no responsibility is taken for any error, omission or misstatement. These plans are for representation purposes only.



46 BRAMSTON TCE, WINDSOR