

## Helensvale, 24/26 Careel Close

### Comfortability & Convenience Meet!

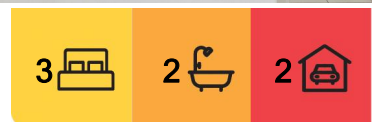
Step into comfort and convenience with this stylish and spacious home, featuring an open-plan living and dining area complete with ceiling fans and split system air conditioning for year-round comfort. The modern kitchen boasts quality Westinghouse appliances, including a dishwasher, while the upstairs study nook offers the perfect work-from-home space. The master bedroom impresses with a walk-in robe, ensuite, and private balcony, complemented by two additional bedrooms with built-in robes. Enjoy a full-sized main bathroom with a bathtub, a handy downstairs powder room, and a low-maintenance fully fenced yard with an undercover patio-ideal for relaxing or entertaining. With a single remote-access garage plus an additional carport, this home combines modern living with everyday practicality.

#### Property Features:

- Spacious Living & Dining Area
- Ceiling fans throughout



**Disclaimer:** All information contained therein is gathered from relevant third parties sources. We cannot guarantee or give any warranty about the information provided. Interested parties must rely solely on their own enquiries.



**For Lease**  
Please Call

**View**  
[ljhooker.com.au/35J9GMK](http://ljhooker.com.au/35J9GMK)

**Contact**  
**Kirsty Wheatley**  
07 5573 7218  
[kwheatley@ljhteam.com.au](mailto:kwheatley@ljhteam.com.au)

**LJ Hooker Pacific Pines | Helensvale**  
**(07) 5573 2099**

- Split system air conditioning in living area & master bedroom
- Master bedroom w/ walk-in-robe, ensuite & balcony
- Two additional bedrooms with built-in-robos
- Modern kitchen w/ Westinghouse appliances (inc dishwasher)
- Upstairs study nook
- Main bathroom w/ bathtub
- Downstairs powder room
- Low maintenance fully fenced yard w/ undercover patio
- Single remote access garage + additional carport

Located in the heart of the northern Gold Coast, Helensvale is a vibrant, family-friendly suburb that perfectly balances lifestyle, convenience, and connectivity. Known for its leafy streets, quality schools, and abundant parklands, Helensvale offers easy access to major shopping centres like Westfield Helensvale, a variety of dining and entertainment options, and excellent public transport, including the G:link light rail and train station. Just a short drive to the stunning Gold Coast beaches, theme parks, and the M1 motorway, Helensvale is ideal for families, professionals, and retirees seeking a relaxed yet well-connected community atmosphere.

**\*\*ARRANGE AN INSPECTION TIME ONLINE\*\***

By registering, you will be INSTANTLY informed of any updates, changes or cancellations for your appointment. Please be aware that even though you may be booked in for an inspection, it does sometimes occur that the property may be leased prior to the time and date you have been given. If that occurs you will receive a text informing you of the cancellation.

Please view the photos and any visual aids you can access thoroughly to ensure that this is a home you are very interested in before registering. Viewings are limited

\* Disclaimer: In preparing this information LJ Hooker has used its best endeavours to ensure that the information contained herein is true and accurate, but accept no responsibility and disclaim all liability in respect of any errors, omissions, inaccuracies or misstatements that may occur. Prospective tenants and buyers should make their own enquiries to verify the information contained herein.

Photos used in advertising may differ from the current state of the property. We endeavour to use the most up to date photography, however this may not be feasible to protect our current tenants' privacy. Photos may include the use of virtual furniture.



**LJ Hooker Pacific Pines | Helensvale**  
**(07) 5573 2099**

**Disclaimer:** All information contained therein is gathered from relevant third parties sources. We cannot guarantee or give any warranty about the information provided. Interested parties must rely solely on their own enquiries.

## More About this Property

<b>Property ID</b>	35J9GMK
<b>Property Type</b>	Townhouse
<b>Land Area</b>	168 sqm
<b>Including</b>	Ensuite Air Conditioning Toilets (2) Courtyard Balcony Dishwasher Fully Fenced

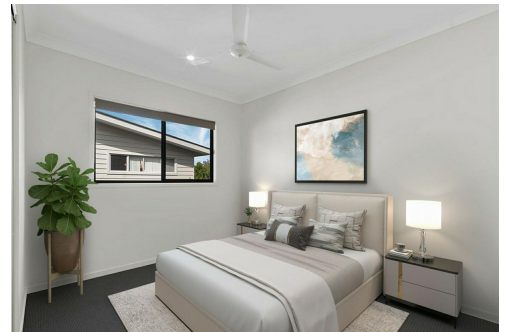
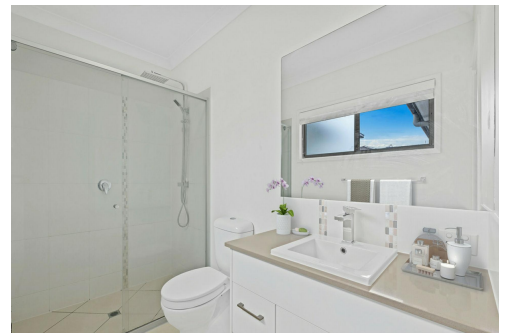
**Kirsty Wheatley 07 5573 7218**

Property Investor Manager | [kwheatley@ljhteam.com.au](mailto:kwheatley@ljhteam.com.au)

**LJ Hooker Pacific Pines | Helensvale (07) 5573 2099**

8 Discovery Drive, HELENSVALE QLD 4212

[pacificpines-helensvale.ljhooker.com.au](http://pacificpines-helensvale.ljhooker.com.au) | [admin@ljhteam.com.au](mailto:admin@ljhteam.com.au)



**Disclaimer:** All information contained therein is gathered from relevant third parties sources.  
We cannot guarantee or give any warranty about the information provided. Interested parties must rely solely on their own enquiries.

**LJ Hooker Pacific Pines | Helensvale  
(07) 5573 2099**

