

Helensvale, 9 Coen Place

FAMILY HOME NESTLED IN TRANQUIL BUSH SETTING

Welcome to your peaceful oasis in the heart of nature! This immaculate 4-bedroom home offers a perfect blend of comfort and serenity.

Features include:

- 4 spacious bedrooms
- Master Bedroom with ensuite
- Modern kitchen
- 3 other good-sized bedrooms with built in robes
- Huge undercover outdoor entertaining space
- Seperate toilet
- Undercover carport perfect for cars or boats
- Solar panels
- Fully fenced yard



Disclaimer: All information contained therein is gathered from relevant third parties sources. We cannot guarantee or give any warranty about the information provided. Interested parties must rely solely on their own enquiries.

4

2

1

For Lease
Please Call

View
ljhooker.com.au/358DGMK

Contact
Amanda Morgan
0466 485 005
amorgan@ljhteam.com.au

LJ Hooker Pacific Pines | Helensvale
(07) 5573 2099

- Ceiling fans throughout

Situated in a quiet street, central to local primary and high schools, Westfield Shopping Centre, Golf Course and public transport. The M1 is just a few minutes drive away. Tenants to pay full water consumption costs.

PLEASE NOTE: WE ONLY ACCEPT 2APPLY APPLICATIONS (ONLINE)

****ARRANGE AN INSPECTION TIME ONLINE****

By registering, you will be INSTANTLY informed of any updates, changes or cancellations for your appointment. Please be aware that even though you may be booked in for an inspection, it does sometimes occur that the property may be leased prior to the time and date you have been given. If that occurs you will receive a text informing you of the cancellation. Please view the photos and any visual aids you can access thoroughly to ensure that this is a home you are very interested in before registering. Viewings are limited

* Disclaimer: In preparing this information LJ Hooker has used its best endeavours to ensure that the information contained herein is true and accurate, but accept no responsibility and disclaim all liability in respect of any errors, omissions, inaccuracies or misstatements that may occur. Prospective tenants and buyers should make their own enquiries to verify the information contained herein.

Photos used in advertising may differ from the current state of the property. We endeavour to use the most up to date photography, however this may not be feasible to protect our current tenants' privacy. Photos may include the use of virtual furniture.

More About this Property

Property ID	358DGMK
Property Type	House
Land Area	711 sqm
Including	Air Conditioning Dishwasher Outdoor Entertaining Built-in-Robes Fully Fenced

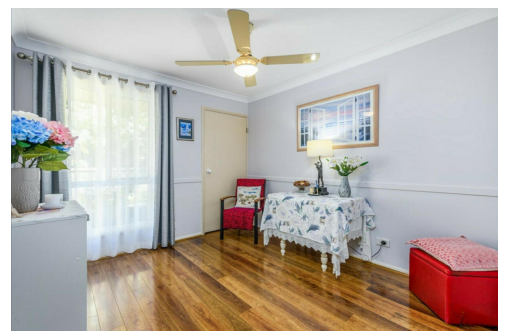
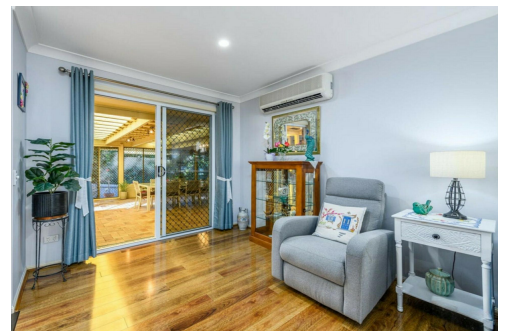
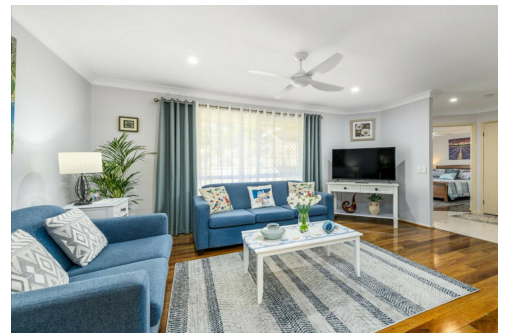
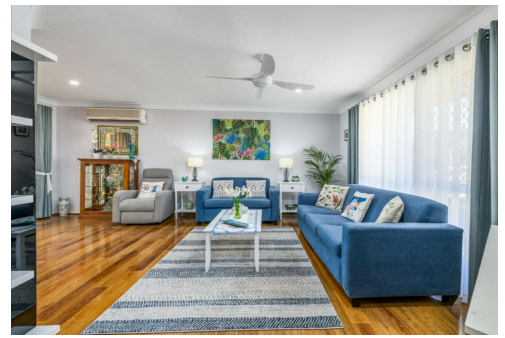
Amanda Morgan 0466 485 005

Property Investment Manager | amorgan@ljhteam.com.au

LJ Hooker Pacific Pines | Helensvale (07) 5573 2099

8 Discovery Drive, HELENSVALE QLD 4212

pacificpines-helensvale.ljhooker.com.au | admin@ljhteam.com.au



Disclaimer: All information contained therein is gathered from relevant third parties sources. We cannot guarantee or give any warranty about the information provided. Interested parties must rely solely on their own enquiries.

**LJ Hooker Pacific Pines | Helensvale
(07) 5573 2099**



 LJ Hooker