

Hampton Park, 4 Jambe Court

BRAND NEW GROUND FLOOR TOWNHOUSE FOR RENT IN HAMPTON PARK - \$550/WEEK (BILLS INCLUDED)

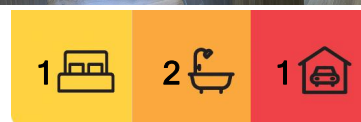
Looking for a modern and convenient place to call home? This brand new ground-floor townhouse is perfect for a single person, couple, or small family, offering exclusive access with no sharing. Located right in front of a bus stop and just a 3-minute drive to Hallam train station and Hampton Park shopping centre, including Woolworths.

Property Features:

- 1 Bedroom with Ensuite
- Spacious Lounge: Complete with a wall-mounted 75-inch Smart TV.
- Modern Kitchen & Dining Area
- 2 Reverse Cycle Air Conditioners: For heating and cooling, ensuring year-round comfort.
- 2 Toilets & 1 Bathroom
- Garage for Secure Parking



Disclaimer: All information contained therein is gathered from relevant third parties sources. We cannot guarantee or give any warranty about the information provided. Interested parties must rely solely on their own enquiries.



For Lease

\$550pw inc Utilities

View

By Appointment

Contact

Olivia Ferguson

03 9702 8388

olivia.ferguson@ljhcasey.com.au

LJ Hooker Hampton Park
(03) 9702 8388

- Hisense 424L Stainless Steel Fridge
- Coin Operated Laundry

Bills Included: Water, gas, and electricity are all covered in the rent, making it easy to budget.

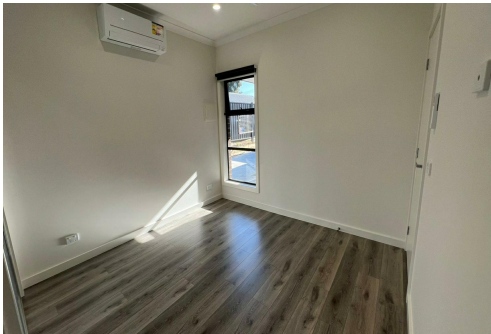
This is a rare opportunity for a hassle-free, fully-equipped living space in a great location. Contact us today to arrange an inspection!

More About this Property

Property ID	47WR1FHE
Property Type	Unit
Including	Ensuite

Olivia Ferguson 03 9702 8388
Property Manager | olivia.ferguson@ljhcasey.com.au

LJ Hooker Hampton Park (03) 9702 8388
Shop 20, Hampton Park Shopping Centre, 166 Somerville Road, HAMPTON PARK VIC 3976
hamptonpark.ljhooker.com.au | john.deo@ljhcasey.com.au



Disclaimer: All information contained therein is gathered from relevant third parties sources. We cannot guarantee or give any warranty about the information provided. Interested parties must rely solely on their own enquiries.

LJ Hooker Hampton Park
(03) 9702 8388