

LEASED



Halfway Bush, 156 Ashmore Street

Modern on Ashmore

TO VIEW: Please register in Trademe for the set viewing time and day.

Positioned to the sun and modernised throughout, this lovely three bedroom home is a great spot to come to at the end of the day. Located in the popular Halfway Bush, close to local schools, public transport and an easy commute down the hill to town.

The open plan living, dining and kitchen area is perfect to rest and entertain in. The modern kitchen has plenty of bench space and the sun shines into these areas. The three bedrooms are all spacious and the modernised bathroom completes the internal areas of this home. Outside you will find a great section, ample off street car parking and an easy care garden.

3 

1 

0 

For Lease

Please Call

View

ljhooker.co.nz/3MC8GDS

Contact

Nathan Dickson

027 214 7265

nathan@ljhdunedin.co.nz

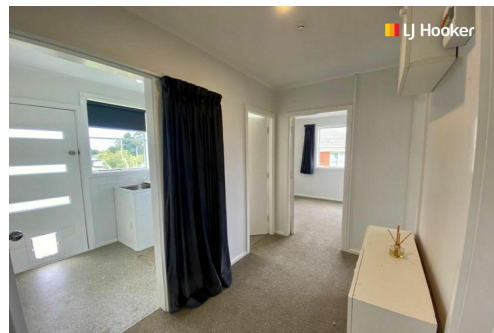
- Modernised decor
- Lovely kitchen
- Sunny throughout
- Three bedrooms
- Modernised bathroom
- Ample off street carparking
- Good location close to schools and public transport

More About this Property

Property ID	3MC8GDS
Property Type	House
Land Area	707 sqm
Licensed Real Estate Agents (REAA2008)	

Nathan Dickson
Leasing Agent | nathan@ljhdunedin.co.nz

LJ Hooker Dunedin (03) 470 1370
Wayne Graham Realty Ltd
63 Musselburgh Rise, DUNEDIN 9013
dunedin.ljhooker.co.nz | dunedin@ljhdunedin.co.nz



Disclaimer: All information contained therein is gathered from relevant third parties sources. We cannot guarantee or give any warranty about the information provided. Interested parties must rely solely on their own enquiries.

LJ Hooker Dunedin
(03) 470 1370
Wayne Graham Realty Ltd