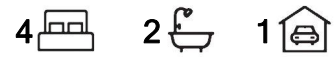


Gulfview Heights, 26 Cuthbert Avenue

Perfect Family Home



TO REGISTER AND INSPECT THIS PROPERTY VISIT: <https://tenantoptions.com.au/>

** Only applicants who have inspected the property will be considered **

This gorgeous 4-bedroom family home is both open and spacious, light and bright with floating timber flooring throughout, and offers a stylish outdoor entertaining area perfect for family gatherings, or a place for teenage children to enjoy with friends. With two generous living areas this is perfect for those looking for a little extra space to relax and unwind.

Features include:

- 4 bedrooms, master with ensuite bathroom and built-in robe
- Bedrooms 2 and 3 with built-in robes
- Spacious front lounge and dining room with bay window, plantation shutters, and gas wall heater
- Modern kitchen with gas cooktop, oven, dishwasher, cupboard pantry and adjacent



Disclaimer: All information contained therein is gathered from relevant third parties sources. We cannot guarantee or give any warranty about the information provided. Interested parties must rely solely on their own enquiries.

For Lease
Please Call

View
ljhooker.com.au/2B6XGJU

Contact
Chloe Durdin
chloed@ljhpropertymanagement.com.au

**LJ Hooker Greenwith | Golden Grove
| Mawson Lakes | Modbury
(08) 8289 6660**

laundry

- Ducted evaporative cooling with split air conditioning wall unit in the main family room providing both heating and cooling options
- Large elevated deck entertaining area with pitch roof pergola
- Bali hut with spa overlooking the rear yard
- Large rear yard
- Single carport with space for a second or third vehicle on the driveway
- 8 Solar panels saving you \$\$ on your electricity bills

With a reserve over the road the children in the family will always be outdoors enjoying their surroundings. Just moments to nearby schools, shops and easy access to Bridge Road and Main North Road making commuting to the Adelaide CBD a breeze. A family-friendly location and a great place to call home!

Please contact us during office hours on 8289 6660 (Monday-Friday 9am-5.30pm) if you have any queries regarding the application process. If your queries relate to an open inspection time, please be advised that all open times are updated every Friday by close of business. If you are unable to attend the open inspection or there are no open times scheduled, please send your enquiry through this website.

RLA 208516

More About this Property

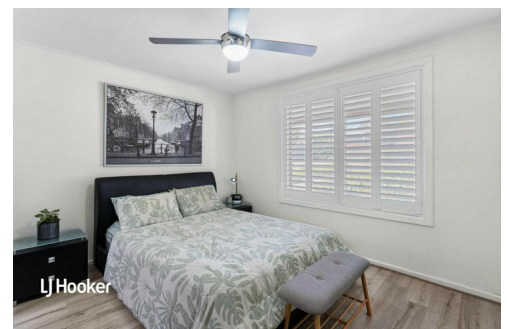
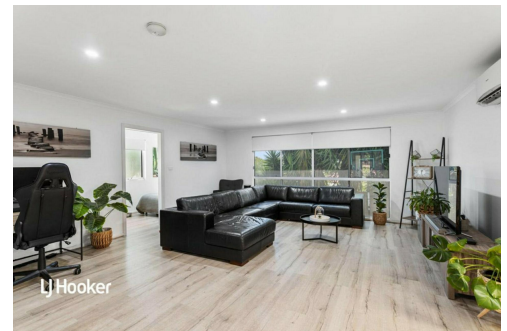
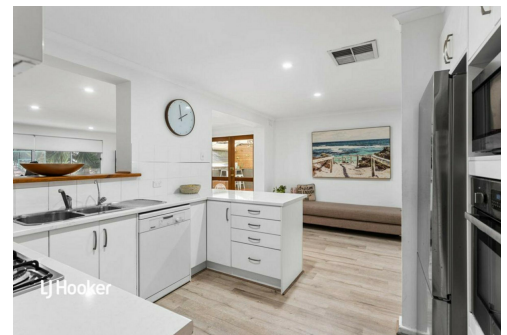
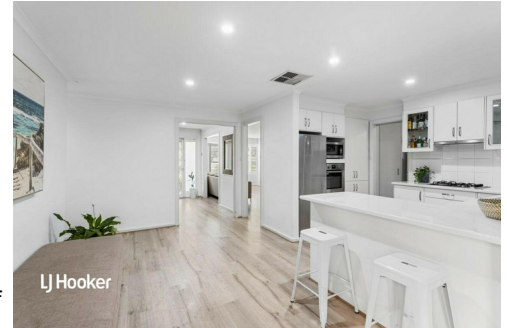
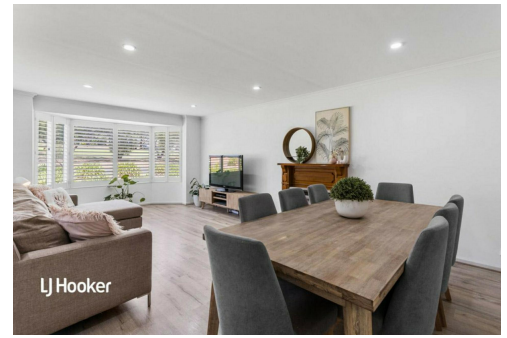
Property ID	2B6XGJU
Property Type	House
Land Area	600 sqm

Chloe Durdin

Property Investment Manager | chloed@ljhpropertymanagement.com.au

LJ Hooker Greenwith | Golden Grove | Mawson Lakes | Modbury (08) 8289 6660

North East, Shop 2, 1007 North East Road, RIDGEHAVEN SA 5097
greenwithgoldengrove.ljhooker.com.au | info@ljhsupport.com.au



Disclaimer: All information contained therein is gathered from relevant third parties sources. We cannot guarantee or give any warranty about the information provided. Interested parties must rely solely on their own enquiries.

**LJ Hooker Greenwith | Golden Grove
| Mawson Lakes | Modbury
(08) 8289 6660**