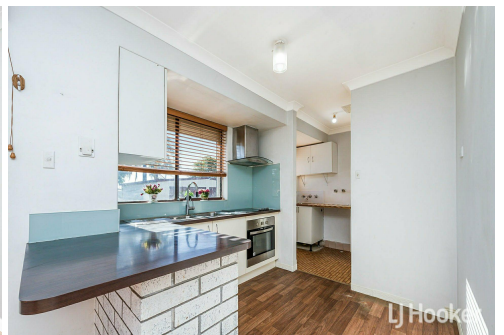
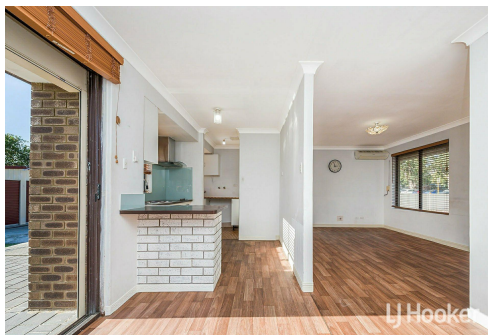


LEASED



Gosnells, 153 Verna Street

Family Home

3  1  1 

This well maintained 3 bedroom, 1 bathroom home is located close to Seaforth Primary School, Corfield Fresh IGA, Seaforth train station, and Southern River College.

With plenty of public parks nearby and excellent public transportation options.

Features:

The living room is equipped with a split system air conditioner.

The kitchen / dining boasts an electric cooktop, a double sink, and ample cupboard space.

The bathroom is well-appointed with both a bathtub and shower.

Each of the three bedrooms features carpet flooring and split system air conditioning.

Drive through drive access to workshop (not powered).

The front and backyard are both low maintenance.

Please register for the Home Opens.

For Lease
Please Call

View
ljhooker.com.au/8UAHA2

Contact
Louise Frisina
0433 322 980
louise.frisina@ljhooker.com.au



Disclaimer: All information contained therein is gathered from relevant third parties sources. We cannot guarantee or give any warranty about the information provided. Interested parties must rely solely on their own enquiries.

LJ Hooker Thornlie | Canning Vale
(08) 9459 7788

Disclaimer: All information contained therein is gathered from relevant third parties sources. We cannot guarantee or give any warranty about the information provided. Interested parties must rely solely on their own enquiries.

More About this Property

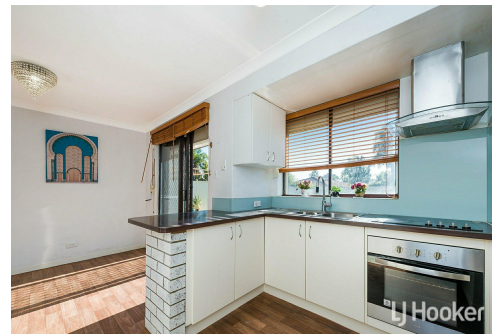
Property ID	8UAHA2
Property Type	House
Including	Workshop

Louise Frisina 0433 322 980

Director & Property Manager | louise.frisina@ljhooker.com.au

LJ Hooker Thornlie | Canning Vale (08) 9459 7788

Shop 26 Thornlie Square Shopping Centre, Spencer Road, THORNIE WA 6108
thornlie.ljhooker.com.au | thornlie@ljhooker.com.au



Disclaimer: All information contained therein is gathered from relevant third parties sources. We cannot guarantee or give any warranty about the information provided. Interested parties must rely solely on their own enquiries.

LJ Hooker Thornlie | Canning Vale
(08) 9459 7788