

47/35-39 Dumaresq Street, Gordon

1 1 1

North Facing Courtyard Apartment Home

Setting at the ground floor facing North in the full brick complex, this modern apartment is only a few minutes walk to the centre of Gordon village, shops, and train station. It has a courtyard and paved alfresco.

- Only approx. 700m to Gordon Train Station, 400m to buses and shops
- Spectacular open plan living and dining with access to the courtyard
- Well positioned generously sized bedroom complete with built in wardrobes
- Kitchen with stone top benches, gas cook top and stainless steel appliances
- Modern bathrooms with stone top vanity, shower plus bath tub
- Ducted air conditioning, video intercom and security car space
- Total area 106sqm on title: (internal size:90sqm+ cars space:13sqm +storage:3sqm)

FOR RENT
\$680 per week

VIEW

Wed 17th Jun @ 12:45PM - 1:00PM

AGENTS

Kenny Gong
0456 887 000
kgong@ljhookergordon.com.au

AGENCY

LJ Hooker Gordon
(02) 9496 8000

DISCLAIMER: All information contained herein is gathered from sources that we believe reliable. We have no reason to doubt its accuracy, however we cannot guarantee it. This information is not to be used in formalising any decision nor used by a third party without

All information contained therein is gathered from relevant third parties sources. We cannot guarantee or give any warranty about the information provided. Interested parties must rely solely on their own enquiries.

LJ Hooker

the expressed written permission of LJ Hooker Gordon.

MORE DETAILS

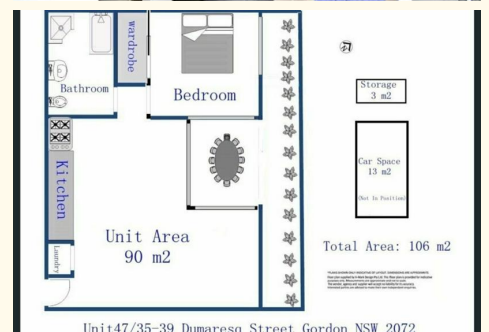
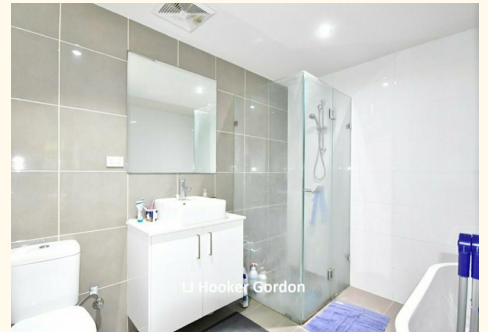
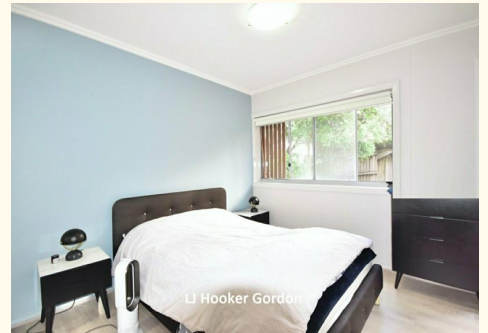
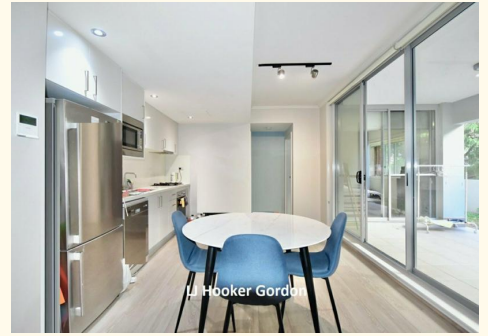
Property ID SB1HJX
Property Type Apartment

Kenny Gong 0456 887 000

Managing Director | Sales Executive | kgong@ljhookergordon.com.au

LJ Hooker Gordon (02) 9496 8000

Shop 1, 777-779 Pacific Highway, GORDON NSW 2072
gordon.ljhooker.com.au | reception@ljhookergordon.com.au



All information contained therein is gathered from relevant third parties sources.
We cannot guarantee or give any warranty about the information provided.
Interested parties must rely solely on their own enquiries.