

Gordon, 29/2 Yarabah Ave

So Spacious - walk to Train and Schools

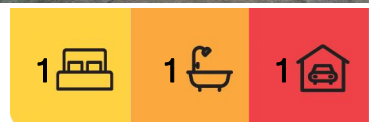
Set in the centre of Gordon, this modern apartment is featured with both tranquility and convenience including an extra spacious layout with a beautiful outlook over an expansive balcony. Ideally located to enjoy the best of the North Shore, with a short stroll to Gordon station, buses, Raverswood School, and other elite schools.

- * Spacious open plan living/dining with high ceilings
- * Open plan kitchen with stone bench top and gas cooking
- * Bedrooms with build-in wardrobes
- * Oversized balcony with accesses from both living room and bedroom
- * Ducted reverse cycle air-conditioning
- * Secure car space
- * Internal laundry

DISCLAIMER: All information contained herein is gathered from sources that we believe



Disclaimer: All information contained therein is gathered from relevant third parties sources. We cannot guarantee or give any warranty about the information provided. Interested parties must rely solely on their own enquiries.



For Lease
Please Call

View
ljhooker.com.au/6FPHJX

Contact
Kenny Gong
0456 887 000
kgong@ljhookergordon.com.au

LJ Hooker Gordon
(02) 9496 8000

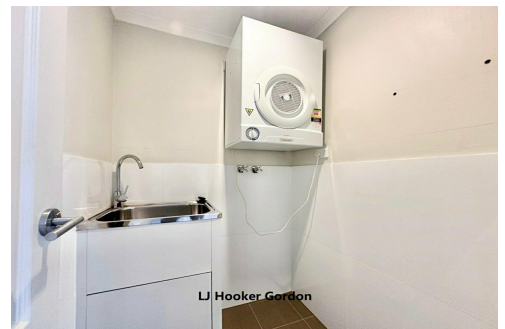
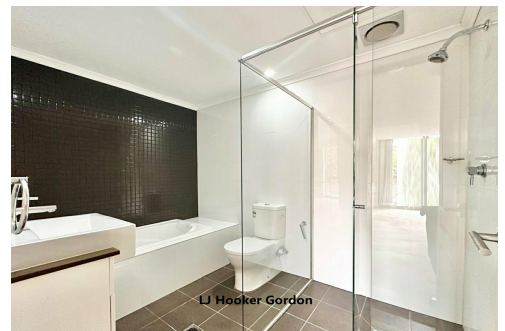
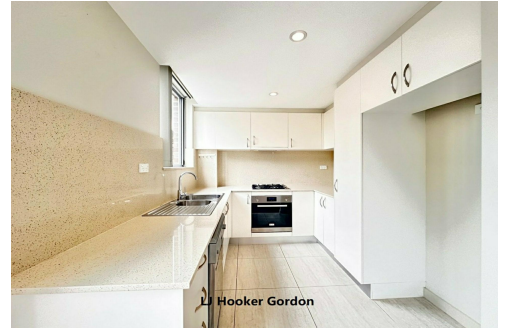
reliable. We have no reason to doubt its accuracy, however we cannot guarantee it. This information is not to be used in formalising any decision nor used by a third party without the expressed written permission of LJ Hooker Gordon.

More About this Property

Property ID	6FPHJX
Property Type	Apartment

Kenny Gong 0456 887 000
Managing Director | Sales Executive | kgong@ljhookergordon.com.au

LJ Hooker Gordon (02) 9496 8000
Shop 1, 777-779 Pacific Highway, GORDON NSW 2072
gordon.ljhooker.com.au | reception@ljhookergordon.com.au



Disclaimer: All information contained therein is gathered from relevant third parties sources. We cannot guarantee or give any warranty about the information provided. Interested parties must rely solely on their own enquiries.

LJ Hooker Gordon
(02) 9496 8000