

Goodna, 164 Stuart Street

MOVE IN READY ON STUART STREET

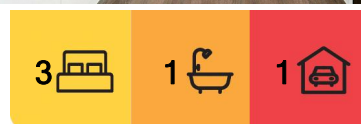
Renovated with style in mind, 164 Stuart Street is ready for its next tenant to call it home.

As you enter the home, you are greeted by an air-conditioned, living and dining space with direct access to the kitchen at the heart of the home.

The modern kitchen has been tastefully renovated with a black and white palette, offering an upright gas cooktop, oven, breakfast bench, and ample bench and cupboard space for the cook of the home to enjoy. The internal laundry is located on the back wall of the kitchen, with taps for your washing machine and storage.

Down the hall there are three generous sized bedrooms on offer, all with ceiling fans and main bedroom with air-conditioning.

Back outside the home, there is a single carport and space to park an additional car in the



For Lease
\$540 per week

View
By Appointment

Contact
Josephine Elvin
0457 000 897
joey.elvin@ljhookerproperty.com.au



Disclaimer: All information contained therein is gathered from relevant third parties sources. We cannot guarantee or give any warranty about the information provided. Interested parties must rely solely on their own enquiries.

LJ Hooker Annerley | Yeronga |
Salisbury
(07) 3848 7369

driveway. For entertaining, there is a concreted patio with shade sail overhead, a perfect spot for an afternoon BBQ or family gathering.

The property is conveniently located only a 30-minute drive to Brisbane City, a short drive to the Orion Shopping precinct and Redbank Plaza and a quick commute to Ipswich City. For families, there are plenty of sporting complexes and school options in the local area including Westside Christian College, Western Spirit Football club and Redbank Park Sports Complex.

Features of 164 Stuart Street at a glance:

- Air-conditioned living & dining space
- Modern kitchen with a black & white palette, upright gas cooktop, oven, breakfast bench, and ample bench & cupboard space
- Internal laundry located in the kitchen
- 3 bedrooms with ceiling fans
- Main bedroom with air-conditioning
- Single carport
- Concreted patio with shade sail
- 30 minutes from the Brisbane CBD
- A short drive to the Orion Shopping precinct, Redbank Plaza & Ipswich CBD
- Close proximity to sporting complexes and school options in the local area including Westside Christian College, Western Spirit Football club & Redbank Park Sports Complex
- Within the Goodna State Primary School catchment
- Within the Bellbird Park State Secondary College catchment

BOOK AN INSPECTION ONLINE - ITS EASY!

Click on the · Book Inspection· or · Request an Inspection· Button under the open for inspections times

· · · By registering for an inspection, you will be INSTANTLY informed of any updates, changes or cancellations for your property appointment. If no one registers for an inspection time - then that inspection may not proceed. If there are no times set for this property yet, STILL REGISTER and as soon as times are set, you will be advised of the day and time · · · ·

TO APPLY for this rental property please go direct to our website (below) or contact our office on 07 3848 7369. <https://annerleyyeronga.ljhooker.com.au/search/property-for-rent/page-1>

Disclaimer: Whilst every care is taken in the preparation of the information contained herein, we will not be held liable for any errors in typing or information. All information is considered correct at the time of writing and any interested parties should satisfy themselves in this respect.



Disclaimer: All information contained therein is gathered from relevant third parties sources. We cannot guarantee or give any warranty about the information provided. Interested parties must rely solely on their own enquiries.

**LJ Hooker Annerley | Yeronga |
Salisbury
(07) 3848 7369**

More About this Property

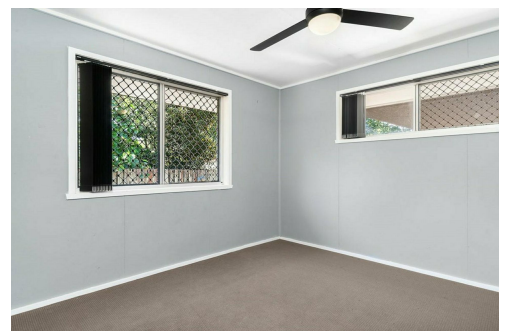
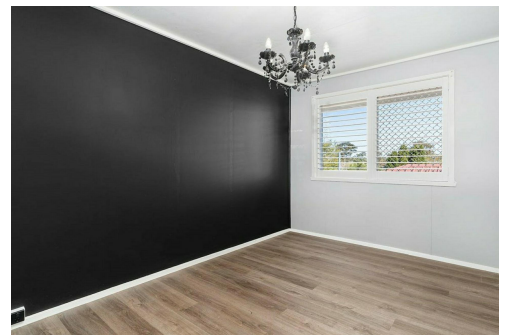
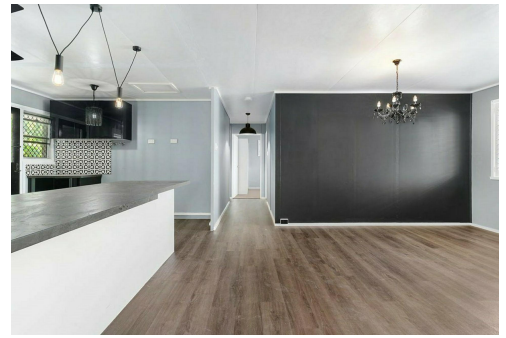
Property ID	1E7KH31
Property Type	House
Land Area	607 sqm
Including	Air Conditioning Fully Fenced

Josephine Elvin 0457 000 897

Property Manager & New Business Manager | Sales Associate to Jane Elvin |
joey.elvin@ljhookerproperty.com.au

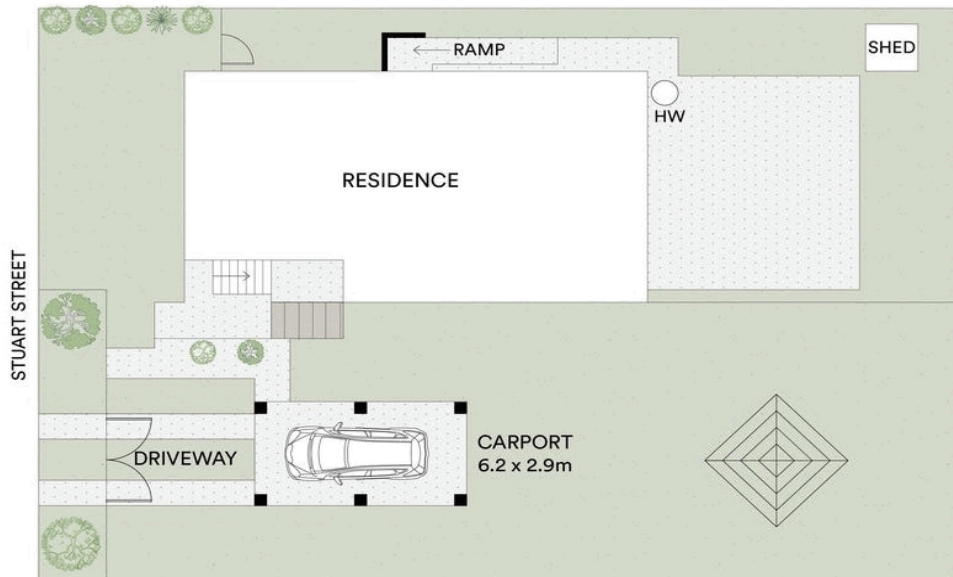
LJ Hooker Annerley | Yeronga | Salisbury (07) 3848 7369

443 Ipswich Road, ANNERLEY QLD 4103
annerleyyeronga.ljhooker.com.au | admin@ljhookerproperty.com.au



Disclaimer: All information contained therein is gathered from relevant third parties sources.
We cannot guarantee or give any warranty about the information provided. Interested parties must rely solely on their own enquiries.

**LJ Hooker Annerley | Yeronga |
Salisbury
(07) 3848 7369**



All information contained in this document is from sources we believe to be accurate, however we cannot guarantee its accuracy. Interested persons should make and rely on their own enquiries in relation to measurements, dimensions, layout, furniture and descriptions.

LAND SIZE :607 M²