

20 Maher Place, Gleneagle

Brand New - Practical, Modern & Low Maintenance

Welcome to 20 Maher Place, Gleneagle - available for the first time is two brand new, 3 bedroom residences boasting modern low maintenance living and a functional single level.


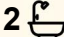

The layout and design will cater to a variety of households - the kitchen and living areas create the heart of the home and flow seamlessly out to the alfresco and yard.

Each Unit Features -

- Three bedrooms
- Two bathrooms including ensuites
- Open plan meals and living zones
- Well appointed kitchen with stone bench tops, stainless steel appliances including dishwashers
- Air conditioning to main bedroom and living zones
- Separate laundry
- Fully fenced yards with grassed areas
- Tiled alfresco areas
- Double remote controlled garage

Are you currently interstate? Not available during business hours to attend inspections? Please get in touch with our team, we are more

All information contained therein is gathered from relevant third parties sources. We cannot guarantee or give any warranty about the information provided. Interested parties must rely solely on their own enquiries.

3  2  2 

FOR RENT

Please Call

AGENTS

Tash Connors

0447 359 411

nconnors@ljhcomplete.com.au

AGENCY

LJ Hooker Property Complete

1300 360 388

 **LJ Hooker**

than happy to accommodate virtual viewings.

Disclaimer: We have in preparing this information used our best endeavors to ensure that the information contained herein is true and accurate, but accept no responsibility and disclaim all liability in respect of any errors, omissions, inaccuracies or misstatements that may occur. Prospective tenants should make their own enquiries to verify information relating to this property, the suitability with regards to internet / phone providers and/or local council requirements with regards to parking and/or pets.

Disclaimer:

Property images may have been digitally altered or staged for marketing purposes and may not constitute a complete representation of the property condition being purchased. Any photographs used by LJ Hooker may only show certain aspects of the property at the time the photographs are taken and any prospective buyer should inspect the property.

MORE DETAILS

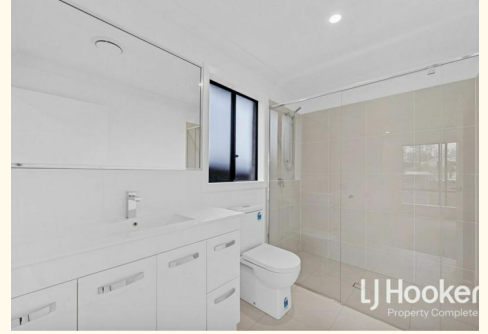
Property ID	21DUHGS
Property Type	DuplexSemi-detached
Including	Ensuite Air Conditioning Toilets (2) Dishwasher Built-in-Robes Secure Parking Fully Fenced Remote Garage

Tash Connors 0447 359 411

Head of Strategic Growth & Property Management |
nconnors@ljhcomplete.com.au

LJ Hooker Property Complete 1300 360 388

Level 1, 32 Everglade Street, YARRABILBA QLD 4207
propertycomplete.ljhooker.com.au | admin@ljhcomplete.com.au



20 Maher Place, Gleneagle



This floor plan including furniture, fixture measurements and dimensions are approximate and for illustrative purposes only. BoxBrownie.com gives no guarantee, warranty or representation as to the accuracy and layout. All enquiries must be directed to the agent, vendor or party representing this floor plan.

