

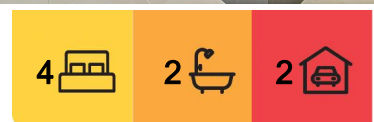
Gillieston Heights, 44 Camelia Street

"Spacious Family Home"

This remarkable near new family home offers all the essential features for a comfortable and luxurious lifestyle. The owners have not skipped a beat with this design offering premium inclusions throughout.

Step inside and be greeted by four well-appointed carpeted bedrooms. The master bedroom is complete with walk-in robe, plantation shutters, and a private ensuite. The remaining bedrooms feature built-in robes, ensuring ample storage space for everyone.

The house showcases a generously sized carpeted lounge room, perfect for unwinding and relaxing after a long day at work. At the rear of the property, you have a tiled family room and an open-plan tiled living/dining area, both equipped with glass sliding doors that lead out to an undercover alfresco area. This seamless indoor-outdoor flow creates an ideal space for entertaining family and friends.



For Lease
Please Call

View
ljhooker.com.au/1DDCF6H

Contact
Kevin Yarrington
0432 633 257
kyarrington.maitland@ljhooker.com.au



Disclaimer: All information contained therein is gathered from relevant third parties sources. We cannot guarantee or give any warranty about the information provided. Interested parties must rely solely on their own enquiries.

LJ Hooker Maitland
(02) 4933 5511

In addition, this home offers a separate tiled children's activity area or the option to utilise it as a home office, providing flexibility to adapt the space to your specific needs.

The modern kitchen is a MasterChef's dream, featuring gas cooking, stainless steel appliances, and a dishwasher. With ample cupboard and bench space, along with a separate butler's pantry, you'll have all the room you need to prepare delicious meals for your loved ones.

The main bathroom is conveniently located and offers a separate shower, bath, and toilet, ensuring convenience for the entire family.

Additional features of this home include ducted air-conditioning throughout, and a gas bayonet for added warmth during the cooler months creating the year-round comfort you have been looking for.

Outside, you'll find a low-maintenance fully fenced yard, perfect for children and pets to play safely. The double garage has an automatic door and internal access, which provides secure parking for your vehicles.

Conveniently situated near the Gillieston Heights Shopping Complex, you'll have easy access to all your daily needs. The property also offers convenient access to Maitland CBD and the Hunter Expressway, ensuring a hassle-free commute.

*Pets may be considered upon application

*Photos not to be relied upon

Disclaimer: The photos indicating the condition of the advertised property may or may not be an exact reflection of the current condition of the property. If you have any concerns, please contact the office to confirm this prior to any inspection.

More About this Property

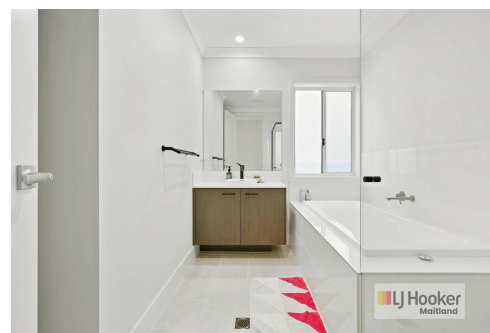
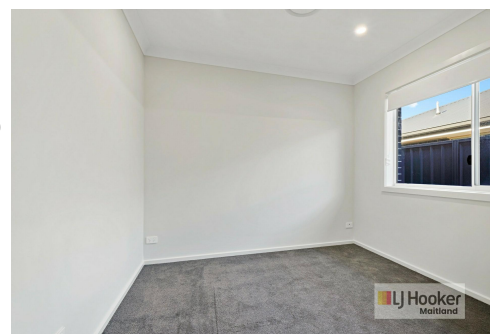
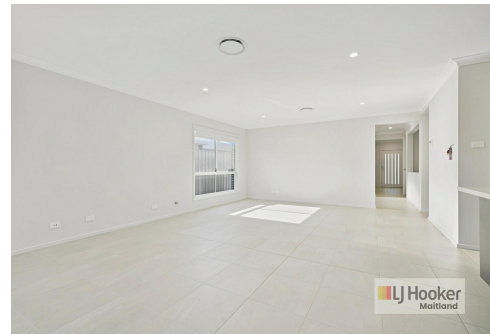
Property ID	1DDCF6H
Property Type	House
Including	Ensuite Air Conditioning Built-in-Robes Carpeted Close to Schools Close to Shops Close to Transport

Kevin Yarrington 0432 633 257
Property Investment Manager | kyarrington@maitland@ljhooker.com.au

LJ Hooker Maitland (02) 4933 5511
24 Ken Tubman Drive, MAITLAND NSW 2320
maitland@ljhooker.com.au | maitland@ljhooker.com.au



Disclaimer: All information contained therein is gathered from relevant third parties sources. We cannot guarantee or give any warranty about the information provided. Interested parties must rely solely on their own enquiries.



LJ Hooker Maitland
(02) 4933 5511