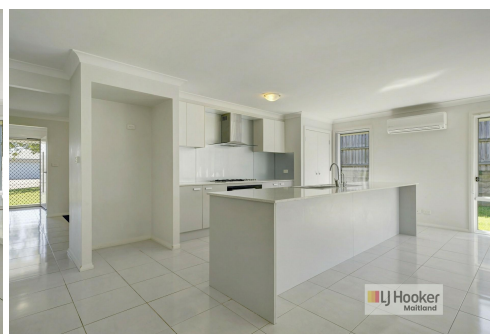


Application Pending

LEASED



Gillieston Heights, 25 Scenic Drive

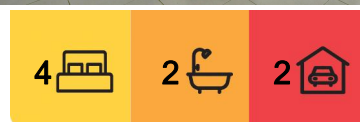
"Spacious Family Home"

Enjoying this property is easy, in the highly sought after suburb of Gillieston Heights. This modern family home offers a fantastic floor plan to maximize space, natural light and functionality.

Light, bright & airy, this home comprises of four generous sized bedrooms all with built-in wardrobes, the main bedroom has a walk in-robe, ceiling fan and ensuite.

The family bathroom is centrally located between the bedrooms, offering separate shower and deep bath for those relaxing nights at home. As you walk down the tiled hallway you are greeted with a spacious, carpeted lounge room and a large open plan tiled living, dining & kitchen area with air-conditioning & gas connection creating year round comfort.

For the MasterChef of the house, you will be impressed with this ultra modern kitchen including glass splashback, gas cooking, dishwasher, stainless steel appliances & loads of



For Lease
Please Call

View
ljhooker.com.au/1DFGF6H

Contact
Kevin Yarrington
0432 633 257
kyarrington.maitland@ljhooker.com.au



LJ Hooker Maitland
(02) 4933 5511

Disclaimer: All information contained therein is gathered from relevant third parties sources. We cannot guarantee or give any warranty about the information provided. Interested parties must rely solely on their own enquiries.

cupboard and bench space.

If you love entertaining, then you'll enjoy the outdoor undercover alfresco area which overlooks a good size, fully fenced, low maintenance yard with side access. Another great feature this property has to offer is a double garage with auto door and internal access.

The property is in a super convenient location which allows easy access to Maitland CBD & Hunter Expressway

* Please note - the only online applications we accept are via Ignite on realestate.com. Applications will only be processed once the property has been viewed in person at our scheduled open homes

* Photos not to be relied upon

Disclaimer: The photos indicating the condition of the advertised property may or may not be an exact reflection of the current condition of the property. If you have any concerns please contact the office to confirm this prior to any inspection.

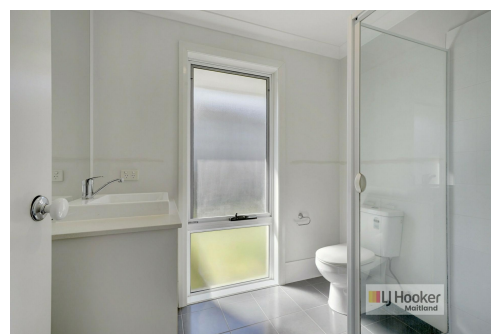
All information contained herein is gathered from sources we deem to be reliable. However, we cannot guarantee its accuracy and interested persons should rely on their own enquiries.

More About this Property

Property ID	1DFGF6H
Property Type	House
Including	Air Conditioning Built-in-Robes

Kevin Yarrington 0432 633 257
Property Investment Manager | kyarrington@maitland@ljhooker.com.au

LJ Hooker Maitland (02) 4933 5511
24 Ken Tubman Drive, MAITLAND NSW 2320
maitland.ljhooker.com.au | maitland@ljhooker.com.au



Disclaimer: All information contained therein is gathered from relevant third parties sources. We cannot guarantee or give any warranty about the information provided. Interested parties must rely solely on their own enquiries.

LJ Hooker Maitland
(02) 4933 5511