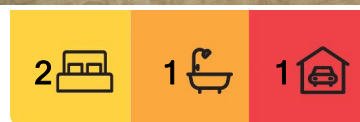


Gillieston Heights, 2/1 Lavender Close

WHAT A LITTLE GEM!!

- * Low maintenance 2 bedroom home
- * Both bedrooms with built-in robes & ceiling fans
- * Carpeted living area
- * Modern kitchen with dishwasher
- * Built in laundry
- * Three way bathroom
- * Single remote garage
- * Fully fenced rear yard
- ** Photos not to be relied upon



For Lease
\$470 pw

View
By Appointment

Contact
Haylee Williams
maitland@ljhooker.com.au

Disclaimer: The photos indicating the condition of the advertised property may or may not be an exact reflection of the current condition of the property. If you have any concerns please contact the office to confirm this prior to any inspection.



Disclaimer: All information contained therein is gathered from relevant third parties sources. We cannot guarantee or give any warranty about the information provided. Interested parties must rely solely on their own enquiries.

LJ Hooker Maitland
(02) 4933 5511

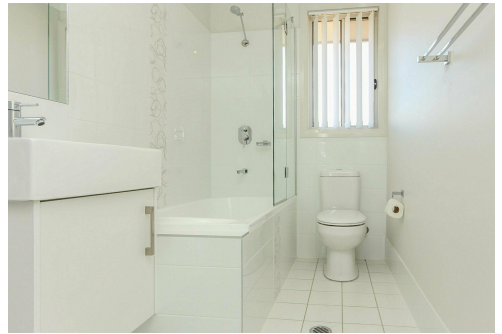
All information contained herein is gathered from sources we deem to be reliable.
However, we cannot guarantee its accuracy and interested persons should rely on their own enquiries.

More About this Property

Property ID	1EAEF6H
Property Type	House

Haylee Williams
Property Investment Manager | maitland@ljhooker.com.au

LJ Hooker Maitland (02) 4933 5511
24 Ken Tubman Drive, MAITLAND NSW 2320
maitland.ljhooker.com.au | maitland@ljhooker.com.au



Disclaimer: All information contained therein is gathered from relevant third parties sources.
We cannot guarantee or give any warranty about the information provided. Interested parties must rely solely on their own enquiries.

LJ Hooker Maitland
(02) 4933 5511