

1 Hislop Street, Geraldine




Listen to the Bellbirds

Be the first to live in this smart, architecturally designed townhouse! On the edge of town but still an easy walk to the cafes, you have native bush at your doorstep and the song of the bellbird to enjoy.

Three double bedrooms (which includes a master with walk-in wardrobe, plus an ensuite). The open plan kitchen has a smart kitchen, fantastic lighting and good flow to the outdoors. The patio area will be put to good use as it's sheltered and has a private outlook.

Double car garaging, an easy care section and the luxury of a modern home is a rarity in town. This property is ideal for busy professionals, you can lock up and leave on your days off and enjoy exploring what the region has to offer. Sorry, no pets.

To book a viewing or to apply, please go to:
<https://apply.tenant.co.nz/6475069>

3  2  2 

FOR RENT

Please Call

AGENTS

Chantel Johnston
027 331 1799
chantel.timaru@ljhooker.co.nz

AGENCY

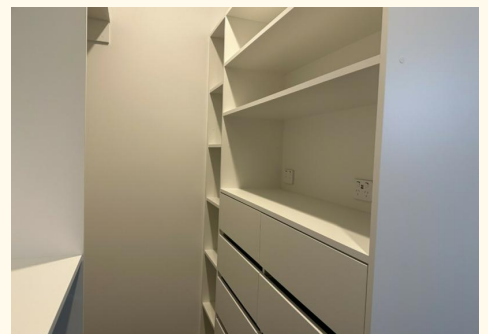
LJ Hooker Timaru
(03) 688 3029
Enting Real Estate Limited

MORE DETAILS

Property ID 15A3GTA
Property Type Townhouse
Licensed Real Estate Agents (REAA2008)

Chantel Johnston 027 331 1799
Property Manager | chantel.timaru@ljhooker.co.nz

LJ Hooker Timaru (03) 688 3029
Enting Real Estate Limited
51 Church Street, TIMARU 7910
timaru.ljhooker.co.nz | timaru@ljhooker.co.nz



All information contained therein is gathered from relevant third parties sources.
We cannot guarantee or give any warranty about the information provided.
Interested parties must rely solely on their own enquiries.