



## Geraldine

### Great Family Living

This large family home is waiting for the next family to enjoy its spaciousness both inside and out.

The heart of the home is the kitchen, dining area and adjoining lounge that offers plenty of space. The large sunroom offers additional living space where you can escape to read a book or set up th lego and soak up the sun.

Large main bedroom with wardrobes, second bedroom has adjoining rooms, ideal for a study or a dressng room or bedrooms.

A double garage along with a variety of sheds, provide good storage and raised vegetable plots will make the gardening easier.

The section is awesome for the family to play and has a large variety of fruit trees.

To book a viewing, or apply online, copy the following link into your internet browser:



**Disclaimer:** All information contained therein is gathered from relevant third parties sources. We cannot guarantee or give any warranty about the information provided. Interested parties must rely solely on their own enquiries.

4

1

0

**For Lease**  
Please Call

**View**  
[ljhooker.co.nz/15D4GTA](https://ljhooker.co.nz/15D4GTA)

**Contact**  
**Chantel Johnston**  
027 331 1799  
[chantel.timaru@ljhooker.co.nz](mailto:chantel.timaru@ljhooker.co.nz)

**LJ Hooker Timaru**  
**(03) 688 3029**  
Enting Real Estate Limited



<https://apply.tenant.co.nz/6493141>

## More About this Property

**Property ID** 15D4GTA

**Property Type** House

**Licensed Real Estate Agents (REAA2008)**

**Chantel Johnston 027 331 1799**

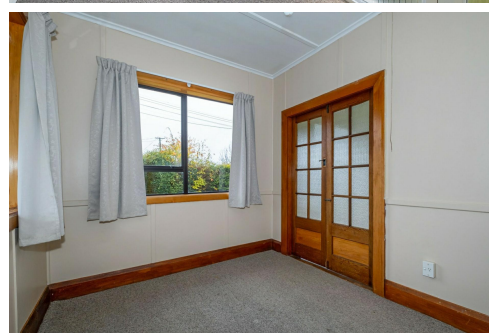
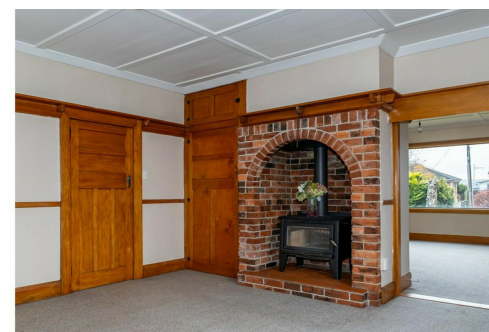
Property Manager | [chantel.timaru@ljhooker.co.nz](mailto:chantel.timaru@ljhooker.co.nz)

**LJ Hooker Timaru (03) 688 3029**

Enting Real Estate Limited

51 Church Street, TIMARU 7910

[timaru.ljhooker.co.nz](mailto:timaru.ljhooker.co.nz) | [timaru@ljhooker.co.nz](mailto:timaru@ljhooker.co.nz)



**Disclaimer:** All information contained therein is gathered from relevant third parties sources. We cannot guarantee or give any warranty about the information provided. Interested parties must rely solely on their own enquiries.

**LJ Hooker Timaru**  
**(03) 688 3029**  
Enting Real Estate Limited