
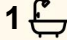



21 Honeyeater Crescent, Geographe

3  1  3 

## Minutes from Geographe Bay's sparkling waters

This well presented 3 bedroom, 1 bathroom family home is nestled in a quiet alcove on Honeyeater Crescent. Located only a short stroll from the sparkling waters of Geographe Bay, and minutes from Busselton town centre, this home is the perfect choice for families or anyone looking to enjoy the best of coastal living.

### Property Features:

- Large open plan lounge and dining area with stylish wood look flooring
- Spacious main bedroom with walk-in robe and semi-ensuite
- Two additional bedrooms with built in robes
- Modern kitchen with gas cooktop and electric oven
- Easy care yard with lawns, reticulation, and a handy tool shed
- Undercover outdoor entertaining area

### TO INSPECT THIS PROPERTY

Click the Book an inspection time button, enter your details, and choose an available appointment. If no times are listed, you'll be notified once a viewing has been scheduled.

For further information regarding this property, please call Hannah Munro on (08) 9791 6880.

### FOR RENT

Please Call

### AGENTS

Dayle Dean

pm.busselton@ljhsouthwest.com.au

### AGENCY

LJ Hooker Property South West WA  
(08) 9791 6880

All information contained therein is gathered from relevant third parties sources.  
We cannot guarantee or give any warranty about the information provided.  
Interested parties must rely solely on their own enquiries.



## MORE DETAILS

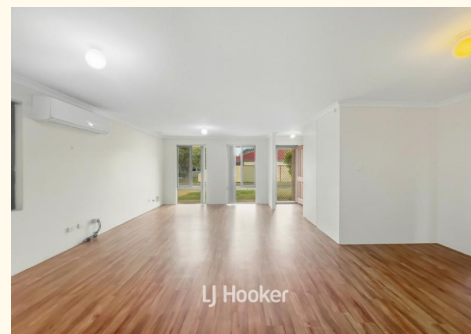
Property ID 18SQHND  
Property Type House  
Including Air Conditioning  
Toilets (1)  
Built-in-Robes  
Fully Fenced

### Dayle Dean

Property Manager " Busselton |  
pm.busselton@ljhsouthwest.com.au

### LJ Hooker Property South West WA (08) 9791 6880

130 Victoria Street, BUNBURY WA 6230  
southwestwa.ljhooker.com.au | bunbury@ljhsouthwest.com.au



All information contained therein is gathered from relevant third parties sources.  
We cannot guarantee or give any warranty about the information provided.  
Interested parties must rely solely on their own enquiries.