



56/75 Elizabeth Jolley Crescent, Franklin

North Facing Apartment Modern Apartment



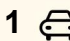
Welcome to Mosaic, an exclusive residential experience that captures the essence of urban sophistication in the vibrant heart of Gungahlin. This elegantly designed apartment seamlessly blends style and functionality, making it the perfect retreat for those who appreciate the finer things in life.

The apartment's open plan layout integrates the living, dining, and kitchen spaces, offering a generous and inviting environment. Bathed in natural light, the north facing balcony serves as an escape, showcasing views to the main Flemington Road.

The kitchen is equipped with top tier Omega appliances, including a sleek electric cooktop, dishwasher, and deluxe stone benchtops. The living areas are further enhanced with sophisticated hybrid flooring, complemented by fresh paint and modern blinds, ensuring a refined and contemporary atmosphere.

Features include:

- Apartment on level 1
- Open plan living, dining and kitchen
- Upgraded floors

1  1  1 

FOR RENT

Please Call

AGENTS

Sim Kaur

0474 772 081

sim.kaur@ljhcanberracity.com.au

AGENCY

LJ Hooker Canberra City

(02) 6249 7700

All information contained therein is gathered from relevant third parties sources. We cannot guarantee or give any warranty about the information provided. Interested parties must rely solely on their own enquiries.

 **LJ Hooker**

- Freshly painted
 - Split system heating and cooling
 - Spacious bedroom with built-in robe with plenty of storage
 - North facing balcony
 - Electric cooktop
 - Single car space with storage cage
- No current EER

This property has a valid exemption and is not required to comply with the minimum ceiling insulation standard.

Suburb Snapshot

Franklin is a suburb of Canberra, Australia in the district of Gungahlin. It is named after the novelist Miles Franklin. The streets in Franklin are named after writers. It comprises an area of approximately 256 hectares. It is bounded by Flemington Road to the north and east, Wells Station Drive to the south, and Gungahlin Drive to the west.

Disclaimer:

Please note that while all care has been taken regarding general information and marketing information compiled for this rental advertisement, LJ HOOKER CANBERRA CITY does not accept responsibility and disclaim all liabilities in regard to any errors or inaccuracies contained herein. We encourage prospective tenants to rely on their own investigation and in-person inspections to ensure this property meets their individual needs and circumstances.

PETS:

Please be aware that at all stages of tenancy this property requires consent to be sought from the lessor for the keeping of any pets at the premises. Consent must be provided before any pets are at the premises.

RENTING BOOK:

https://www.justice.act.gov.au/data/assets/pdf_file/0008/2443472/Renting-Book-May-2024.pdf

MORE DETAILS

Property ID	2EC7FHK
Property Type	Apartment
EER	6
Including	Air Conditioning Intercom Balcony Dishwasher Built-in-Robes

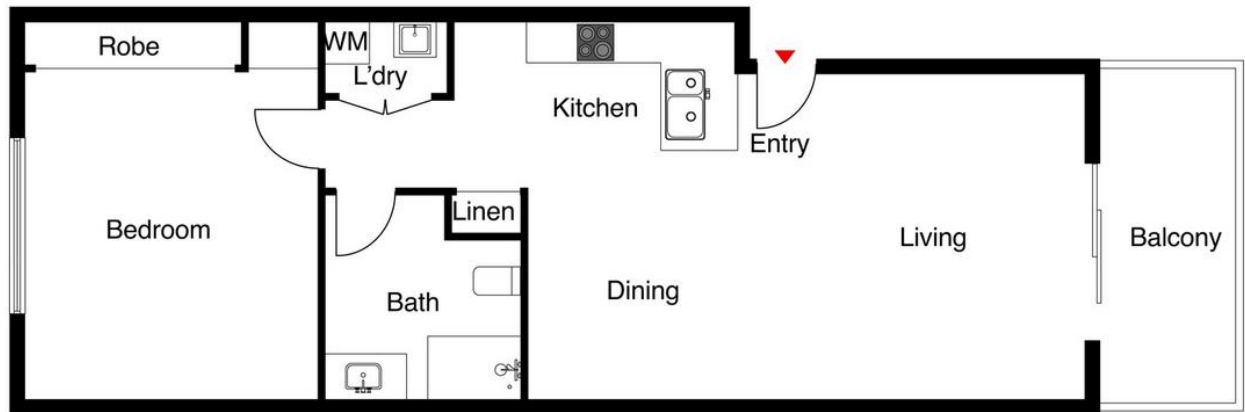
Sim Kaur 0474 772 081

Property Investment Manager | sim.kaur@ljhcanberracity.com.au

LJ Hooker Canberra City (02) 6249 7700

1st Floor, 182 - 200 City Walk, CANBERRA CITY ACT 2601
canberracity.ljhooker.com.au | canberracity@ljhooker.com.au





The site plan and area not to scale; measurements are indicative and in metres. Bushes and trees are placed for illustration purposes. Plans should not be relied on. Interested parties should make and rely on their own enquiries



All information contained therein is gathered from relevant third parties sources.
We cannot guarantee or give any warranty about the information provided.
Interested parties must rely solely on their own enquiries.

