

## Firle, 1/5 John Street

### Executive Townhouse in Small Group

4 2 2

Perfectly located only 7.5 km from the CBD, a short stroll to Firle Plaza and minutes to the vibrancy of Norwood Parade it's all here for you to enjoy.

Features include:

- \*Open plan living, dining and kitchen with floorboards, opening to courtyard
- \*Kitchen with stainless steel appliances, 900mm gas cooktop and electric oven, dishwasher, stone benchtops and pantry
- \*Main bedroom with balcony, walk in robe and ensuite
- \*Ensuite tiled floor to ceiling with shower and toilet
- \*Bedrooms 2 & 3 with built in robes
- \*Main bathroom tiled floor to ceiling with shower, bath and toilet
- \*Downstairs study, sitting room or 4th bedroom
- \*Internal laundry
- \*Downstairs powder room

**For Lease**  
Please Call

**View**  
[ljhooker.com.au/2BF9FDZ](http://ljhooker.com.au/2BF9FDZ)

**Contact**  
**Tri Nguyen**  
0423 686 219  
[Tri.Nguyen@ljhadelaidemetro.com.au](mailto:Tri.Nguyen@ljhadelaidemetro.com.au)



**Disclaimer:** All information contained therein is gathered from relevant third parties sources. We cannot guarantee or give any warranty about the information provided. Interested parties must rely solely on their own enquiries.

**LJ Hooker St Peters**  
**(08) 8362 8008**

- \*Ducted reverse cycle air conditioner
- \*Easy care, low maintenance garden

Located at the end of John St, Firle where it only allows for one-way traffic (no through street) so that you can enjoy the tranquil and quiet neighbourhood of this beautiful green eastern suburb. Right along the third creek of Torrens River, the enviable address takes only 5-minute ride to Norwood, 15-minute to city centre and Mt Lofty.

A stone's throw away from Adey Reserve and Payneham Oval, the townhouse sits in the leading school zone of Trinity Gardens Primary School and Norwood Morialta High School. Public transport to city universities is only metres away. Surrounded by some of finest eateries, takeaway, cafes and a stunning view of Adelaide eastern hills, the place is just walking distance to Firle Plaza and Glynburn Plaza where you will love a one stop shop experience for your weekend shopping. Firle Medical Centre, Medical HQ Glynde and the vets are also in close proximity just in case you and your furry friends need someone there for you.

- Pets: Negotiable on application
- Water charges: Water supply and usage charges apply
- Furniture: Unfurnished

\*\*\* TO BOOK AN INSPECTION TIME PLEASE CLICK ON "BOOK AN INSPECTION TIME" TO SUBMIT AND SECURE YOUR BOOKING TO ATTEND ANY OF THE LISTED SCHEDULED OPEN INSPECTION. By registering, you will be INSTANTLY informed of any updates, changes or cancellations.

NOTE: In an attempt to prevent and minimise the spread of COVID-19 (Coronavirus), please do NOT attend the open inspection if you have travelled / returned from overseas in the last 14 days, or if you flu-like symptoms (including fever, coughing, wheezing or shortness of breath), or if you have been in contact with someone that has displayed any COVID19 symptoms (such as fever, coughing, wheezing or shortness of breath).

NOTE ABOUT THE OPEN INSPECTIONS: Interested persons MUST register their details to attend any of the scheduled viewing dates and times allocated. The agent will not attend the listed viewing date and time if you do not register and confirm your attendance. It is for this reason we highly recommend you register to attend to ensure the agent's attendance and to avoid disappointment.

## More About this Property

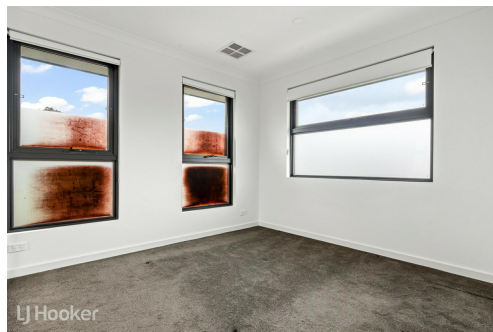
Property ID	2BF9FDZ
Property Type	Townhouse

Tri Nguyen 0423 686 219  
 Property Investment Manager | Tri.Nguyen@ljhadelaidemetro.com.au

**LJ Hooker St Peters (08) 8362 8008**  
 2a Portrush Road, PAYNEHAM SA 5070  
 stpeters.ljhooker.com.au | stpeters@ljhadelaidemetro.com.au



**Disclaimer:** All information contained therein is gathered from relevant third parties sources. We cannot guarantee or give any warranty about the information provided. Interested parties must rely solely on their own enquiries.



**LJ Hooker St Peters**  
**(08) 8362 8008**