


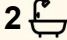



23 Font Hill Drive, Farley

"New Dual Key Build"

This lovely, dual key property features:

- 3 bedrooms, main with ensuite and WIR
- All bedrooms with ceiling fans
- Open plan kitchen, meals & living areas
- Modern kitchen with stone benchtops, s/steel appliances & dishwasher
- Ducted air conditioning throughout
- Single car garage with remote control door
- Covered outdoor entertaining area
- Fully fenced low-maintenance yard
- Photos not to be relied upon & more photos to come

3  2  1 

FOR RENT

Please Call

AGENTS

Karen McMichael
kcmichael.maitland@ljhooker.com.au

AGENCY

LJ Hooker Maitland
(02) 4933 5511

Disclaimer: The photos indicating the condition of the advertised property may or may not be an exact reflection of the current condition of the property. If you have any concerns please contact the office to confirm this prior to any inspection.

All information contained therein is gathered from relevant third parties sources.
We cannot guarantee or give any warranty about the information provided.
Interested parties must rely solely on their own enquiries.

 **LJ Hooker**

MORE DETAILS

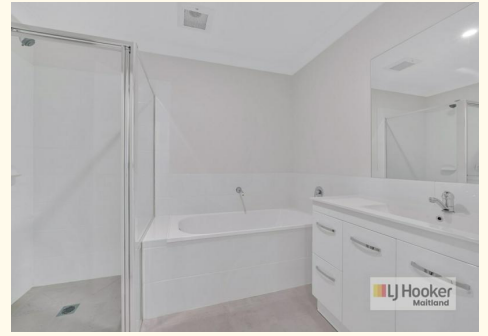
Property ID 1DZYF6H
Property Type DuplexSemi-detached
Including Ensuite
Air Conditioning
Carpeted
Close to Transport

Karen McMichael

Property Investment Manager |
kcmichael.maitland@ljhooker.com.au

LJ Hooker Maitland (02) 4933 5511

24 Ken Tubman Drive, MAITLAND NSW 2320
maitland.ljhooker.com.au | maitland@ljhooker.com.au



All information contained therein is gathered from relevant third parties sources.
We cannot guarantee or give any warranty about the information provided.
Interested parties must rely solely on their own enquiries.