



**LEASED**

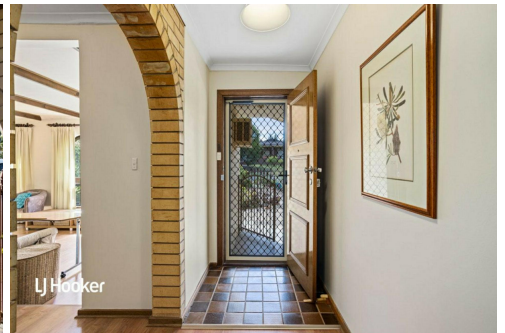
LJ Hooker



LJ Hooker



LJ Hooker



LJ Hooker

## Fairview Park, 28 Hoylake Crescent

Cosy family home!



**For Lease**

Please Call

TO REGISTER AND INSPECT THIS PROPERTY VISIT: <https://tenantoptions.com.au/>

\*\* Only applicants who have inspected the property will be considered \*\*

**View**

[ljhooker.com.au/29XZGJU](http://ljhooker.com.au/29XZGJU)

Features:

- Large master bedroom with built-in wardrobe and a/c
- Good-sized bedrooms, two and three both with built-in wardrobes
- Forth bedroom/study
- Formal lounge with gas heating
- Undercover entertaining area
- 5kw solar
- Well-maintained backyard with fruit trees and low-maintenance artificial lawn
- Undercover parking
- Close to all amenities

**Contact**

**Cheree Hunt**

0403 707 370

[chereeh@ljhpropertymanagement.com.au](mailto:chereeh@ljhpropertymanagement.com.au)



**LJ Hooker Greenwith | Golden Grove | Mawson Lakes | Modbury**  
**(08) 8289 6660**

**Disclaimer:** All information contained therein is gathered from relevant third parties sources. We cannot guarantee or give any warranty about the information provided. Interested parties must rely solely on their own enquiries.

Please contact us during office hours on 8289 6660 (Monday-Friday 9am-5.30pm) if you have any queries regarding the application process. If your queries relate to an open inspection time, please be advised that all open times are updated every Friday by close of business. If you are unable to attend the open inspection or there are no open times scheduled, please send your enquiry through this website.

RLA 208516

## More About this Property

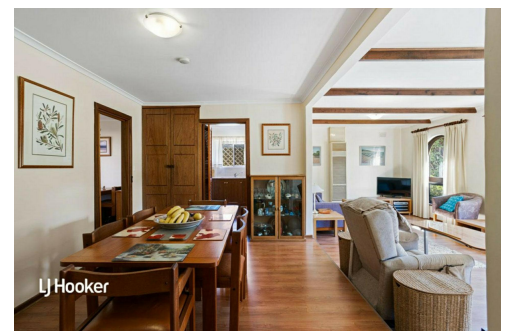
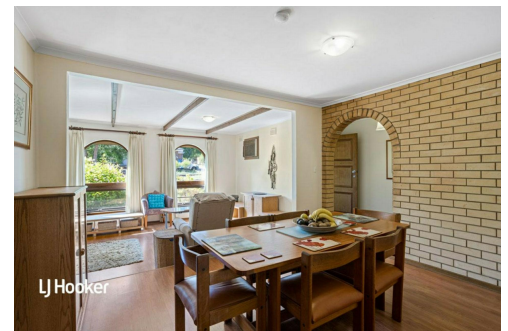
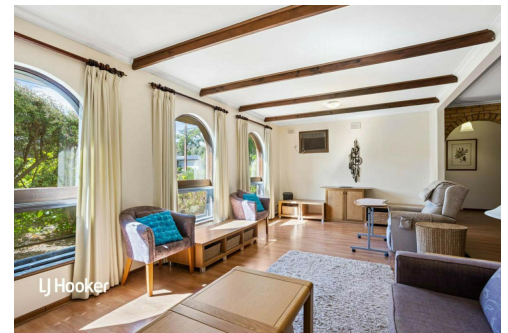
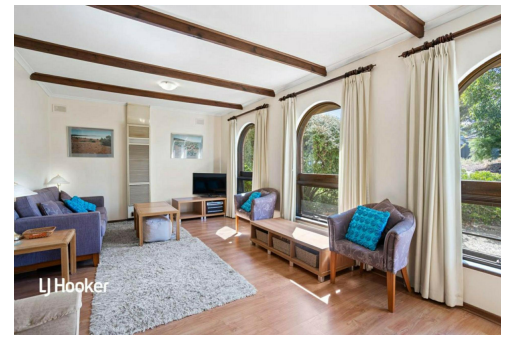
<b>Property ID</b>	29XZGJU
<b>Property Type</b>	House
<b>Land Area</b>	630 sqm
<b>Including</b>	Air Conditioning Built-in-Robes Secure Parking Solar Panels

### Cheree Hunt 0403 707 370

Property Investment Specialist |  
chereeh@ljhpropertymanagement.com.au

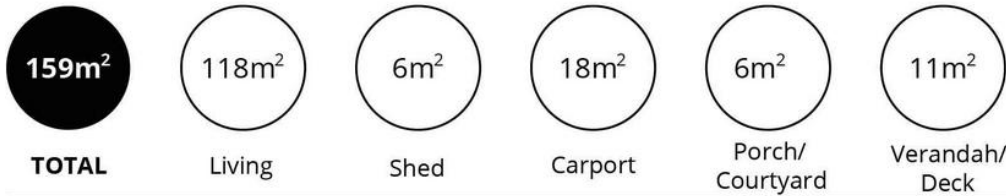
### LJ Hooker Greenwith | Golden Grove | Mawson Lakes | Modbury (08) 8289 6660

North East, Shop 2, 1007 North East Road, RIDGEHAVEN SA 5097  
greenwithgoldengrove.ljhooker.com.au | info@ljhsupport.com.au



**Disclaimer:** All information contained therein is gathered from relevant third parties sources. We cannot guarantee or give any warranty about the information provided. Interested parties must rely solely on their own enquiries.

**LJ Hooker Greenwith | Golden Grove | Mawson Lakes | Modbury (08) 8289 6660**



Scale in metres. This drawing is for illustration purposes only. All measurements are approximate and details intended to be relied upon should be independently verified.

Produced by **The Fotobase Group**



**LJ Hooker Greenwith | Golden Grove | Mawson Lakes | Modbury**  
**(08) 8289 6660**

**Disclaimer:** All information contained therein is gathered from relevant third parties sources. We cannot guarantee or give any warranty about the information provided. Interested parties must rely solely on their own enquiries.