

## Fairlie, 156 Geraldine-Fairlie Highway

Close to Fairlie

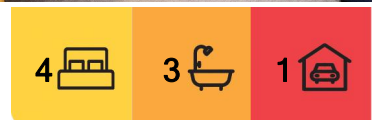
This property is just out of town and is an ideal home for the family with room to roam and play.

The home is surprisingly spacious with four bedrooms and three bathrooms, a good living area and an updated kitchen with dishwasher. A logfire and heat pump will keep you cosy in the colder times.

This property is only 1.5km from Fairlie and you have the benefits of country living with only a very short drive to town.

Total move in costs: Bond + First weeks rent = \$2,400

Date available: 09/12/23



**For Lease**  
Please Call

**View**  
[l.jhooker.co.nz/11SMGTA](https://l.jhooker.co.nz/11SMGTA)

**Contact**  
**Lesley Groundwater**  
027 222 5473  
[lesley.timaru@l.jhooker.co.nz](mailto:lesley.timaru@l.jhooker.co.nz)



**Disclaimer:** All information contained therein is gathered from relevant third parties sources. We cannot guarantee or give any warranty about the information provided. Interested parties must rely solely on their own enquiries.

**LJ Hooker Timaru**  
**(03) 688 3029**  
Enting Real Estate Limited



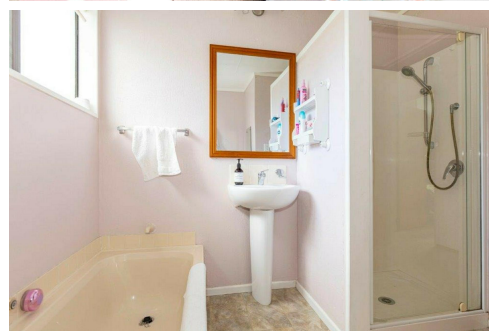
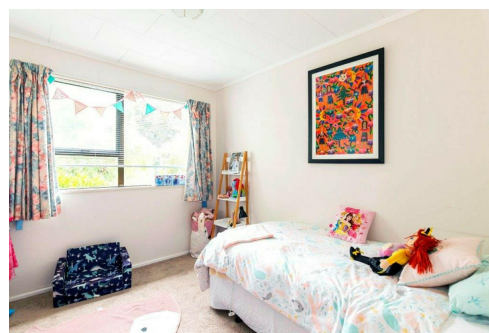
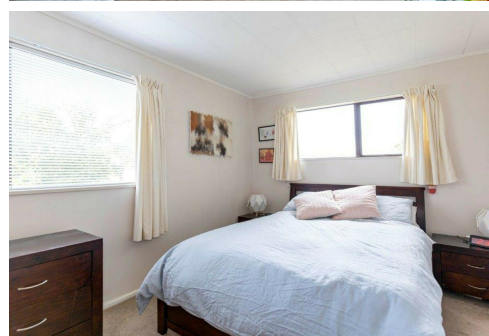
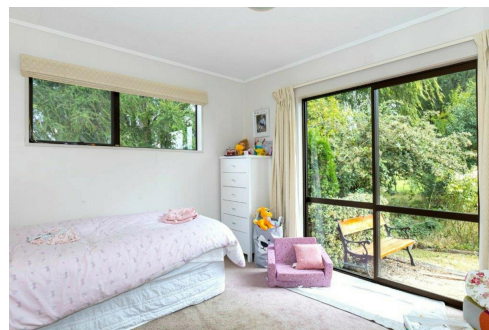
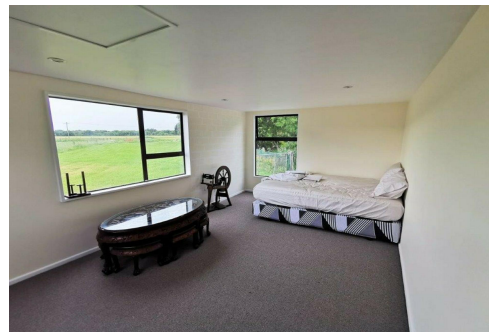
Please book to view via Trade Me or call our Property Management team to discuss on 03 688 3029.

## More About this Property

<b>Property ID</b>	11SMGTA
<b>Property Type</b>	House
<b>Licensed Real Estate Agents (REAA2008)</b>	

**Lesley Groundwater 027 222 5473**  
Consultant - Property Management | [lesley.timaru@ljhooker.co.nz](mailto:lesley.timaru@ljhooker.co.nz)

**LJ Hooker Timaru (03) 688 3029**  
Enting Real Estate Limited  
51 Church Street, TIMARU 7910  
[timaru.ljhooker.co.nz](http://timaru.ljhooker.co.nz) | [timaru@ljhooker.co.nz](mailto:timaru@ljhooker.co.nz)



**Disclaimer:** All information contained therein is gathered from relevant third parties sources.  
We cannot guarantee or give any warranty about the information provided. Interested parties must rely solely on their own enquiries.

**LJ Hooker Timaru**  
**(03) 688 3029**  
Enting Real Estate Limited