

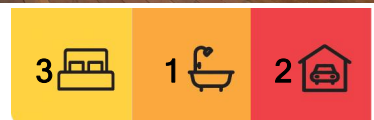
Fairfield, 33 Ashby Street

1920s QUEENSLANDER IN CONVENIENT LOCATION

You will love living in this charming 3-bedroom Queenslander, all you have to do is move in and enjoy the lifestyle and convenience of living in this highly desirable location.

The enclosed front sun room opens into the air-conditioned open plan living and dining room with plenty of room to relax whilst enjoying the lovely breezes that are created from the northern aspect. Spanning off the living and dining area sits 3 generous sized bedrooms all with ceiling fans and two with robes. The modern bathroom can be found positioned adjacent to all 3 bedrooms complete with shower, toilet and vanity. There is also a separate toilet at the rear of the home for your convenience.

At the heart of the home sits the kitchen which features new stone benchtops, 90cm gas cooktop/oven, dishwasher and double sink. From the kitchen enjoy direct access to the spacious and fully fenced backyard. To complete the package, there is a large storage area, laundry room and a tandem garage located underneath the house



For Lease
\$800 per week

View
Fri 18th Jul @ 11:00AM - 11:20AM



Disclaimer: All information contained therein is gathered from relevant third parties sources. We cannot guarantee or give any warranty about the information provided. Interested parties must rely solely on their own enquiries.

**LJ Hooker Annerley | Yeronga |
Salisbury
(07) 3848 7369**

Ideally situated, this property is within easy reach of every amenity you could need. Fairfield Shopping centre is within a few minutes' walk with a choice of local cafes and shops including Coles. Getting around is easy with public transport nearby - Fairfield station is within a short walk and a bus stop is on hand. The bikeways along the Brisbane Corso are a great way to escape from a busy lifestyle. The University of Queensland is just across the river and easily accessible via at the Green Bridge. Good local schools for all ages are plentiful including Yeronga State High School, St Sebastian's Primary School and Yeronga Hyde Road Kindergarten and Preschool.

Features of 33 Ashby Street at a glance:

- 3 bedrooms plus front sunroom
- Ceiling fans in all 3 bedrooms
- 1.5 modern bathrooms
- Updated kitchen with 90cm gas stainless steel freestanding range, dishwasher and butlers sink
- Air-conditioning in living/dining/kitchen area
- Laundry under house with large storage space
- Great back yard, big enough but not too big to manage
- Tandem garage
- Within the Yeronga State School catchment
- Walk to shops and local cafes
- Walk to train and bus
- Close to University of QLD
- Close to PA Hospital
- Only 4km to CBD

BOOK AN INSPECTION ONLINE - ITS EASY!

Click on the *Book Inspection* or *Request an Inspection* Button under the open for inspections times

*** By registering for an inspection, you will be INSTANTLY informed of any updates, changes or cancellations for your property appointment. If no one registers for an inspection time - then that inspection may not proceed. If there are no times set for this property yet, STILL REGISTER and as soon as times are set, you will be advised of the day and time ****

TO APPLY for this rental property please go direct to our website (below) or contact our office on 07 3848 7369. <https://annerleyyeronga.ljhooker.com.au/search/property-for-rent/page-1>

Disclaimer: Whilst every care is taken in the preparation of the information contained herein, we will not be held liable for any errors in typing or information. All information is considered correct at the time of writing and any interested parties should satisfy themselves in this respect.



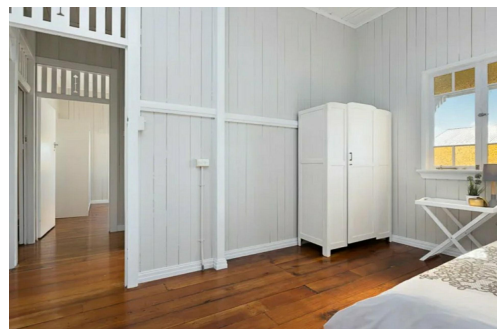
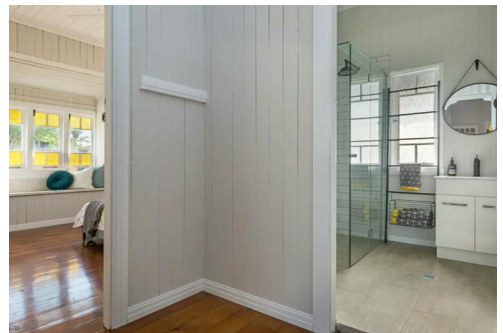
Disclaimer: All information contained therein is gathered from relevant third parties sources. We cannot guarantee or give any warranty about the information provided. Interested parties must rely solely on their own enquiries.

**LJ Hooker Annerley | Yeronga |
Salisbury
(07) 3848 7369**

More About this Property

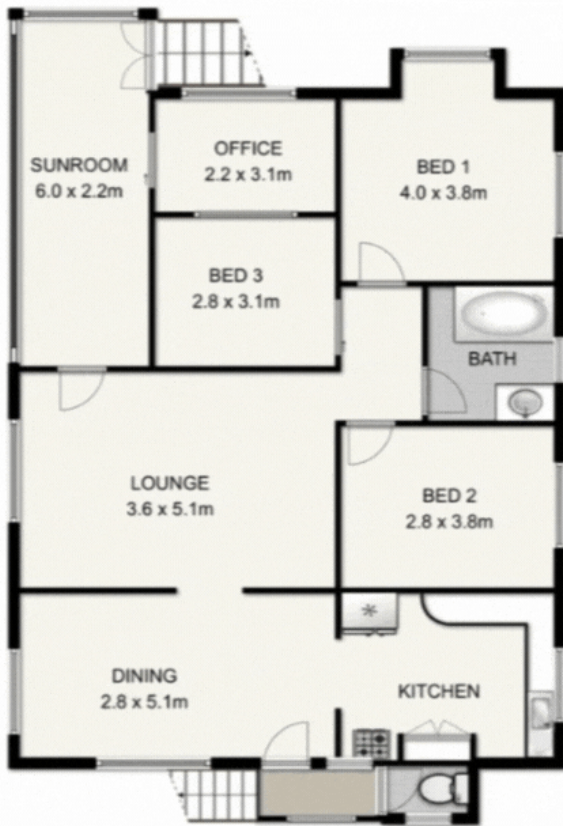
Property ID	1EYQH31
Property Type	House
Land Area	405 sqm
Including	Air Conditioning Dishwasher Floorboards Secure Parking Fully Fenced

LJ Hooker Annerley | Yeronga | Salisbury (07) 3848 7369
443 Ipswich Road, ANNERLEY QLD 4103
annerleyyeronga.ljhooker.com.au | admin@ljhookerproperty.com.au



Disclaimer: All information contained therein is gathered from relevant third parties sources.
We cannot guarantee or give any warranty about the information provided. Interested parties must rely solely on their own enquiries.

**LJ Hooker Annerley | Yeronga |
Salisbury
(07) 3848 7369**



33 ASHBY STREET, FAIRFIELD

This plan is not to scale. Areas and dimensions are approximate and therefore plan should only be used for illustrative purposes. Plants are decorative only. Floor Plan by wideangles.com.au

INT:	237 sqm
EXT:	0 sqm
TOTAL:	237 sqm